



User Setup for PWM board control with Mach3:

Open Mach3 software:

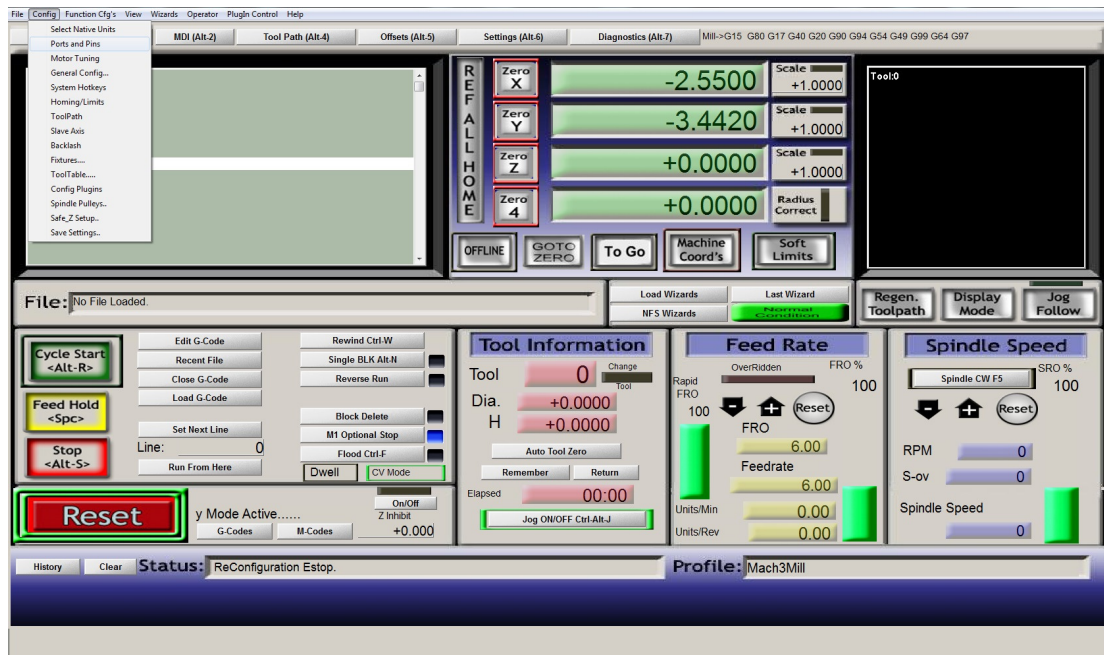


Figure 1.1

If your Spindle will be controlled with **Mach3** you have to define the connection From the dialog **Config** select the tab **Ports and Pins** as you see and the selection tab box will appear:

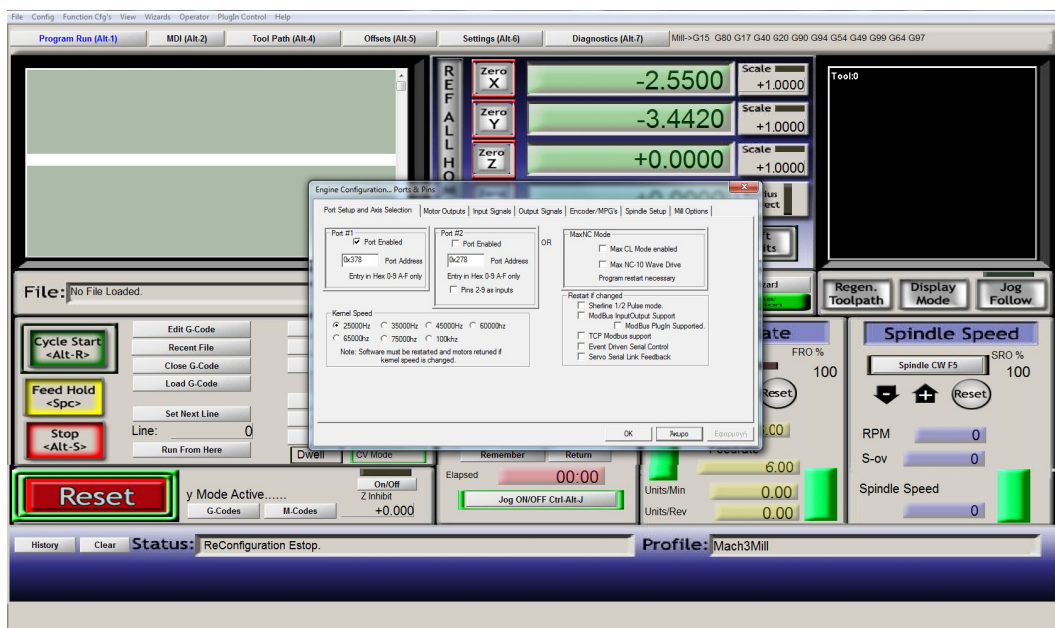


Figure 1.2

It's important to **Enable** the spindle and allocate a Step Pin/Port for it. You should also define if this signals are active low.
When done click apply button.

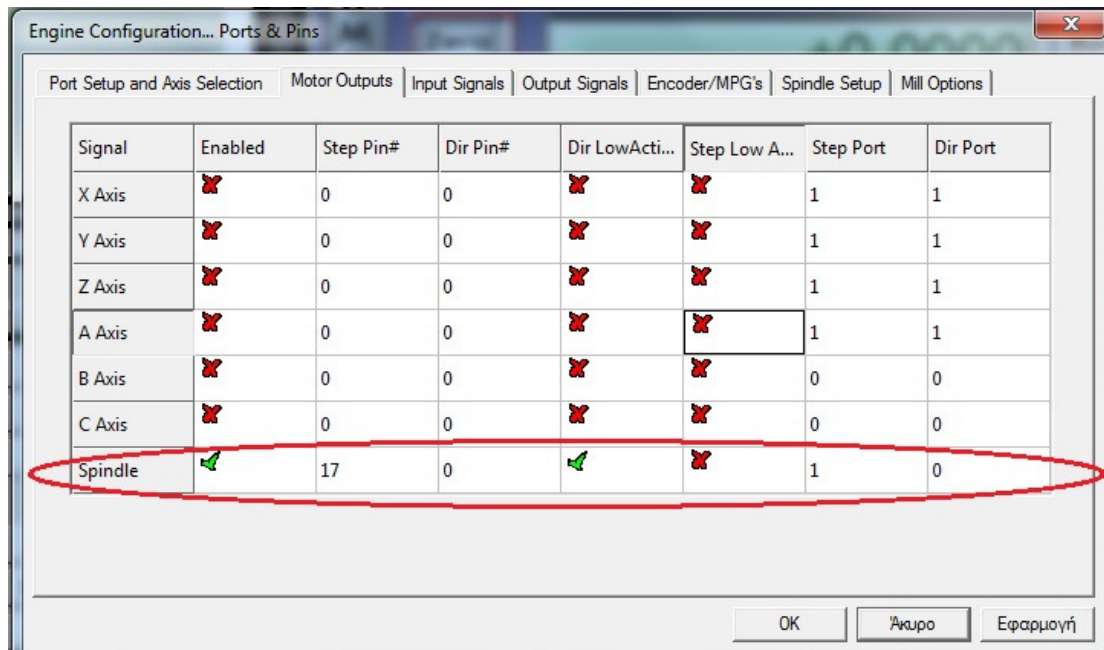


Figure1.3

The next tab you have to configure is **Spindle Set up**

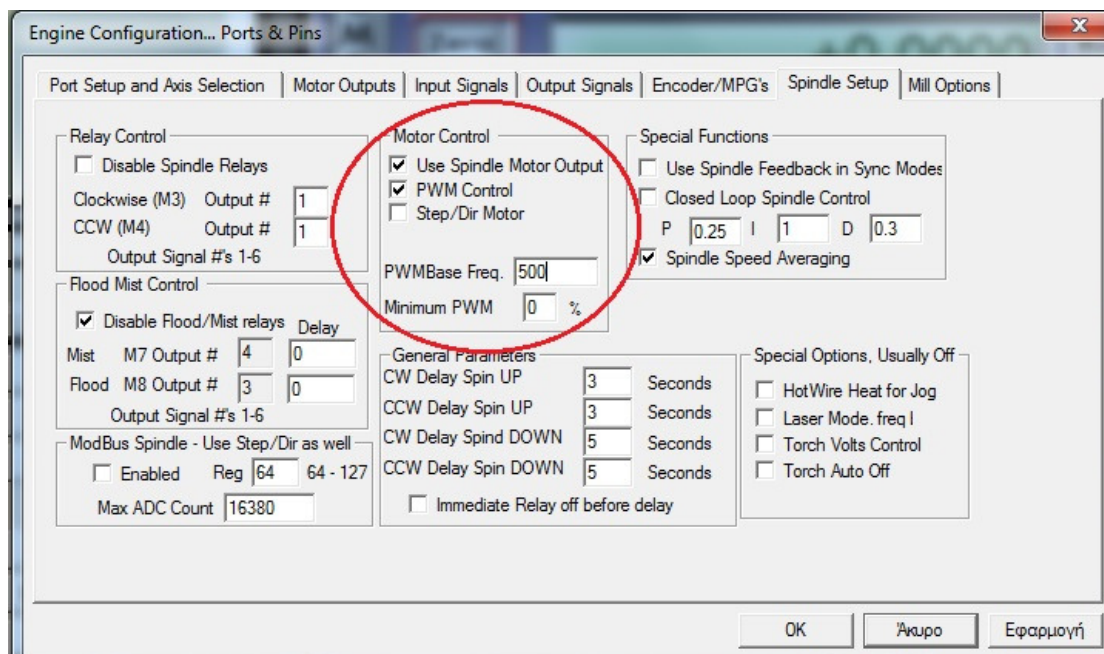


Figure 1.4

You have to make the check as you see in **Figure 1.4** and click apply button. You have to control if parallel port of the computer sent PWM signal to the right pin you had select.

If everything is all right proceed to the connections as shown on **Figure 1.6**

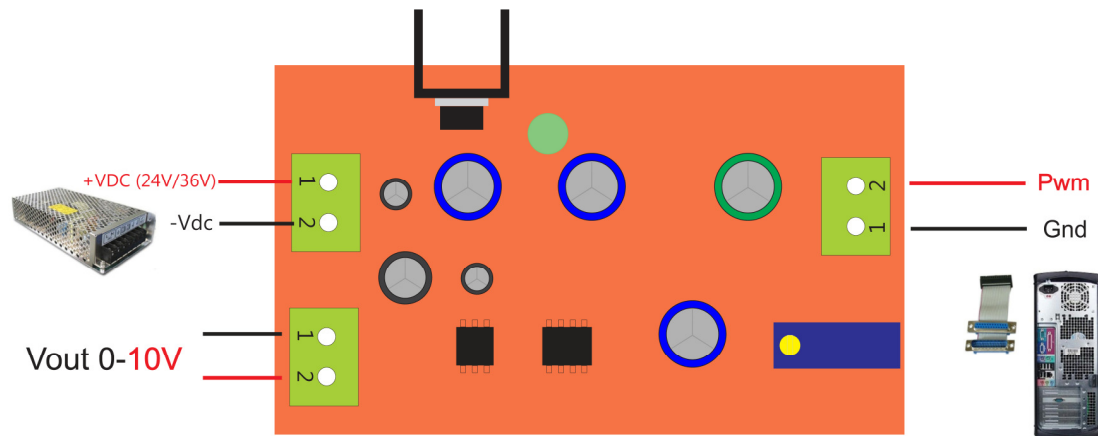


Figure 1.6