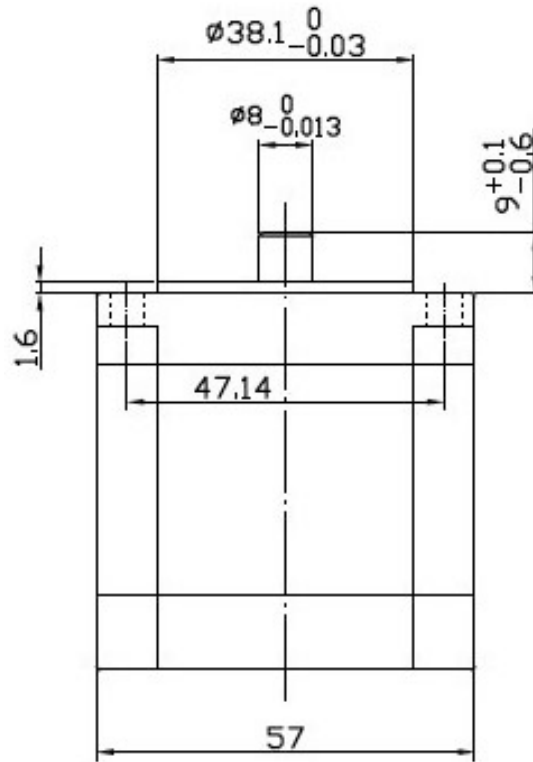
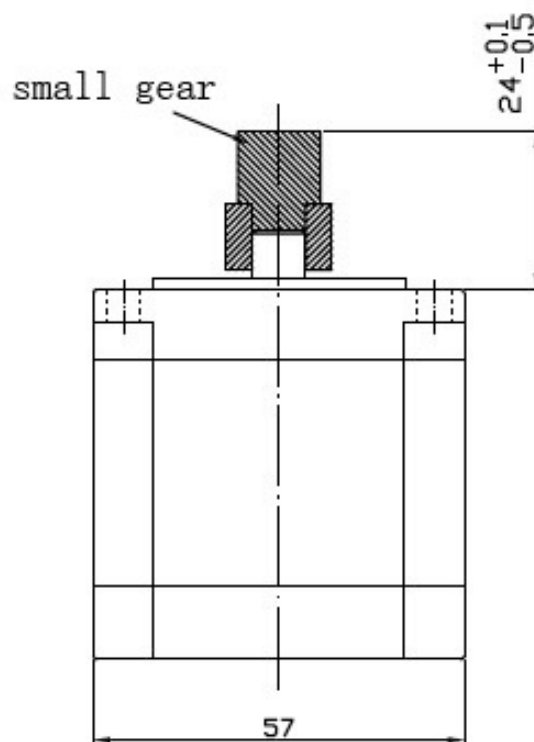


1. Your motor must be at the same size as this photo below:  
You can use sandpaper to polish your motor shaft, then apply some anaerobic adhesive on the shaft.



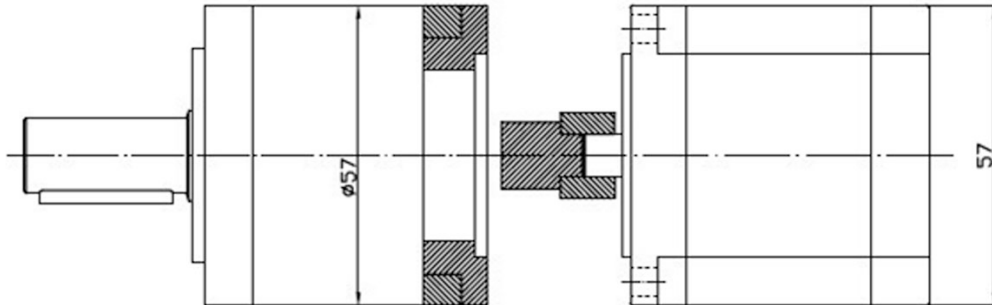
2. Install the small gear on your stepper motor to the height on the photo below:



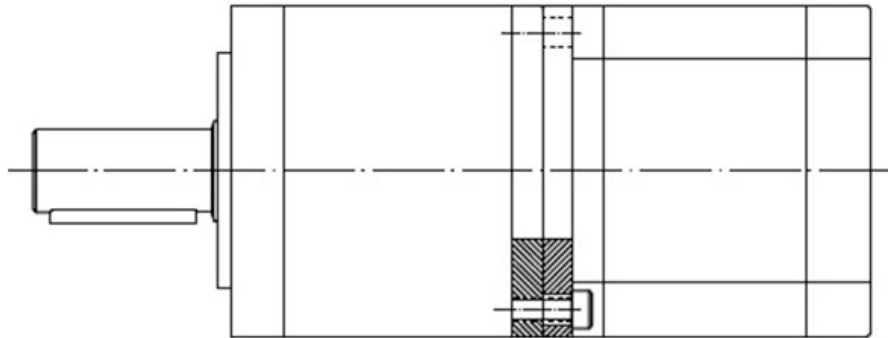
# CNC CAT

*low cost... high quality...*

3. Install the planetary gearbox on your stepper motor as the photo below It must be vertically installed, do not beat it



4. Use the screw to fasten them:



CNC CAT

# CNC CAT

*low cost... high quality...*

3rd km Veria-Agia Varvara  
59150, Veria, Imathia, Greece  
+302331091222  
+302117707270  
[www.cnccat.gr](http://www.cnccat.gr)  
[info@cnccat.gr](mailto:info@cnccat.gr)