

## Canon 580ex2 manual

---

© The-Digital-Picture.com



**File Name:** Canon 580ex2 manual.pdf

**Size:** 1554 KB

**Type:** PDF, ePub, eBook

**Category:** Book

**Uploaded:** 17 May 2019, 16:13 PM

**Rating:** 4.6/5 from 710 votes.

# Download Now!

Please check the box below to proceed.



I'm not a robot



reCAPTCHA  
Privacy - Terms

## Book Descriptions:

### Canon 580ex2 manual



This page requires Javascript. Modify your browsers settings to allow Javascript to execute. See your browsers documentation for specific instructions. To install your download click on the name of the downloaded file.

Recommended Software	File Name	Date	File Size	Optional Software	File Name	Date	File Size
Recommended Manuals	File Name	Date <td>File Size</td> <td>Optional Manuals</td> <td>File Name</td> <td>Date</td> <td>File Size</td>	File Size	Optional Manuals	File Name	Date	File Size

This Limited Warranty is only effective upon presentation of this warranty card and proof of purchase. Equipment covered by this Warranty will be repaired in the United States, WITHOUT CHARGE, by our Service Centers and Authorized Service Facilities. When returning equipment for warranty service, the shipping charges must be prepaid and the equipment should be shipped in its original carton or box, or an equivalent, properly packed to withstand the hazards of shipment and be fully insured. A bill of sale, copy of this warranty card or other proof of purchase should be enclosed, as well as a description of the problem, film samples, etc. Repairs will be made and the equipment will be return shipped at NO CHARGE. This warranty covers all defects encountered in normal use of the equipment, and does not apply in the following cases

List of international service facilities included with equipment.

List of participating international service facilities included with equipment.

This warranty is given by Canon U.S.A., Inc., with respect to equipment purchased in the United States.

Scroll down to easily select items to add to your shopping cart for a faster, easier checkout. Visit the Canon Online Store

Also allows for Remote Triggering of the flash. Upon completion of the download, the PDF file opens automatically. You may download and use the Content solely for your personal, noncommercial use and at your own risks.

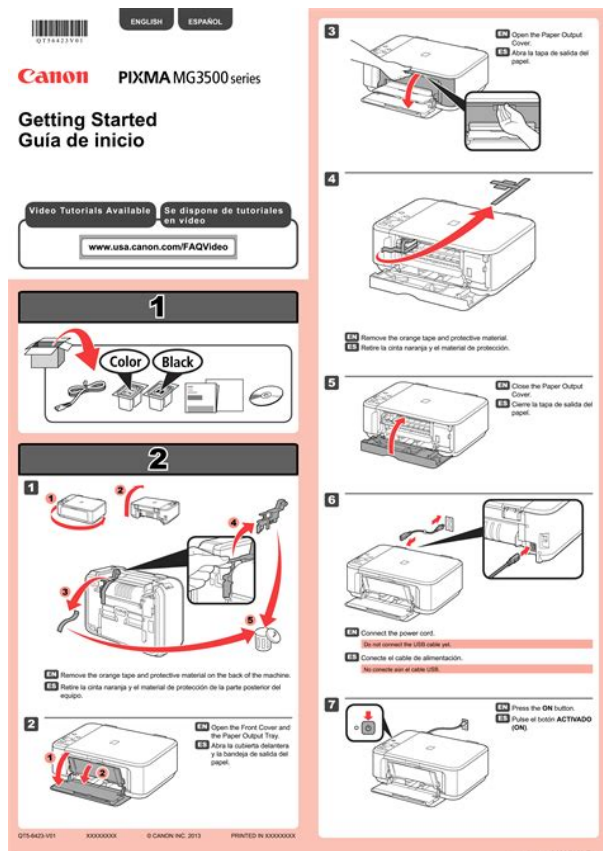
<http://www.aias-busto.it/userfiles/dmv-washington-dc-driver-s-manual.xml>

- canon 580ex2 manual, canon 580ex ii manual, canon speedlite 580ex ii manual pdf, canon 580ex ii service manual pdf, canon 580ex ii repair manual, flash canon 580ex ii

**manual, canon 580ex ii manual pdf, canon 580ex ii manual slave mode, canon 580ex 2 manual, canon 580ex manual, canon 580ex manual pdf.**



Canon shall not be held liable for any damages whatsoever in connection with the Content, including, without limitation, indirect, consequential, exemplary or incidental damages. You shall also not and shall not let others reproduce, modify, reformat or create derivative works from the Content, in whole or in part. Other features include a metal hot shoe with an improved locking mechanism for added durability, an external metering sensor for nonTTL automatic flash exposure control and a PC Terminal for use with nondedicated slave triggers. Leave a Comment Cancel reply Save my name, email, and website in this browser for the next time I comment. Speedlite Flashes \ Speedlite 430EX II; Speedlite 430EX II The Speedlite 430EX II is also quieter. Rent a Canon Speedlite 580EX II Flash. Offer subject to Canon Online Store Terms of Sale. Thank you for purchasing a Canon product. Speedlite 580EX II. One of these is an external automatic flash. Canon's highend Speedlite 580 EX II has a couple of features long requested by serious amateurs and professionals. Canon speedlite googledoc. The Canon Speedlite 430EX is a multi feature flash unit for Canon EOS cameras.Reload to refresh your session. Reload to refresh your session. It is still a superb professional flash only differing from the 600EX iiRT in not having radio wireless or the slightly longer 200mm zoom focal length. However in does have the optical wireless communication system light pulses requiring lineofsight and you can often pick up a secondhand bargain on ebay since so many photographers are upgrading to radio wireless. If you don't need radio wireless then this is an excellent buy. If you need radio wireless then you can easily use third party devices see info in the wireless communication section below. It's also weather resistant.[http://www.pharma-tools.eu/galeria/file/dmv\\_dc\\_gov-drivers-manual.xml](http://www.pharma-tools.eu/galeria/file/dmv_dc_gov-drivers-manual.xml)



This speedlite utilises the Canon EX optical wireless system and can be used as an optical master or optical slave unit making it compatible with speedlites such as the Canon 580EX II, Canon 580EX, Canon 430EX II, Canon 430EX, Canon 470EXAI, Canon 600EX iiRT, Canon 600EX RT, Canon 430EX iiiRT flashes as well as the Canon STE2 Speedlite Transmitter. There is no inbuilt radio wireless communication. If you want to add radio wireless functionality to this flash you could try the Yongnuo 622CTX transmitter and Yongnuo 622C receiver 622C radio system or just add a Yongnuo YNE3RX receiver when used with Canon's RT radio system or a Godox X1RC receiver when used with Godox X radio system. The three previous methods allow full transmission of ETTL II information as well as manual info. If you only want a very basic radio trigger for the flash in manual mode you could consider a pair of Neewer F16 transceivers. Transmitter maximum range approximately Indoors 1215m, Outdoors 810m No.Lithium not recommended Recycling time Approx. 0.1 to 5 seconds Number of flashes approx 100700 Flash duration Flash Colour temperature 5600K tbc External power source socket Yes, Canon compact battery pack CPE4 or the Godox PB960. It helps me keep adding to this free website when you get anything through these links — but I receive nothing for my efforts if you take the chance of buying elsewhere. Buy only from the approved sources I use myself for the best prices, service, return policies and selection. Thanks for helping me help you! Ken. I cant vouch for ads below. It works perfectly with all Canon EOS cameras, both 35mm and digital. If you use thirdparty wireless radio control devices see Phil Steeles excellent tutorials , you can use this 580EX II to do exactly the same radio triggering. This 580EX II of course does all the usual optical and IR remote triggering and control.

If youre not using radio control and are using it oncamera or with optical remote wireless control, there isnt anything better. The 600EX series does recycle a little faster, but the power is the same bolstered only by a slightly better reflector system at the longest zoom settings and this 580EX II recycles superfast. This 580EX II recycles in just 4.1 seconds from a fullpower dump, and does it silently. It usually recycles instantly. Any of the smaller flashes are fine for every other use, and even for daylight fill if youre not too far away. No worries; the newest 35mm cameras you might actually want to shoot like the EOS 3 and EOS 1V are all the newest type A cameras on which all the features

work perfectly. More at Users Guide. Canon has designed it well, everything is obvious except for the custom functions. Just tap the buttons and things happen directly and immediately; there are no menus. Sadly it doesnt turn on when you hit the cameras LIGHT button. Its more than just one beam. Different flashes will give the same results, with the only difference being if they have enough power and if they are ready to shoot fast enough. Its the same size, weight and has the same power, although it does have an improved reflector system that can zoom longer so the specifications make it seem more powerful. The dedicated icons and numbers are much easier to read on the 580EX than the grainy dotmatix representations on the 600EX. It works as an optical slave, but cant work as an optical commander as the 580EX II can. It has only a halfstop less measured power and potentially faster recycling than the 580EX II. It has a plastic foot with an crummy locking ring that never works. It has an EL backlight versus the green LEDs of the new 580EX II. The original 580EX is not weather sealed. It works well for action and fillflash. The 320EX is great for just about anything unless youre using long lenses for fill outdoors in daylight, for which the 580EX II is superior.

<http://gbb.global/blog/3vze-factory-service-manual>

Features are fine, but I just want the flash to fire when I take a picture. I don't use any of the remote features or light modifiers. For most people, the midsize 430EX III RT is also a perfect fit, too. The smaller flashes are great for when the flash is pointed directly at the subject. The 580EX II's extra power is needed if you're using bounce, diffusers or other light modifiers because they lose most of the light. For most conditions the 320EX is more than enough. They don't run down when you don't use them, and are loaded with power for fast recycling even if you haven't used your flash in months.

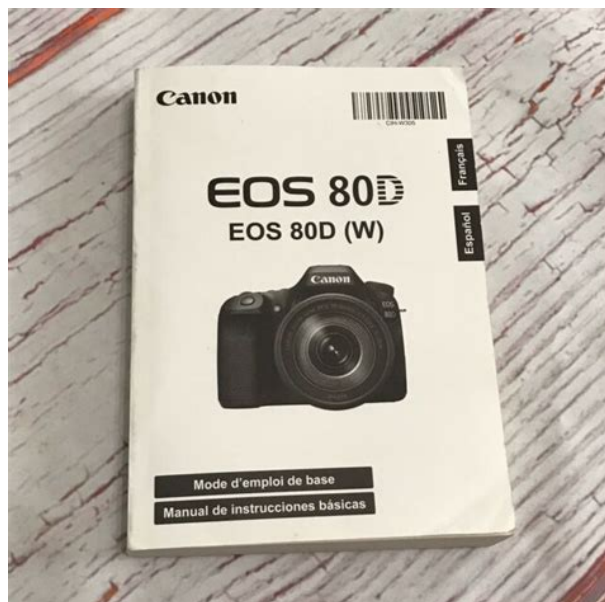
<https://gpwestlondon.com/images/brother-dcp-165c-repair-manual.pdf>



It helps me keep adding to this free website when you get anything through these links — but I receive nothing for my efforts if you take the chance of buying elsewhere. It costs you nothing, and is this site, and thus my family's, biggest source of support. These places have the best prices and service, which is why I've used them since before this website existed. I recommend them all personally. It's great people like you who allow me to keep adding to this site fulltime. Thanks! Thank you. Discover everything Scribd has to offer, including books and audiobooks from major publishers. Start Free Trial Cancel anytime. Report this Document Download Now save Save Canon 580EX II Repair Manual For Later 100% 1 100% found this document useful 1 vote 5K views 97 pages Canon 580EX II Repair Manual Uploaded by rigorjaa Description Full description save Save Canon 580EX II Repair Manual For Later 100% 100% found this document useful, Mark this document as useful 0% 0% found this document not useful, Mark this document as not useful Embed Share Print Download Now Jump to Page You are on page 1 of 97 Search inside document Browse Books Site Directory Site Language English Change Language English Change Language. The 580EX II is Canon's top-of-the-line, professional grade external flash. There are very few features missing in this one. And since image quality is ultimately important to me, my biggest concern is what my flash-exposed shots look like. So, getting down to business. Since the flash head working area size is nearly identical between the two flashes, original size of the light thrown by them is going to be the same. The amount of light thrown; however, is always the question. How well does the ETTL exposure work? Using my original 580EX flashes and a new 580EX II, I tested various scenarios, camera, lens and setting combinations including the following: With the camera in M mode, the 580EX II is giving me images that are .3 stops darker on average with a rather small standard deviation.

<http://grahambettsmotors.com/images/brother-dcp-315cn-user-manual.pdf>





I didn't notice any change in exposure comparisons with the flash head in the bounce position. Of course, a little flash exposure compensation results in identical results in most circumstances. In this scenario, the original 580EX completely blew the highlights, while the 580EX II exposed at over 1.5 stops lower slightly too low, but retaining the highlights. In nearly all cases, I would pick the 580EX II exposure over the 580EX without FEC by a slight margin. What is more noticeable to me is the lack of sound during the recharging phase. I've grown accustomed to listening to the whine of the charging flashes I can audibly tell when they are at full power and know when the batteries are nearing the end of their charge. I definitely like the new, very professional quiet charging, but I need to relearn my flash-ready indicators. I should note that the flash is not sound-free as the zoom flash head still makes noise. The flash head zoom noise is higher pitched. I wouldn't call it louder, but it is possibly more noticeable sometimes. Bad in that it will still be the part that breaks, but good that your camera likely will not be the part that breaks a broken flash beats a broken camera any day from my perspective. The long-time standard plastic foot is shown above left the new metal 580EX II metal foot is shown above right. This is Canon's first weather-resistant flash. Dust and water resistance is a feature that is going to be in heavy demand from sports and photojournalism photographers. The final sealing at the camera's hot shoe requires the changes implemented in the announced at the same time and appealing to the same photographers. Users of older and nonsealed bodies will not get this final sealing protection, though the rest of the flash is sealed. A little tape can probably remedy this issue for older weather-sealed bodies.

Rubber covers seal the external ports for external power and the new, greatly needed receive-only PC terminal. Pocket Wizard RF remote users know what this port does for them. The PC terminal is located just above the foot on the flash's left side. Simply thumb slide the lever from left to right until it clicks into locked position. Feet lower to tighten the flash solidly onto the hot shoe and the locking pin is lowered. A lock release button is located just to the right of the lever making unlocking easy. The new lever is faster to use I like it. Newer Canon DSLR bodies have the ability to control the flash from their menus this becomes the easier method of controlling this flash option. Note the adhesive Velcro shown on the original 580EX above left is an accessory used to hold certain flash modifiers in place. Small changes include a repositioned wireless slave sensor and a reconfigured AF assist beam emitter. The 580EX II weighs 1 lb 2.6 oz 525g with 4 NiMH batteries installed compared to 1 lb 1.4 oz 490g for the 580EX actual tested weights. The 580EX II sports a new power switch design this one rotates instead of sliding. The new one is a little nicer and likely easier to seal, but the physical change is not significant from a user perspective. The flash body finish is slightly more textured than that of the 580EX. The built-in meter measures reflected light and turns off the flash when the proper amount is detected. Metered off a gray card manual flash is also available. A custom function menu

setting is used to select the external metering modes. High speed synch is not available and no preflash is fired in the external metering modes. My comparisons showed external metering, even from a 1D Mark III, to be significantly underexposed typically 1.5 stops or so unless the subject was very dark. ETTL II and the previous ETTL are Electronic Through the Lens metering modes that fire a preflash to determine how powerful the immediately following actual flash needs to be.

<http://andreagarciam.com/wp-content/plugins/formcraft/file-upload/server/content/files/162704e152c867---boss-me-50b-instruction-manual.pdf>

This is Canon's very easy to use automatic flash. Some people love it and some don't. I personally like it very much. And likely many more models by the time the 580EX II is retired. ETTL II advances ETTL by incorporating distance information from newer Canon lenses into flash exposure calculation. This flash also passes color information to the camera. With the camera in M mode, the flash will provide the light necessary to get a proper exposure. This is the easiest mode to use for flash as the main light stopping even the fastest action in the dark. Camera and subject motion can be issues in this mode unless a custom function provided only on some cameras is selected to increase the shutter speed. Tv mode is similar to Av mode. I'll let you explore the rest of the modes available on your camera see your camera's manual. If your subject distance is consistent for formal portraits for example, a manual flash output setting can eliminate shot-to-shot exposure variations. Using the control dial, it is easy and fast to set manual flash power output. Become familiar with this mode. In this mode, the 580EX II fires a rapid series of flashes as setup in the menu. Unleash your creativity with this one. Modeling flash is available with the DOF Preview button. This is a very nice feature. Every time I change batteries in the 580EX above left, I have this little fear that I am going to break the battery door off while trying to get it open. Fear no more the 580EX II has a new door above right. Slide the round button sideways and then down the battery door springs up for clear access to the 2x2 square not staggered oriented AA batteries. This is the way it should have been in the first place. The 580EX II is rated for approximately 100 to 700 shots from new AA size alkaline batteries which deliver a fast recycling time of approximately 0.1 to 6 seconds. For quick flash firing a not completely charged flash, recycle times range from 12.5 seconds again from new AA size alkaline batteries.

[domainersuite.com/ckfinder/userfiles/files/camera-on-manual-flash-on-ttl.pdf](http://domainersuite.com/ckfinder/userfiles/files/camera-on-manual-flash-on-ttl.pdf)

NiMH batteries have much less internal resistance than alkaline batteries resulting in significantly shorter recycle times up to 50% faster. NiMH batteries also give more consistent full power until they are discharged while alkalines will recycle the flash more and more slowly as they expend their life. Adding environmental concerns and cost to this equation should make the decision to use NiMH batteries a no-brainer. Buy lots of them and use them in everything you own that accepts them get a smart charger such as is made by Powerex. A new at the same time weather sealed Compact Battery Pack CPE4 or the older nonsealed CPE3 can be used for faster charging and more flashes per battery change. Chuck Westfall Canon USA clarifies this for us. However, there is a thermistor inside the Speedlite that prevents the flash from firing when internal temperature exceeds a certain unspecified level. If the thermal cutoff kicks in, the flash cannot be fired until it cools down sufficiently. This usually takes about 15 minutes. C.Fn 14 disables Auto Power Off, but it does not disable the thermal cutoff. FEC Flash Exposure Compensation. At certain shutter speeds, the second curtain starts to close before the first curtain is completely open standard flash mode needs a wide open aperture for the instant it flashes light. In HS mode, the faster the shutter speed, the shorter the effective flash range will become. FEC overrides the camera setting while other settings are determined by the location of the last adjustment. The zoom setting can be set manually for creativity or automatically by the camera communicating with the flash. The zoom setting is optimized for the camera and lens being used. Less light is wasted, battery life is maximized. This means that the Canon EF 1022mm USM Lens is supported on EF/EF-S compatible Canon bodies. A lens wider than 24mm or equivalent framing requires the pullout and flipdown diffuser panel to be used



for complete frame flash coverage.

A lens wider than 14mm such as the Canon EF 15mm Fisheye Lens requires bounce flash or an accessory diffuser such as a StoFen OmniBounce. Rotating the flash head to bounce position results in a 50mm zoom position. When using bounce flash, consider also using the retractable catch light panel. This is a white, semirigid plasticlike panel meant to create a bright reflection in the subjects eyes. The catchlight panel is only useful to a certain distance as the reflection size becomes too small to be useful at some point. AF assist projects a red pattern of light that creates enough contrast for the camera to autofocus on even a solidcolored wall. The AF assist beam is functional within its range 232.8 .6m10m in the center, 216.4 .6m5m at periphery. The 580EX IIs AF Assist Beam is aligned with the focus points on all of Canons EOS bodies with 1, 3, 5, 7, 9, or 45 AF points. This is a powerful feature that I use a lot. Note Even when disabled, the master flash will fire a preflash making it appear to be enabled. Canon Speedlites use light not RF from the flash head for simple wireless flash communications. This is basically a line of sight system though indoor use can include nonline of site remotes if the light bounces off objects in the room sufficiently to communicate with the remote flashes. The transmission range for wireless communication are periphery center 39.449.2 12m15m indoors and 26.232.8 8m10m outdoors. Four slave channel IDs are available to avoid conflicts with other photographers. Why use an external flash. The answer may be obvious to owners of camera bodies without a built in flash, but not so clear to those using bodies with a built in flash. The built in flash is great for fill flash to light the shaded areas such as peoples eyes in a pictures. To use fill flash, set your exposure for the ambient light, then dial in 1 to 2 EV FEC Flash Exposure Compensation. The built in flash is also useful for adding catchlights sparkle in a subjects eyes.

Items close to the flash are often overexposed, the background often becomes black, harsh shadows typically abound and subjects tend to become flat looking. But, sometimes there is no choice it is simply too dark, the subjects are in action. In this case, you simply must use the flash for the main light. But, this does not mean the flash must be fired directly toward the subject. Thus, the main light becomes the wide reflecting surface and the broad light source creates a much softer, less flat and far more pleasing image. The swivel and tilt features allow the 580EX II to be aimed as desired. Using an E-TTL compatible Canon Off Camera Shoe Cord OCE3, This allows specific placement of the flash in relation to the camera. Keeping the flash mounted higher above the lens to send the subjects shadow lower where it is not as unpleasant. A bracket is also useful for macro photography. An accessory flash can be mounted in a softbox or umbrella for superb lighting. Multiple wireless remote flashes can be setup for a highly portable, complete professional lighting setup. Visit the links at the end of this review for more ideas and information on offcamera flash use. Wider lenses will have a shorter effective distance, for example. Canon makes a Speedlite 220EX, but it is rather featureless good mostly for fill flash. The 430EX has a Guide Number of 141 43 m while the 580EX II has a Guide Number of 190 58 m both at 105mm. The 430EX is not under powered for many uses, Any number of Canon 430EX, 420EX, 580EX II, Speedlites can be combined as slave units but only the Canon 580EX II, 580EX and 550EX Speedlites can act as slave masters. In addition, the Canon Macro Ring Lite MR14EX, Macro Twin Lite MT24EX, or Many people start out with a Canon Speedlite 430EX Flash or started out with 420EX and later move up to a 580EX or 580EX II. The 430EX can then be used as a remote flash.

You can still utilize the 430EXs focus assist, but need to know that all focus points are not covered as in the 580EX II. The 430EX does not have this capability, nor does it have the PC terminal. Instead of a dial for adjusting settings, the 430EX utilizes rounded parenthesis shaped buttons. I can understand making buttons safe from accidental changes, but these buttons are narrow and require an excessively deep press to make changes. The dial is much easier to use. Otherwise, the 430EX is a very nice flash as well. It is about 15% lighter and more than 25% smaller in overall volume.

Perhaps most important is that the Canon Speedlite 430EX Flash is less expensive. Also included is a slightly modified from the 580EX shoe stand for remote flash operation. Thus, I depend solely on the commissions received from you using the links on this site to make any purchase. I am grateful for your support! Bryan You expect to get what you ordered, and you want to pay a low price for it. The retailers I recommend below are the ones I trust for my purchases. Get your Canon Speedlite 580EX II Flash now from Consider renting. Renting is fast and easy. The rental companies I recommend below are excellent to work with. Schedule your rental now [LensRentals.com](http://LensRentals.com) [LensProToGo](http://LensProToGo.com) Using these links for your rental supports this site Can you help right now Please choose a different delivery location. Our payment security system encrypts your information during transmission. We don't share your credit card details with thirdparty sellers, and we don't sell your information to others. Please try again. Please try again. Then you can start reading Kindle books on your smartphone, tablet, or computer no Kindle device required. In order to navigate out of this carousel please use your heading shortcut key to navigate to the next or previous heading.

Register a free business account If you are a seller for this product, would you like to suggest updates through seller support To calculate the overall star rating and percentage breakdown by star, we don't use a simple average. Instead, our system considers things like how recent a review is and if the reviewer bought the item on Amazon. It also analyzes reviews to verify trustworthiness. Please try again later. M. R. 1.0 out of 5 stars Way overpriced for what it is. You are better off downloading the manual and printing it yourself. It is all I could hope for. The pages are then spiral bound with a clear acetate front cover and red card back cover, held together with a strong white wire. Your manual will lay flat when open. EOS M og EOS R serierne af spejllose fullframe kameraer leverer samme styrke som et digitalt spejlreflekskamera i et kompakt kamera. Fa mere at vide om vores brug af cookies og rediger dine cookieindstillinger her. Du accepterer vores brug af cookies pa din enhed ved at fortsette med at bruge vores webside eller ved at klikke pa Jeg accepterer. Det tager 1 minut og vil hjelpe os med at forbedre vores supportwebsted. Sections. More Canon has, however, and discontinued the 580EX, and for some very good reasons. The specifications show a range of 0.1 to 6 seconds with four AA size batteries, either alkaline, lithium or rechargeable NiMH. This is a huge scale, especially compared to the Nikon Speedlight SB900, with recycling times of 2.3 to 4.5 seconds, depending on the type of batteries used. Its metal foot is just one improvement that represents how Canon made the 580EX II stronger and capable of withstanding plenty of rough handling. The unit has a builtin meter that reads the reflected light and then regulates the amount of light from the flash. ISO and aperture settings must be manually fed to the flash unit instead of being automatically communicated via a compatible camera.

The eTTL II upgrade calculates flash exposure with distance data from newer Canon lenses, and also shares color information with the camera. This helps to maintain exposure when the distance from the camera to the subject will not change during a shoot, such as studio portraits. Although not a huge feature, being able to select the flash's custom functions settings from the camera is another plus for Canon freaks. Use it as a master to manage ratios for as many as three groups or as a slave with compatible Canon Speedlite models. Add the Canon STE2 Wireless Transmitter to the system as a dedicated control point. Select FEC, HighSpeed synch, FE Lock, FEB, manual flash and Stroboscopic flash settings on the primary unit and this data is conveyed to the slave units and automatically set. Check this out. Get the scoop on the categories you need to focus on! In this detailed metal print comparison, we discuss the pros and cons of metal prints from six leading companies. You must have JavaScript enabled in your browser to utilize the functionality of this website. Sell your camera today and get top market value. Shows moderate wear Glass may have slight Purchase an extra manual if you need more information about the settings, features, or specifications of your flash. It only takes a minute to sign up. In the book, all of the examples are with Nikon flashes and there are some differences in the way way the flashes function. The manual mode of the Nikon flash allows the photographer to set the aperture, power and ISO and then

returns a specific flash distance. On my Canon flash, if I set the custom function 53, I can enter the ISO and aperture on the flash unit but not the power changing modes to the the other mode labeled Manual seems to operate entirely independently and then, instead of a specific distance, it displays a range of distances.

<https://www.becompta.be/emploi/3vze-factory-service-manual>