

File Name: Canon lenses service manuals.pdf

Size: 2772 KB

Type: PDF, ePub, eBook

Category: Book

Uploaded: 24 May 2019, 23:40 PM

Rating: 4.6/5 from 845 votes.

Download Now!

Please check the box below to proceed.



I'm not a robot



reCAPTCHA
Privacy - Terms

Book Descriptions:

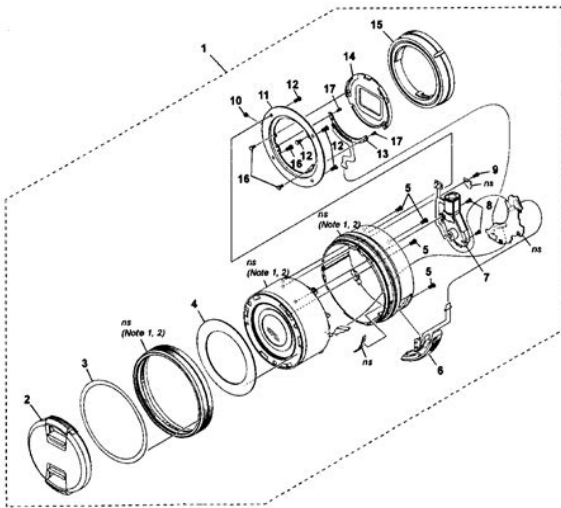
Canon lenses service manuals



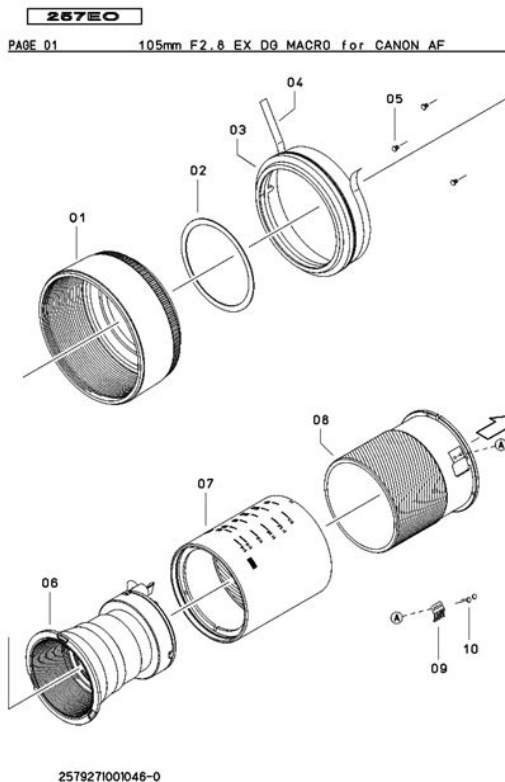
This is the largest online collection of free service manuals that we know of. In the future, we will also have some original hardcopy books for sale. Also covers Bogen 400B Covers several models in the Prolight range. Covers 200mm f1.8, 600mm f4, and Extender 1.4x Covers 3570mm f3.54.5, 35105mm f3.54.5, and 70210mm f4. For RebelX, RebelXS, EOS500, and EOSKiss cameras. Covers models VIT, VIL, and P. A lot of people today can perform basic repairs on their camera. Don't worry about unnecessary costs as you know more about the inner workings of your equipment before you talk to the service center. Since the manual is created by Canon you won't find a better source anywhere else. Do not count on too many stepbystep instructions. It is normally only a schematic with part numbers for each piece. Still this is invaluable information when ordering pieces and trying do dismount the equipment. Be care full when removing the old one, you do not want broken parts to end up inside the lens. If some piece of the plastic is missing you need to check so that the missing part is not doing damage inside the lens. To check for lost parts inside a lens, a total disassembly might be needed. Please reload the CAPTCHA. Learn more about how to take care, and keep them clean. If you continue to use this site we will assume that you are happy with it. Ok Privacy policy. EOS M and EOS R Full Frame mirrorless ranges deliver the power of DSLR in the body of a compact camera. You can also view our Frequently Asked Questions FAQs and important announcements regarding your Lens product. One thing Ive noticed while reading through the previous threads, is that a lot of people are having a hard time realizing just how much information is being sent from the lens to the body. And since this seems not to be discussed in much depth in any of the references that Ive seen linked to, I believe that knowing more about that would be helpful to everyone. http://fanaf.com/article_ressources/driving-manual-in-snow.xml

- **canon lens service manual, canon lens service manual pdf, canon fd lens service manual, canon ef lens service manual, canon broadcast lens service manual, canon lenses service manuals, canon lenses service manuals pdf, canon lenses service manuals free, canon lenses service manuals online, canon lenses service manuals download, canon lens service manuals.**

ns: not supplied



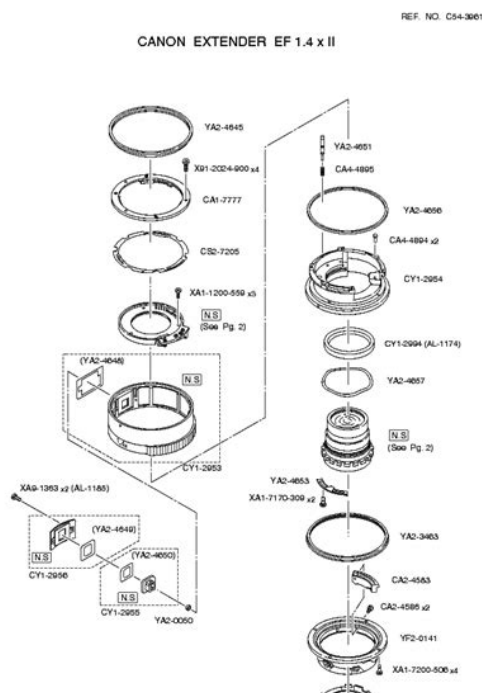
I found, someplace on the web, a PDF version of a document called CanonI have not gone through it entirely to find all of the points pertinent to these discussions. But one argument I see put forth over and over in these threads is the idea that the body simply cannot know enough about the misfocus magnitude, the lens current position, and its characteristics, to be able to issue a single movement command that will nail the focus in one, single, openloop AF cycle. This document would change your minds about that. The amount of information being sent to the body is amazing. I am still at a loss to know if it would be a violation of Canons copyright for me to simply post this document. I found it on the web, but I dont remember where, or Id post a link and feel safe doing so. But here are some points The body does know the absolute current position of the focus mechanism of the lens. The body does know the lens focal length even the current focal length for zoom lenses. The body does know the characteristics of the stepper drive for THAT lens. There is a LOT more in that document. Ill try to find the time to read it over and make some notes from it. We know that new lenses can have that data rewritten by the service centers because its not in a writeonce ROM these days, but instead, is in some form of flash or electrically erasable ROM. But keep in mind that its an OLD document, and a lot of improvements have been made to make the newer lenses even better. BUT, a lot of how this all works must remain the same or at least be accounted for in the newer Canon bodies because these old lenses work just fine on even the newest Canon bodies. My hat is off to Canon for having come up with a system so long ago that can still be supported without hampering improvements over the years. Bravo hide signature . Jim H. Read our full review to see why its got the best autofocus system weve ever seen.<http://queueedge.com/userfiles/driving-manual-hard.xml>



716 Olympus OMD EM10 Mark IV initial review first impressions Aug 4, 2020 at 0600 The Olympus OMD EM10 IV is the companys entrylevel DSLRshaped mirrorless camera. While it has a higher resolution sensor and new processor, its biggest focus is on selfies. 2258 Sony a7S III initial review Jul 28, 2020 at 1400 The Sony a7S III is a 12MP fullframe camera primarily designed with video in mind. We take a look beyond the specs to see what it offers to filmmakers. 1608 Olympus OMD EM1 Mark III review review Jul 27, 2020 at 1450 The Olympus OMD EM1 Mark III is our favorite Micro Four Thirds camera for stills shooters to date. In this roundup we take a look at four travel tripods and pick our favorite. In our latest buying guide weve selected some cameras that might be a bit older but still offer a lot of bang for the buck. These midrange cameras should have capable autofocus systems, lots of direct controls and the latest sensors offering great image quality. Best cameras for sports and action Aug 11, 2020 at 0146 Whats the best camera for shooting sports and action. Fast continuous shooting, reliable autofocus and great battery life are just three of the most important factors. In this buying guide weve roundedup several great cameras for shooting sports and action, and recommended the best. Best enthusiast long zoom cameras Jul 16, 2020 at 2329 Longzoom compacts fill the gap between pocketable cameras and interchangeable lens models with expensive lenses, offering a great combination of lens reach and portability. Read on to learn about our favorite enthusiast long zoom cameras. This page requires Javascript. Modify your browsers settings to allow Javascript to execute. See your browsers documentation for specific instructions. It only takes a minute to sign up. Please be sure to answer the question. Provide details and share your research. Making statements based on opinion; back them up with references or personal experience.

To learn more, see our tips on writing great answers. Browse other questions tagged lens repair oldlenses or ask your own question. The little window that is arrowed Processing is what you click on when it changes to Download and this can be very slow. Which is the reason Im going into all this detail Why What have you heard! Life is too short to let us try every lens. Canon FX and FP are essentially identical cameras except for theExploded views of cameras andThe QL mechanismsThe TL QL pages are limited since it is essentially an FT QL. 97FL Lenses Service. Comprehensive

illustrated service and repair manual with explodedF1.2, 300mm F5.6 FLF, 35mm F2.5, 85mm F1.8, 500mm F5.6 FLF, 35mm. F3.5, 100200mm F5.6 Zoom. Note some of the supplement and addendumComplete illustrated repair instructions with exploded views,Note the pages inDetailed illustrated repair instructions with exploded views, circuitNote the pages inDetailed illustrated repair instructions with exploded views, circuitNote the pages inDetailed, illustrated service instructions with exploded views andScoopic 16M Repair Manual. Fully illustrated. Complete schematics, exploded views, parts andF1, First Model, Service and Repair Manual. Detailed service and repair instructions, illustrated with repairNote thereF1 Accessories Motor c1973. Service Manual. Fully illustrated. Complete parts and service manual covering the F1. Motor Drive Unit; Film Chamber 250; Remote Switch MD; Film LoaderServo EE Finder Accessories for Canon F1. CoveringFully illustrated. Reprinted from the National Camera Repair Manual. Stepbystep repair instructions with detailed photographs and wiringAE1 Camera NatCam Repair Manual. Reprinted from the National Camera Repair Manual. Each page is photoThe photos areFully illustrated. Reprinted from the National Camera Repair Manual.



<http://superbia.lgbt/flotaganis/1648337272>

Concentrates on large, detailed photographs, with accompanying textFully illustrated with exploded views, component and circuitNote page 19 Tools and Expendables List, page 21 Main Flex RemovalFull service and repair instructions, detailed exploded views andCovers the early breech lock lenses with rotating chrome lensCovers the early breech lock lenses with rotating chrome lensCovers the early breech lock lenses with rotating chrome lensFocusing Unit for FL Lenses Exploded Views, Parts List and Addendums. Fits 400mm, 600mm, 800mm, 1200mm lenses but they are not covered. 20Canon Repair Manuals RangefinderFor ordering information, goMap. Specifications, comparison, reviews, MTFcharts for lenses by Canon, Nikon, Sony, Pentax, Olympus, Sigma, Tamron, Carl Zeiss, etc. These can be official brochures with technical data, service manuals, press releases, user manuals, etc. Photura series, 19901992, was innovative auto zoom 35mm

rangefinder, cylindrical body like a movie camera, with zoom flash with guide number 15 meters to 25 meters built into the foldout lens cap. In downloading or viewing these files, you agree to hold James K Beard, Canon Inc. We are not responsible for the correctness of the files or any typographical or other errors that may be in any of them. The copyright ultimately resides with Canon. I believe that Canon has no objection to support of legacy Canon equipment so long as there is no charge, and third party support is limited to equipment that Canon no longer supports. However, I decided to post all the manuals that I currently have available as resources for those who maintain FL and FD mount cameras, lenses, and cameras. As such I cannot vouch for their authenticity, quality or date of publication. If anyone has better quality scans, or, preferably better quality PDF files and would like to make them generally available, please put me in touch with whoever is appropriate for the proper arrangements to post them.

<http://ibeamsc.com/images/btd-300-audio-manual.pdf>



You may order the full issues of the SPT Journal from Craig Camera here. These files get much larger in the process and the links are marked when this operation has been performed on them. I have no others in reserve or for sale. This camera advanced the state of the art as the first of a new generation of TTL SLRs. NO MANUAL AVAILABLE Thanks to Ken Slavett for this manual. Thanks to Frank Johnson of San Francisco for providing this manual. Its purpose is to retain stored data while the AA batteries are not present. This battery will last practically indefinitely if good AA batteries are kept in the camera. The BR1225 and CR1220 are readily available online very inexpensively, or you may try the standard lithium battery number CR2025 that is available at any drug store. This battery is on the third printed circuit layer on the right side of the camera as viewed from the back. If you have a better copy of any manual that you would like to share, please let me know. Some important manuals are not available here. If you have any of these manuals and would like to share them, please contact me. These include, but are not limited to, both owners manuals and repair manuals for. It'll make you feel better, won't it. If you use Pay Pal, use the link below. Use the above address for a check, M.O. or cash. EOS M and EOS R Full Frame mirrorless ranges deliver the power of DSLR in the body of a compact camera. This includes locating a Canon Service Centre, the steps to follow to arrange a repair and a selection of FAQ's to help answer any queries that you may have. We are doing everything possible to anticipate, prepare for and minimise any potential disruption. However, in order to provide suitable support to our customers where needed, we can now also accept goods in person subject to local government social distancing guidelines. There may be a delay in repair times and we do not yet know when we will be able to resume our normal service levels.

<http://iacfhouston.com/images/btc-9090-pid-temperature-controller-manual.pdf>



We apologise for any inconvenience caused and thank you for your understanding and support, as we continue to review and address the situation. We will update you as the situation develops. Therefore, Canon recommends the below cleaning instructions. The effectiveness, of alcoholbased cleaners, should be checked with the manufacturer. Wipe the device parts which users may touch, such as the numerical keys on operation panels, touch screens, covers and handles. Be sure not to drip any liquid onto these areas. However, it is recommended to use a cleaning product which contains a minimum of 60% alcohol. Please note that alcohol is a flammable liquid, therefore it should never be used near fire. If your printer is covered by the Canon European Warranty System EWS then please first check for availability and, if eligible, contact us directly to arrange the OnSite Warranty Service. If you are not eligible for OnSite service then you can locate a Canon Service Centre below. Please follow the transportation instruction as per the User Manual for your Canon product. After selecting your product, you will have access to frequently asked questions, user manuals, drivers, software and firmware downloads. There will also be other information that may be useful to you including how to contact Canon or a Canon Service Centre for telephone and email support. As there may be small local differences in the specific process per country, please check the support pages for your country of residence via our country selector. Please note that Canon retains spare parts for all our product ranges for five to seven years after the end of production, to ensure that your product can be repaired please contact the service centre prior to sending your item. If you are unable to print the form, please confirm the same information in a letter which you should send with your product. Canon Service Centres cannot provide warranty repairs without receipt of any applicable supporting documentation.

We recommend that your product is safely and securely packaged. Depending on the value of the product, you may also wish to consider insuring the shipment. If a warranty repair applies, your product will enter our standard repair process and, upon completion, the product will be dispatched to you or made available for collection. You will then have the opportunity to agree to this estimate, prior to any chargeable repair work commencing. If this estimate is rejected then, under certain circumstances, a handling fee may be applied. If applicable, and the fixed price offer is rejected, a charge to cover return shipping may be applied. For full details, please contact your selected Authorised Service Partners directly, prior to sending your product for repair. Your personal data is held securely by Canon and will not be used for any further purposes. Some of the information under this category does not qualify as personal information e.g. Settings, we will process this data to provide, maintain, protect, improve products and services and to develop new ones. For further details on Canon's Privacy Policy, please refer to our Terms and Conditions. The specific terms and

conditions of the Canon Service Centre will take precedence over all information provided on this page. You will require proof of purchase to claim under your warranty. This does not affect your statutory rights as a consumer; alternatively please contact your retailer. All repairs are subject to the terms and conditions of your warranty. Please view the warranty terms and conditions page for more information. If you would like to deliver your product yourself, please contact an appropriate Canon Service Centre directly for their opening times. The details will enable your chosen Authorised Service Partner to process your repair as quickly as possible. By using this site, you agree to our use of cookies and our Privacy Policy.

<https://kayakbranson.com/wp-content/plugins/formcraft/file-upload/server/content/files/1627189430ad62---brand-manual-template.pdf>

I have had some obvious focusing issues which I get CPS Canada to repair, and they always come back as no problems, all within spec, and they still focus incorrectly. Since Canon can't seem to help me, and I'm a nerd who likes to take stuff apart, I figured, why not learn how to do it myself. Anyone do this before. Reprint of the original service manual from Canon on this lens. Reprint of the original service manual from Canon on this lens. Reprint of the original service manual from Canon on these three lenses. Complete exploded views, parts listing, full disassembly, repair and service, and reassembly information. Reprint of the original service manual from Canon on these two lenses. Reprint of the original service manual from Canon on these lenses. Reprint of the original service manual from Canon on this lens. Another option is to go to a few camera shops, and ask questions if you're in or near Calgary or Edmonton. The manuals listed in the previous post could be a very good investment. I've done some web searching, but didn't come up with anything. When did voluptuous become voluminous LIKES 0 I send all my stuff there. They usually can't handle it so they send it to Toronto. Then Toronto sends it back to me untouched and unfixed. I am not sure about their interaction with Canada but you are a professional member. Jim I have thought about that, but heard that they don't accept repairs from out of the country. Dream On! LIKES 0 I've called numerous times. The CPS service reps never seem to answer their phones or return messages. I'm just frustrated with the entire process; it's like nobody at all at Canon Canada wants to help me. When I scratched my sensor filter nonwarranty, the comments from at least a half dozen Albertans online swayed me to use a local firm with a good reputation to replace it they apparently are also a Canon warranty service depot. They had my camera for less than 24 hours, and it's a five minute drive for me to their shop.

dispatchplus.com/ckfinder/userfiles/files/conair-haircut-kit-instruction-manual.pdf

When did voluptuous become voluminous LIKES 0 Find out their full name. Look it up in the phonebook they can't live too far away. Contact them on the side about lessons. COOKIES
DISCLAIMER This website uses cookies to improve your user experience. By using this site, you agree to our use of cookies and to our privacy policy. Privacy policy and cookie usage info.
Professionals, hobbyists, newbies and those who don't even own a camera all are welcome regardless of skill, favourite brand, gear, gender or age. Registering and usage is free. Please do not offer the downloaded file for sale only use it for personal usage. Looking for other manual For this no need registration. May be help you to repair. You could suffer a fatal electrical shock. Instead, contact your nearest service center. Note! To open downloaded files you need Acrobat reader or similar PDF reader program. In addition, Also some files are djvu so you need djvu viewer to open them. These free programs can be found on this page needed progs If you use Opera you have to disable Opera Turbo function to download file. If you cannot download this file, try it with CHROME or FIREFOX browser. Translate this page Relevant STILL CAMERA forum topics Canon 2470 lenses ultrasonic motor How to service ultrasonic motor Canon lenses Canon A2hiE videokamera keresoje nem mukodik. Sziasztok! Vasaroltam a helyi turkaloban egy Canon A2hi videokamerát. Látzolg a kamera funkcionál. Esetleg valaki nem találkozott ezzel a hibával ArpiHaver megkínált egy ilyen egyebkent

rossz, fenykepezogeppel. Minden megy, csak kep nem latszik a kijelzon. Menu mukodik, fenykepezne is, a nagy fekete semmit, vaku jo, zoom jo. Szerintem CCD gyanus, CK11102 lakozik benne szetszedtem. Velemlenyek Beszerezhető ez valahol. Valakinek fiok melyen Kosz Csaba Canon kamera Sziasztok! A Canon kamerakhoz eddig sehol sem tudtam a keszulekspecifikus alkatreszeket beszerezni.

Van esetleg valakinek ezzel kapcsolatos otlete Most konkretan egy DMMV600hoz az 590, 630, 650 is megegyezik az adott alkatresz szempontjabol keresek LCD panelt. Csak a panelra ragasztott foliakabel serult, de javithatatlan helyen es modon. Jo penzert egy mukodo bontott darabnak is orulnek, ha valakinek porosodik egy ilyen a fiokban. A gepkonyvben ezt a ket rendelési szamot talaltam Similar manuals You can write in English language into the forum not only in Hungarian. Torrington, CT.If you wish to pay with a credit card I will send you a PayPal invoice. You click on the link supplied and you can enter your credit card information. I will also accept check or money order, or PayPal. The telephone is now working. Please give me the items you wish to purchase and yourI ask that you be patient with me as John refused to All are GBC spiral bound for easy use. They are the best publications available, but we cannot assume responsibility for your success or failure using them, nor for the sometimesrequired special tools. Prices quoted do not include shipping charges. Larger books and multiple orders will generally be shipped ground UPS. Shipping charges on overseas orders will be verified before shipment. On credit card orders, trust me to ship the least expensive, yet expeditious, method. I also offer hundreds of original repair manuals in dozens of brands of photographic equipment. You can start your browsing for those manuals Here Search engine cached pages are probably not current. Prices do not include shipping. A complete reference, with information on cleaners, adhesives, etc.; extensive charts and databases on everything from filter sizes to lens element designs, flash data, color temperatures, lamps, drills, belt sizes, etc., etc. And a host of helpful bits of information for repairmen and tinkerers. Faithful reprint of the original factory services manuals on these two cameras. They share several parts in common, hence the combination.

The Colorflex was also known as the Agfaflex I in the U.S.; the Ambiflex was also marketed as the Agfaflex IV. Includes schematics, exploded views, parts listing; complete service and adjustment information. Covers Airequipt models in the 100, 200, 300, 400 and 900 series. Revised to include faithful reprints of the original c. 1951 Ampro service manual on the Stylist series of projectors, as well as the revised 1960 service manual from Gralex after they took over the line; and the original c. 1954 Ampro manual on the Premier series. Full schematics, exploded views, closeup views of inner workings of projector. Full service information.Reprint of the original service manual from GAF on these camera models. Includes exploded views, schematics, full service information. Spiral bound Faithful reprint of the factory original. Detailed service, repair and adjustment. No exploded views or parts list. Covers nearly 60 projectors under the Ansco, GAF, Sears, Viceroy, Wards and Emdeko brands. Reprint of the original service manual from GAF on these projectors. Includes Sawyers models 600, 700, 600A, 700A, 707Q, 707AQ; Wards 666, 777Q, 777AQ; and Eaton Optima Superb. Includes extensive electrical schematics, as well as detailed disassembly, reassembly, adjustment and repair. Includes exloded views, parts listing, complete repair information. Includes operation of equipment, as well as complete service and maintenance information, not to mention demolition and destruction requirements. TMs are often more informative than the usual manufacturers service manuals. Full exploded views, schematics, parts listings, service and repair information. Faithful reprint of the original factory repair manual. Includes exploded views, parts listing, wiring, complete service and adjustment information. Covers models 253A, 253AR, 253AX, 253B, 253BRX, 253RX. Complete service and repair, as well as exploded views, parts listing. Reprint of the original factory service manual on these projectors.

Reprint of the original factory service manual on this series; includes 456A, 456Z, 456X, 456XF,

456XP. Includes exploded views, parts list, full service and repair information. Reprint of the original factory service manual on this projector. Includes exploded views, parts listing, full service and adjustment information. Includes exploded views, parts listing, full service and adjustment information. Faithful reprint of the original service manual on this projector, with supplemental material for the 1568B. Includes full parts listing, exploded views, electrical schematics, full service information. Faithful reprint of the original factory service manual on this projector. Includes full parts listing, exploded views, electrical schematics, troubleshooting guide, full service and repair information. Faithful reprint of the original factory service and parts manual; approx. 50pp, large format, fully illus. Reprint of the original factory service manual on this series; includes LX30, MX43, MX45, MX60, QX80, QX95. Covers models 815A, 820A, 825A, 830A, 840A, 850A. Includes complete detailed exploded views as well as various changes through the models; and service and adjustment information. Full exploded views, circuits, etc.; detailed service and repair information. Presented in Paillard's typical convoluted sequence. Reprint of the original US Air Force Handbook and Overhaul Instructions for this camera, 1951. Faithful reprint of the factory original service manual on this flash, in multiple languages English, German and French. Complete function descriptions, illustrated disassembly, testing and adjustment, electrical and schematics. Faithful reprint of original Bronica factory service manual on these two similar early Bronica models. Complete exploded views, parts, service and adjustment information. Reprint of the original factory repair manual and parts list on these two models and accessories.

In addition to full exploded views, parts list and complete service information on the two cameras, also includes service information on 250mm lens, Bellows E, finders, motor drive, extension tubes. Reprint of the original factory repair manual and parts list. Reprint of the original factory manual. Full exploded views, parts listing and detailed service on the IVS2; special section on upgraded model. Also includes parts listings for most other Canon rf models, and detailed exploded views of VT, VT Deluxe, VIT, VIL, Model P, and Canon lenses. Reprint of the original factory repair manual. Extensive exploded views, showing sequence of assembly and disassembly; detailed information on opening the camera and troubleshooting. Reprinted from original Canon factory manuals, this is a compilation of the variety of Canonet models; includes Canonet 1, 2 and 3 1962; the New Canonet 28 1972; the Canonet QL 17, 19 and 25 1971; and the GIII 17, 19 1972. Complete exploded views, parts lists, schematics, tech updates, full service and repair information. Complete parts and service manual for these two compact half-frame 35mm cameras. Includes exploded views, parts listings, full service and adjustment information. Complete parts and service manual for these two compact springwound 35mm cameras. Faithful reprint of the Canon factory original service manuals on these two models. Full disassembly and reassembly information, as well as exploded views, parts listing, repair, adjustment and service information. Faithful reprint of the Canon factory original manual, detailing mechanical and electrical repairs and service for this series of EOS cameras. Faithful reprint of the original Canon factory manual on this camera in the US as the Rebel G; in Europe as the EOS 500N; and in Japan as the EOS KISS. Complete service manual; includes updates. Reprint of the original Canon factory repair manual; covers the TLb camera and both early and later versions of the Canon FTb.

Faithful reprint of the original Canon factory repair manual on this camera. Reprint of the original service manual from Canon on these cameras. Includes Photura, Epoca, Autoboy Jet, Photura Caption and Epoca Caption models. Faithful reprint of the factory original repair guide to this camera. Full exploded views, disassembly, adjustment and repair, reassembly. Electronic checking, etc. Full exploded views, circuitry diagrams, full mechanical and electrical adjustment and service. Complete parts and service manual covering this piece of equipment. Complete parts and service manual covering the F1 Motor Drive Unit; Film Chamber 250; Remote Switch MD; Film Loader 250; Battery Case and Battery Connector. Complete parts and service manual covering the F1 Booster T Finder, and the Servo EE Finder. Exploded views, wiring diagrams, full service and

adjustment information. Faithful reprint of the original service manual from Canon on this camera. Reprint of the original service manual from Canon on this camera. Reprint of the original service manual from Canon on this electronic flash. Reprint of the original service manual from Canon on these electronic flash units. Reprint of the original service manual from Canon on this lens. Reprint of the original service manual from Canon on this lens. Reprint of the original service manual from Canon on these lenses. Reprint of the original service manual from Canon on this lens. Reprint of the original Chinon factory service manual on these cameras. Faithful reprint of the original Chinon factory service manual on this single lens reflex camera. Faithful reprint of the original Chinon factory service manual on this sophisticated camera. Reprint of the original Chinon factory service manual on this camera. Faithful reprint of the original Chinon factory service manual on this movie camera. Faithful reprint of the original Chinon factory service manual on these movie cameras.

<http://gbb.global/blog/bosch-home-alarm-manual>