



File Name: Canon pixma mx300 manual pdf.pdf

Size: 2986 KB

Type: PDF, ePub, eBook

Category: Book

Uploaded: 28 May 2019, 17:50 PM

Rating: 4.6/5 from 601 votes.

Download Now!

Please check the box below to proceed.



I'm not a robot



reCAPTCHA
Privacy - Terms

Book Descriptions:

Canon pixma mx300 manual pdf

Canon



Photo All-in-One

PIXMA MP600

Quick Start Guide



For further information about extending your Canon service and support, call 18003852155, or visit our Web site at www.canonesp.com. CarePAK must be purchased during your product's warranty period. All statements, technical information and recommendations in this manual and in any guides or related documents are believed reliable, but. Lights or flashes green to indicate the power status. Before turning on the machine, make sure the Document Cover is closed. 2 COPY button Switches the machine to copy mode. Also changes the mode when entering characters. 16 OK button Finalizes your selection for the menu or setting item. Dismisses the error message and resumes the machine's normal operation after resolving a printing error or removing jammed paper. You can specify the various print settings in copy mode, or page size and media type settings in fax mode by using these setting items. Turning on the Machine Before turning on the machine, confirm the following. The FINE Cartridges are installed properly. If you are using the machine connected to a computer, confirm also the following. The machine is connected to your computer or a compatible device. Original Document Requirements The original documents you load on the Platen Glass for copying, scanning, or faxing must meet these requirements Document type Size W x L Thickness Loading Original Documents. Using Specialty Media Canon recommends that you use Canon genuine media to ensure optimal print quality. Photo Quality Media Glossy Photo Paper Matte Photo Paper. You may not be able to purchase some Canon genuine papers depending on the country or region of purchase. When printing on both sides, we recommend Canon's Super White Paper DoubleSided. Put your finger in the rounded indent of the Paper Support and pull it out until it stops. 3 Open the Paper Output Tray. Put your finger in the rounded indent beside the Paper Output Tray and open it gently. Load with the address side facing UP and the rear flaps DOWN on the left. <http://www.doctorbiokon.com/userfiles/dtr220-05-manual.xml>

- canon pixma mx300 manual pdf, canon pixma mx300 manual pdf, canon pixma mx340 manual pdf, canon pixma mx300 manual pdf download, canon pixma mx300 manual pdf free, canon pixma mx300 manual pdf software, canon pixma mx300 manual pdf downloads.

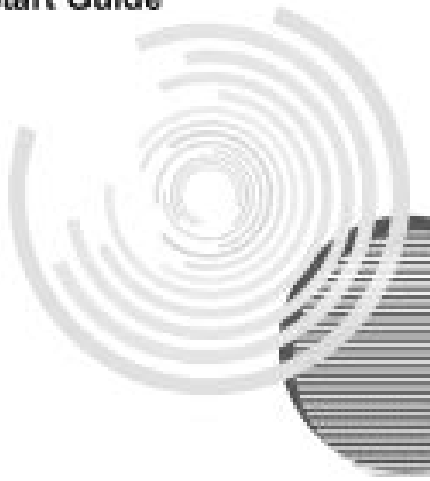
Canon



Office All-in-One

PIXMA MX300 series

Quick Start Guide



Up to 10 envelopes can be loaded at once. 2 Pinch the Paper Guide and slide it against the left side of the envelope. Load the paper. 1 Load the paper against the right side of the Rear Tray with the print side facing UP. 2 Pinch the Paper Guide and slide it against the left side of the paper stack. Turn on the machine. See “Turning the Machine On and Off” on page 6. Press the COPY button. Load paper. See “Loading Printing Paper” on page 9. Load the original on the Platen Glass. See “Loading Original Documents”. MEDIA TYPE Select the media type of the loaded paper. Select Print on the application software’s File menu. Make sure that Canon XXX Printer where “XXX” is your machine’s name is selected in Select Printer, and click Preferences or Properties. For details, refer to the instruction manual of your application. The steps described in this section are for printing in Mac Turn on the machine and load the paper in the machine. See “Turning the Machine On and Off”. If you are scanning printed text, you can use the OCR Optical Character Recognition software to convert it to text data. Scanning Methods You can select from the various scanning methods. Note Depending on the model or brand of your device, you may have to select a print mode compliant with PictBridge before connecting the device. You may also have to turn on the device or select Play mode manually after connecting the device to the machine. Note In the following description, names of setting items are given according to those used in Canon brand PictBridge compliant devices. Setting item names may be different depending on the brand or model of your device. When you select On, the shooting information is used to print the optimized image. If you are using a Canonbrand PictBridge compliant device, the following additional options may be available, depending on the model. Set the print settings to Default on the PictBridge compliant device when you want to print according to the settings on the

machine.<https://fapobenas.com/assets/dtr-8000-manual.xml>

Canon



Photo All-in-One

PIXMA MP600

Quick Start Guide



Displaying the PictBridge Settings Screen and Specifying the Settings Turn on the machine. Connect the machine correctly. The machine may not operate properly. Connecting a Telephone or Answering Machine via a Computer A Computer B Telephone or Answering machine Users in the UK If the connector of the external device cannot be connected to the jack on the machine, you will need to purchase a B.T. These are examples and are not guaranteed to suit every connecting conditions. For details, refer to the instruction manual supplied with the network device control devices such as an xDSL modem, terminal adapter, or dialup router you are connecting to this machine. ROTARY PULSE Suitable for pulse dialing. TOUCH TONE Suitable for tone dialing. Note You cannot use ROTARY PULSE depending on the country or region of purchase. Such sender information is called Transmit Terminal Identification, or TTI. You can register your TTI in this machine, so that the recipient of your fax will know who sent it, and when it was sent. As long as the date and time is set accurately on your computer, you do not need to set it on the machine. UNIT NAME Press the Numeric buttons to enter your name max. 24 characters, including spaces, then press the OK button. Note For details on how to enter or delete characters, see "Guidelines for Entering Numbers, Letters, and Symbols". To dial the number, press the Coded Dial button, enter the twodigit code assigned to that number. Changing or Deleting a Registered Information To Change a Registered Number or Name Follow the procedures from step 1 to 3 under "Registering Coded Speed Dialing" on page 37. Press the Numeric buttons to enter the new number max. YES Prints the list with the destination name DESTINATION ID in alphabetical order. NO Prints the list with the registered entries in numerical order. Faxing. Step 1 Load the original to send on the Platen Glass. See "Loading Original Documents" on page 8. Step 2 Adjust the fax quality and scan contrast.

See "Adjusting the Scan Contrast or the Image Quality Fax Resolution". Increasing the scan contrast setting further blackens dark areas and whitens bright areas, whereas decreasing the contrast setting reduces the difference between bright and dark areas. Memory sending Dialing the coded

speed dial Redialing Sending Faxes Memory Sending Prepare for faxing. 1 Turn on the machine. 2 Load the original on the Platen Glass. Note For details on the types and conditions of originals which you can fax, see "Loading Original Documents". See "Prepare for faxing." on page 42. Press the Coded Dial button. Press the Numeric buttons to enter the twodigit code 00 19 assigned to the number you want to dial.For details, refer to the FAX Driver Guide on screen manual. See "Selecting the Receive Mode" on page 45. Step 2 Load A4, Letter, or Legalsized paper. See "Loading Paper" on page 12. Step 3 Confirm the paper settings and adjust them as needed. Note You will not be able to answer the call. If You Are Using a Single Telephone Line for Faxes and Voice Calls and Use Voice Calls More Frequently Select TEL PRIORITY MODE. The machine can be set to receive faxes automatically after the telephone rings for a specified length of time. Pick up the handset to answer the call. C Fax The fax is received automatically when the machine detects the registered fax ring pattern. Press the OK button. Note For details on the receive modes, see "Selecting the Receive Mode" on page 45. Press the OK button. Important If paper of size other than A4, Letter or Legal is loaded, the received faxes will not be printed and "RECEIVED IN MEMORY". Send or print necessary documents before disconnecting the power cord. Note When confirming, printing, or deleting a document stored in memory, you specify it by its transaction number. Refer to the pages indicated for more details.

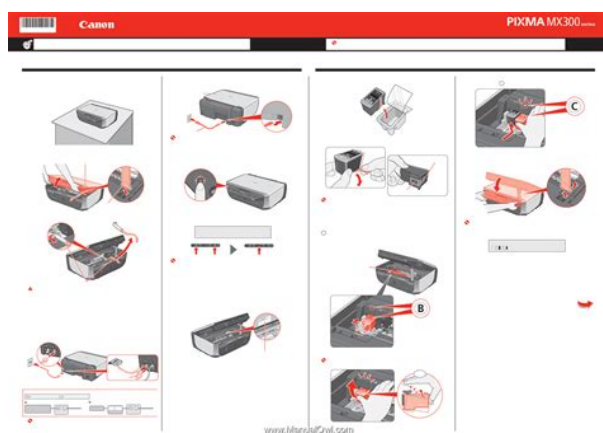


<https://ayurvedia.ch/bosch-logixx-10-tumble-dryer-manual>

Report Or List Activity report Coded speed dial list User's data list Memory list TX Transmission report Confirms whether a transmission was completed successfully. See "Registering Sender Information" on page 32. Printing the User's Data List Press the FAX button, then press the Menu button.Print the nozzle check pattern to confirm the condition of the nozzles and then perform Print Head Cleaning. Make sure that the machine is turned on, then load a sheet of A4 or Lettersized plain paper in the Rear Tray. Open the Paper Output Tray, then set the Paper Thickness Lever. Note The nozzle check pattern will not be printed correctly if there is not enough ink. Replace the FINE Cartridge if the remaining amount of ink is insufficient. See "Replacing a FINE Cartridge". Cleaning unclogs the nozzles and restores the print head condition. Note that cleaning the Print Head causes

used ink to be absorbed in the ink absorber. Cleaning the Print Head consumes ink, so perform Print Head Cleaning only when necessary. Note that cleaning the Print Head causes used ink to be absorbed in the ink absorber. Print Head Deep Cleaning consumes more ink than standard Print Head Cleaning, so perform this procedure only when necessary. Make sure that the machine is turned on, then load two sheets of A4 or Lettersized plain paper in the Rear Tray. Open the Paper Output Tray, then set the Paper Thickness Lever. When ink runs out or other errors occur, an error message is displayed on the LCD to inform you of the error. Note You can also display the printer status monitor by clicking Canon XXX Printer where “XXX” is your machine’s name which appears on the taskbar during printing. Open the Canon IJ Printer Utility. However the print quality may be reduced compared to when printing with both cartridges. Canon recommends to use new FINE cartridges in order to obtain optimum qualities. Do not touch the metallic parts inside the machine.

<https://gingersgarden.com/images/bumper-sticker-for-manual-cars.pdf>



Important If the Scanning Unit Printer Cover is left open for more than 10 minutes, the FINE Cartridge Holder moves to the right. The Black FINE Cartridge should be installed into the left slot and the Color FINE Cartridge should be into the right slot 2 Push up the FINE Cartridge until it clicks into place. Caution Do not use tissue paper, paper towels, or similar materials for cleaning. Paper tissue powders or fine threads may remain inside the machine and cause problems such as a blocked Print Head and poor printing results. Rotate the roller A manually as you clean it. Do not touch the roller with your fingers; rotate it with the cotton swab. If this does not solve the problem, contact your Canon service representative. Routine Maintenance. If the inside of the machine becomes dirty, printed paper may get dirty, so we recommend performing cleaning regularly. Important Do not perform any other operation while the bottom plate is being cleaned. Caution Be sure to turn off the power and disconnect the power cord before cleaning the machine. Routine Maintenance. Note This section mainly describes the methods of machine operation for troubleshooting. To handle problems using your computer, refer to “Troubleshooting” in the User’s Guide onscreen manual. For details on how to view the onscreen manuals, see “Reading the Onscreen Manuals”. Please be advised that Canon shall not be liable for any malfunction or trouble caused by continuation of printing under the ink out condition. Ink has run out. After a while, plug the power cord of the machine back in, and then turn on the machine. If the same error occurs, contact your Canon service representative. Troubleshooting Action The other party’s fax machine is out of paper or its memory is full. If other disks are displayed, there is a problem with the Setup CD ROM. Contact your Canon service representative. Do the page size and media type settings match the size and type of the loaded paper.

<https://www.arquetopia.org/images/bumper-sticker-manual-transmission.pdf>



When these settings are incorrect, you cannot obtain a proper print result. If you are printing a photograph or an illustration, incorrect paper type setting may reduce the quality of printout color. Print Head nozzles are clogged. The media is loaded with the wrong side facing upwards. Print Head is misaligned. White Streaks Cause Print Head nozzles are clogged. See "Media Types You Cannot Use" on page 11. Action Clean the paper feed roller. Cleaning the paper feed roller will wear the roller, so perform this procedure only when necessary. Inappropriate Paper Thickness Lever setting. Printing graphics with the intensity setting set too high. Printing beyond the recommended printing area. Action For Plain Paper Turn the paper over and reload it to print on the other side. Leaving the paper loaded in the Rear Tray for a long time may cause the paper to curl. Print Head is misaligned. The Print Result Not Satisfactory When Copying Cause The original document is not loaded correctly. The original document is not loaded with the side to be copied face down. The original document is a printout from this machine. Paper Does Not Feed Properly Cause Printing on inappropriate type of paper. Paper feed roller is dirty. Paper not loaded properly. Too much paper loaded. Foreign object in the Rear Tray. Envelopes not prepared nor loaded properly. Do not load credit cardsized paper in landscape orientation. Make sure that a port named USBnnn where "n" is a number with Canon XXX Printer appearing in the Printer column is selected for Print to the following ports. Machine is not connected properly. For errors on nonCanon PictBridge compliant devices, check the error message on the LCD and take the appropriate action to clear the error. For details, see "An Error Message Is Displayed on the LCD". If the same error occurs, contact your Canon service representative. Action Follow the procedure described in your setup sheet to reinstall the MP Drivers.

Machine Does Not Switch Automatically between Voice and Fax Calls Cause The receive mode displayed on the bottom left of the LCD is FAXONLY. The sender's fax machine is not operating normally. Problems Sending Faxes Cannot Send a Fax Cause The machine is not powered on. The image quality setting or the scan contrast setting is not suitable for the document. This sheet includes instructions for setting up your machine and getting it ready for use. Quick Start Guide This guide Read this guide when starting to use the machine. After following instructions in your setup sheet, we recommend you read this guide to familiarize yourself with the basic operation of some of the main functions that can be performed on your machine. Default Off No printing, Date, File No., Both, Off Trimming Default Off No trimming, On follow camera's setting, Off. Additional System Requirements for OnScreen Manuals Browser Windows HTML Help Viewer Note Microsoft Internet Explorer 5.0 or later must be. Do not attempt to use the machine in any way not described in this manual. Warning This product emits low level magnetic flux. If you use a cardiac pacemaker and feel abnormalities, please move away from this product and consult your doctor. Never use flammable solvents such as alcohol, benzene or thinners. If flammable solvents come in contact with electrical components inside the machine, it could cause a fire or electric shock. Always unplug the machine from the power outlet before cleaning the machine. Do not place any object on the machine. Do not place metal objects paper clips, staples, etc. or containers of flammable solvents alcohol, thinners,

etc. on top of the machine. The list provided is nonexhaustive. When in doubt, check with a legal representative in your jurisdiction. Users should contact their local authorized Canon Facsimile Service Dealer for the servicing of equipment. Safety Precautions.

<http://eduomania.com/wp-content/plugins/formcraft/file-upload/server/content/files/16271f2a494f23--braun-thermoscan-6012-user-manual.pdf>

The Ringer Equivalence Number is an indication of the maximum number of devices allowed to be connected to a telephone interface. The termination on an interface may consist of any combination of devices subject only to the requirement that the sum of the RENs of all the devices does not exceed five. It indicates no endorsement of the product by Telecom, nor does it provide any sort of warranty. Above all, it provides no assurance that any item will work correctly in all respects with another item of Telepermitted equipment of a different make or model, nor does it imply that any product is compatible with all of Telecom's network services. This page requires Javascript. Modify your browsers settings to allow Javascript to execute. See your browsers documentation for specific instructions. To install your download click on the name of the downloaded file. Access your account, or create a new account, click here to get started. The driver may be included in your OS or you may not need a driver. Recommended Drivers File Name Date File Size Optional Drivers File Name Date File Size Recommended Software File Name Date File Size Optional Software File Name Date File Size Recommended Manuals File Name Date File Size Optional Manuals File Name Date File Size Warranty repair or replacement shall not extend the original warranty period of the Product. A dated proof of purchase is required at the time of warranty service. A copy of your dated bill of sale will satisfy this requirement. This warranty does not cover any accessories, or any consumables, such as paper or ink cartridges, as to which there shall be no warranty or replacement. Repairs of such Canon brand peripheral equipment shall be governed by the terms of the Separate Warranty. The sole warranty, if any, with respect to such nonCanon brand items is given by the manufacturer or producer thereof.

cgalgeria-dubai.com/userfiles/files/canon-speedlite-580ex-ii-user-manual.pdf

Without limiting the foregoing, dropping the Product, scratches, and abrasions will be presumed to have resulted from misuse, abuse or failure to operate the Product as set forth in the users manual or other documentation for the Product. The name and telephone number of the ASFs near you may be obtained from Canon USAs Web site at www.canontechsupport.com or by calling the Canon USA Customer Care Center at 18008284040, or any time while speaking to a technical support person. A Product covered by this limited warranty will be repaired or exchanged, as determined by Canon USA, and returned without charge by the ASF. If the problem cannot be corrected over the telephone, and you elect the InstantExchange option, a reference number will be issued to you. You will be asked for the Product serial number and other information pertaining to your Product and for a ship to location for the replacement Product must include street address. After receipt of the replacement Product with instructions and a prepaid waybill, follow the enclosed instructions on how to ship your product to the Canon USA repair facility. Your Product must be returned in the shipping carton in which the replacement Product was packed and include the reference number, A COPY OF YOUR DATED PROOF OF PURCHASE BILL OF SALE, and a complete explanation of the problem. Canon USA does not guarantee same day shipment in the event of the occurrence of factors beyond its reasonable control. The replacement Product you receive may be a refurbished or reconditioned unit and will be covered for the balance of the period remaining on your original limited warranty. Cross Sell Sheet. Easy Setup Instructions. Quick Start Guide Scroll down to easily select items to add to your shopping cart for a faster, easier checkout. Visit the Canon Online Store Perfect for creating any type of Greeting Card with an extensive variety of downloadable templates from the Canon Inc. Glossy finish for impressive photos.

Genuine Canon Paper for quality images. An economical choice for great prints. An economical choice for great prints. Optimize output resolution to create nearphotographic images. This paper is great when you want highquality color output to produce winning reports and eyecatching graphics. Use with genuine Canon Photo Inks for true photoquality output. Package includes 100 sheets. Great for portrait and wedding and fine art photography prints. Package includes 50 sheets. Simply print your photos on the included 2 sided paper, slide the pages easily into the album, and share your memories! Simply print your photos on the included 2 sided paper, slide the pages easily into the album, and share your memories! This paper yields a glossy finish and exceptionally right color, giving your images the look and feel of a traditional photograph. Package includes 120 sheets. This paper yields a glossy finish and exceptionally right color, giving your images the look and feel of a traditional photograph. Package includes 50 sheets. This paper yields a glossy finish and exceptionally right color, giving your images the look and feel of a traditional photograph. Package includes 20 sheets. This paper yields a glossy finish and exceptionally right color, giving your images the look and feel of a traditional photograph. Package includes 20 sheets. Learn about the technology behind the paper. Learn about the technology behind the paper. Learn about the technology behind the paper. Learn about the technology behind the paper. Learn about the technology behind the paper. Package includes 15 sheets. High quality photos print right onto a sticker sheet, so just peel and stick. 16 stickers per sheet. Photo Paper Plus SemiGloss produces vibrant images with low glare and a soft glossy finish for photo lab quality prints right at home.

Photo Paper Plus SemiGloss produces vibrant images with low glare and a soft glossy finish for photo lab quality prints right at home. Photo Paper Plus SemiGloss produces vibrant images with low glare and a soft glossy finish for photo lab quality prints right at home. Photo Paper Plus SemiGloss produces vibrant images with low glare and a soft glossy finish for photo lab quality prints right at home. Photo Paper Plus SemiGloss produces vibrant images with low glare and a soft glossy finish for photo lab quality prints right at home. The following FINE Cartridges are compatible with this product. Help Us Help You. Page 3 series Quick Start Guide Copyright. This manual is copyrighted by Canon U.S.A., Inc. with all. Page 5 Table of Contents. Before Using the Machine. 2 The Print Result Not Satisfactory Operation Panel Press the Menu button to display the menu items. You can specify the special copy settings, various fax. Menu button AUTO PRINT RX Page 10 Turning the Machine On and Off. Turn on the machine before printing. This section describes how to load the original document on the Platen Glass. This section describes how to load printing paper in the Rear Tray. Page 19 2 Load the envelopes. Making Copies. This section describes the basic procedure to make copies. This section describes procedure for basic printing. Printing with Windows Depending on your application program. Page 25 Printing with Macintosh Depending on your application program, operations may differ. For details, refer to the instruction manual You can scan images from the machine to a computer without printing them and save them in Compliant Device. You can connect a PictBridge compliant device such as a digital camera, camcorder. Page 28 2 Connect the PictBridge compliant device to the machine. Page 29 About PictBridge Print Settings Page 30 z Layout Setting Page 31 Setting on the Machine Page 32 Faxing Faxing. Preparing the Machine for Fax. Typical examples of connecting the machine are described below.

A fax you receive may have information, such as the sender's name or the company name, the. Page 37 Guidelines for Entering Numbers, Letters, and Symbols Page 38 Entering the Date and Time Page 39 5 Press the OK button. Step 1 Page 46 Sending Faxes Page 49 Receiving Faxes Step 1 Page 51 Note Page 52 z If You Subscribe to a Distinctive Ring Pattern Detection DRPD Service Page 53 Setting the Receive Mode Page 54 Changing the Print Settings Page 55 Using Other Useful Receiving Functions Page 56 Document Stored in Memory Page 58 Checking a Document's Details in Memory Page 59 Summary of Reports and Lists. The table below shows the reports and lists that can be printed from the machine. Page 60 User's Data List Page 61 Routine Maintenance Routine

Maintenance. When Printing Becomes Faint or Colors Are Incorrect. When printing becomes faint or colors are incorrect, the print. Page 62 Printing the Nozzle Check Pattern. Print the nozzle check pattern to determine whether the ink ejects properly from the print. Page 63 Examining the Nozzle Check Pattern. Examine the nozzle check pattern, and perform cleaning if necessary. The nozzle check pattern. Page 64 Print Head Cleaning. Clean the Print Head if lines are missing or if white streaks appear in the printed nozzle. Page 65 Print Head Deep Cleaning. If print quality does not improve by standard Print Head Cleaning, try Print Head Deep Cleaning. Page 66 Aligning the Print Head. If ruled lines are printed misaligned or print results are otherwise unsatisfactory, adjust the print head. Page 67 NotePage 68 Replacing a FINE Cartridge. This section explains the way to confirm the ink status and the procedure to replace FINE. Page 69 The function for detecting the remaining inkPage 70 Follow the procedure below to open each of the confirmation screens. Page 74 Keeping the Best Printing Results. To avoid drying of the Print Head and clogging of the nozzles, note the following. Page 75 Cleaning Your Machine.

This section describes the cleaning procedure that is needed to maintain your machine. Page 78 Cleaning the Protrusions Inside the MachinePage 79 Troubleshooting Troubleshooting. This section describes troubleshooting tips for problems you may encounter when using theThis section mainly describes. Page 80 An Error Message Is Displayed on the LCD. If an error message is displayed on the LCD, take the corresponding. Page 81 Message Action. CHECK PRINTER Turn off the machine, and unplug the power cord of the machine from the power. Page 82 Message Action. NO RX PAPER The other party's fax machine is out of paper or its memory is full. Page 83 An Unintended Language Is Displayed on the LCDThe language you want to be displayed Select the language. Page 84 Cannot Install the MP DriversInstallation procedure not followed Follow the procedure described in your setup sheet for proper installation. If the print result is not satisfactory, confirm the paper and print quality settings first. FINE Cartridge is not installed properly. Page 88 Printed Paper Curls or Has Ink BlotsPaper is too thin. When printing data with high color. Page 89 Cause Action. Paper is curled. For Plain PaperPage 90 Colors Are Uneven or StreakedPrint Head nozzles are clogged. See "When Printing Becomes Faint or Colors. Page 91 Cause Action. The machine is not ready. Check if the Power lamp is lit green. Paper jammed in the Paper Output Slot Remove the paper following the procedure below. The machine is not ready. Confirm. Page 94 Error No. 300 Is DisplayedThe machine is not ready. Confirm that the Power lamp is lit. Page 95 Error No. 2002 Is DisplayedPictBridge compliant device is See "UNSUPPORTED USB HUB" in "An Error Message. Page 96 Error Message ActionPage 97 Cause ActionPage 98 Repeated Errors Occur When You Receive a FaxThe telephone line condition or the Reduce the reception. Page 99 Cannot Send a Fax ClearlyThe document is not loaded correctly, z Remove the document, then reload.

Page 100 Appendix Appendix. How to Use the Documentation ProvidedFor detailed instructions on installing the onscreen manuals, refer to your setup sheet. You can view. Page 102 SpecificationsPage 103 Fax Specifications. Applicable line Public Switched Telephone Network PSTN. Data. Page 104 Camera Direct Print PictBridgeConform to the operating system's requirements when higher than those given here. Operating System Windows. Page 106 Safety Precautions Safety Precautions. Please read the safety warnings and cautions provided in this manual to ensure that you use the. Page 107 Cleaning the machine Use a damp cloth to clean the machine. Never usePage 108 Working around the Never put your hands or fingers in the machine while it is printing. Images. It may be unlawful to make copies of, scan. Page 110 Users in the U.S.A. Order InformationPage 111 Warning. The Telephone Consumer Protection Act of 1991 makes it unlawful for any person to use a computer or. Page 112 refurbished Product, as determined by the Canon USA repair facility or the ASF. Warranty repair orPage 113 PROPERTY AND TO OTHERS AND THEIR PROPERTY ARISING OUT OF THE POSSESSION, Notice. This equipment meets the applicable Industry Canada technical specifications. Page 116 Users in New Zealand. The grant of a Telepermit for any item of terminal equipment indicates only that Telecom has. Page 117 Index

Index. A Printing from Your ComputerAppendix 96B Printing Photographs Directly from a
CompliantHelp Us Help You. Page 120 Office AllInOneThe following FINE Cartridges are compatible
with this product. You may find documents other than justWe keep our list of direct Canon PIXMA
MX300 driver and firmware links uptodate so they are easy to find when you need them. In this
document are contains instructions and explanations on everything from setting up the device for
the first time for users who still didn't understand about basic function of the camera. Canon Pixma
MX300 user manual Files with a.

<https://skazkina.com/ru/bosch-logixx-10-tumble-dryer-manual>