

GPS Anti-theft Alarm System
(GPS+GSM+SMS/GPRS)

User Manual



File Name: Car gps tracker user manual.pdf

Size: 3968 KB

Type: PDF, ePub, eBook

Category: Book

Uploaded: 29 May 2019, 21:58 PM

Rating: 4.6/5 from 611 votes.

Download Now!

Please check the box below to proceed.



I'm not a robot



reCAPTCHA
Privacy - Terms

Thank you for purchasing the tracker. This manual shows how to operate the device smoothly and correctly. Make sure to read this manual carefully before using this product. Please note that specification and information are subject to changes without prior notice in this manual. Any change will be integrated in the latest release.
1. Accessories:
4Pin Power cable, screw, user manual, Product accessories are subject to the material object.

Book Descriptions:

Car gps tracker user manual

GPS Anti-theft Alarm System (GPS+GSM+SMS/GPRS)

User Manual



Thank you for purchasing the tracker. This manual shows how to operate the device smoothly and correctly. Make sure to read this manual carefully before using this product. Please note that specification and information are subject to changes without prior notice in this manual. Any change will be integrated in the latest release.

1. Accessories:

4Pin Power cable, screw, user manual. Product accessories are subject to the material object.

Model302 User Manual. Preface. Thank you for purchasing the tracker. This manual shows how to operate the device. Make sure to read this manual carefully before using this. Any change will be integrated in the latest release. The Applications. 4. Hardware Description. 4. Accessories. 5. Specifications. 6. Operating Instructions. 6. Cautions. 29. It can track and monitor. Used widely for vehicle and other moving objects tracking. Remote controller antenna. No. GPS Antenna. GSM Antenna. Microphone. Harness. Shock sensor. Option for both model A and. Siren. Remote controller. Option for model B ONLY. Option for both model A and. Content. Network. Band. GPS Sensitivity. GPS Accuracy. GPS Start time. Cold status 45s. Warm status 35s. Hot status 1s. Voltage. Storage Temp. Chargeable 3.7V 350mAh Polymer Li Battery. Operation Temp. Humidity. Note The orange wire can be connected to the original car horn; it can also be. Connect the positive and negative wire, red and black ones, with 12V or 24V car power. LED Indicator Type. Red LED. Green LED. Behavior. Flash slowly, 1 time. No GSM signal. GSM mode with good reception. GPRS mode. Fix to satellites. Lost fix to satellites. For example send SMS "begin123456", it will reply "begin ok". No quotation marks "" For example send SMS "password123456 888888" to the unit. If succeeded, Up to 5 numbers can be authorized. You should authorize your number in. And the SMS will include. Tracker will report a. Note The interval must not less than 10s. The GPS data. For example No. 113, Guankou 2nd Rd, Nantou. Nanshan district, Shenzhen, Guangdong, china. If the tracker cannot establish a solid GPS Fix, it will calculate its location using. CellID GSM locating, Location reports will include the GPS coordinates of the last. Track" menu of web tracking platform www.gpstrackerxy.com will enable you to see. GPRS mode. Accuracy of LBS depends on the distance to the nearest GSM Network. Cell Tower or Base Station. <http://www.tienhung.com.vn/userfiles/dyson-owners-manual-dc39.xml>

- car gps tracker user manual, gps vehicle tracker user manual version 2.1, gps vehicle tracker user manual francais version 2.1, gps vehicle tracker user manual francais,

gps vehicle tracker user manual, gps vehicle tracking user manual, gt02a vehicle gps tracker user manual, gps vehicle tracker gt005 user manual, gps vehicle tracker gt06 user manual, car gps tracker user manual, car gps tracker user manual pdf, car gps tracker user manual guide, car gps tracker user manual bike review, car gps tracker user manual download.

GPS Anti-theft Alarm System (GPS+GSM+SMS/GPRS)

User Manual



Thank you for purchasing the tracker. This manual shows how to operate the device smoothly and correctly. Make sure to read this manual carefully before using this product. Please note that specification and information are subject to changes without prior notice in this manual. Any change will be integrated in the latest release.

1. Accessories:

4Pin Power cable, screw, user manual, Product accessories are subject to the material object.

Note This feature can be used normally in most areas according to the signal of GSM. Please check gprs" that means device does not work under GPRS mode. For Example send SMS "load123456 20110425" to the service provider of the SIM card in the tracker. Take china mobile for example, mobile users can send "ye" to china mobile number and execute. MobileForward balance message to mobile phone. Send ye out to 10086. TrackerSend balance back. Received Balance message. Received ye from number in theTo active this functions, sendAnd it will remain immobile state until next command toButton. FunctionDescriptions. Press for 0.5 second, the siren will beep one time. Press for 0.5 second, the siren will beep two times. Press for 0.5 second when it is in disarm state, the siren willPress for 3 seconds, Tracker will send SOS alert to authorized phonePress for 0.5 second when it is in arm state, siren will beep 10It will replyUser must stop the engine, that is ACC is lower voltage.Sending SMS. You will set up arm status fail if thePressIt won't alarm if the door is open and sensor is vibrated and the engine is started whenPressPressPressAlarm SMS will be sent 5 times by default.It will stop sending such a SMS when anySend SMS command. Note 5 areas at most and the distance between two points can't be less than the totalSMS when goes out of the area.Unit Meter. ItIn case of such a movement the default distance is 200m, itThe horn beeps 20S.Siren will be sound for 20 seconds,ON" position to start the car in arm state; Siren will be sound for 20 seconds, and repeatDisarm to stop this alarmWithin 3 minutes, theIf you disarmDisarm to stop this alarm.The tracker is built in three axis acceleration sensor, the tracker can detect it in arm stateThe alarm way is same as the external shockDisarm to stop this alarm.The sensitivity of the builtin shock sensor has three different level.<http://www.mc-opony.pl/files/dyson-owners-manual-dc07.xml>

GPS Anti-theft Alarm System (GPS+GSM+SMS/GPRS)

User Manual



Thank you for purchasing the tracker. This manual shows how to operate the device smoothly and correctly. Make sure to read this manual carefully before using this product. Please note that specification and information are subject to changes without prior notice in this manual. Any change will be integrated in the latest release.

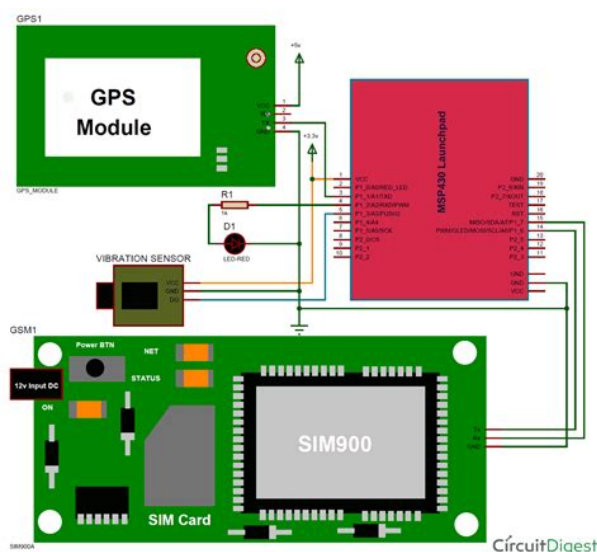
1. Accessories:

4Pin Power cable, screw, user manual. Product accessories are subject to the material object.

Second level Alarm will be triggered after detect 8 times vibration in 2 seconds, send. Third level Alarm will be triggered after detect 25 times vibration in 5 seconds, send. When the car is in the place without GSM network service, siren will be sound under SMS Mode. GPRS Mode. Set Less GPRS Traffic in GPRS Mode Sleep. Sleep. Work. Online. ACC off. No Calling. SMS and any ACC On or Calling. SMS and any ACC Off. No Calling, SMS and any SMS and any triggered alarm can awake it, ACC Off. No Calling, SMS and any triggered GPRS connect. When vehicle is not driving ACC is OFF, GSM module fall SMS command and any triggered alarm can awake it. Battery 100%. Oil 100%. GSM Signal 132. Note The higher digit it shows; the better. APN cmnet If succeed, it will reply "time OK" GPS module of the tracker device, it will reply "reset ok". Connect tracker to computer with the optional USB cable, open the memory Note Correct password is needed every time you configure the tracker. User must send SMS via cell phone to set up APN, IP and port before starting APN standards for Access Point Name and differs from country to country. For more For example Send SMS command "APN123456 CMNET". If succeeded, the tracker APN of one of china GPRS Network Operator China mobile. As for those countries Note 123456 is password for the tracker, web is the user name for GPRS login, If succeeded, tracker will reply "adminip OK". OFF, GPRS disconnect and connect again when alarm being triggered or vehicle starts Note 123456 is the password of tracker, and replace it with the new if you have changed. Users need to register an account on www.gpstrackerxy.com before use web or APP platform, Step 2 set GPRS user name and password, refer to 6.35.2. Step 3 set IP and port, please use the corresponding IP and port of the server you choose, Step 4 switch to GPRS mode, refer to 6.35.

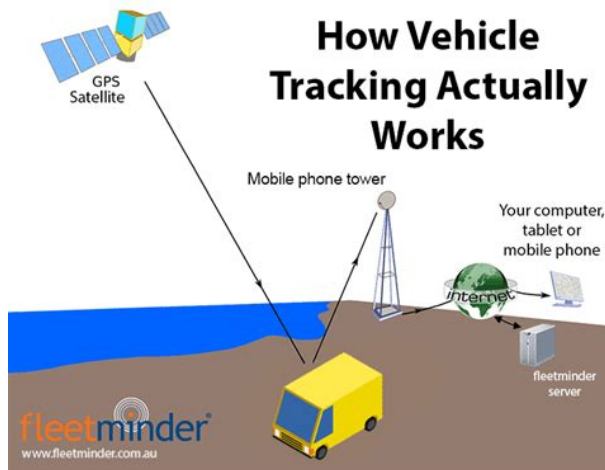
4GPRS service, Internet or not According to your phone type, download and install mobile app below the home page ID and ID, password is 8888, Please comply with the instructions to extend the unit life. Don't clean in chemicals, detergent. Otherwise, it won't work properly or destroy the product. Faults. Solution. Fail to turn it on. Please check if builtin battery is charged, and power wires. No GSM signal Please check if GPS antenna connected well, and recommend GPS. No reply to SMS Password wrong or the format is wrong. No reply to calling Please check if SIM card installed correctly. Please check if SIM card is GSM network. Don't turn on the PIN code Please check if voltage of the power is normal Operation is subject to the condition that this This equipment has been tested and found to comply with the limits for a Class B digital device, These limits are designed to

provide reasonable protection. This equipment generates, uses and can. However, there is no guarantee that. If this equipment does cause harmful. FCC Radiation Exposure Statement. This equipment complies with FCC radiation exposure limits set forth for an uncontrolled. PDF Version 1.6. Linearized No. Author Administrator. Language zhCN. Tagged PDF Yes. Creator Administrator. Document ID uuid45f4be3c92804583b3f2278a398f8523. Instance ID uuidb282268a082241ab9a06f6de281deffe. Page Count 30. We are a nonprofit group that run this service to share documents. We need your help to maintenance and improve this website. Install the USB driver. Add vehicle information and OBD terminal information. Mark sure you put the right OBD No., it's the SN number pasted on the OBD device, length is 12 digitals. Have not tried it yet. We are in pursuit of high quality, clear sound, more accurate positioning and quick charge. Features. Strong signal, reliable and stable performance. Mobile phone realtime monitoring your vehicle. GPS positioning and tracking via SMS.



<http://www.raumboerse-luzern.ch/mieten/bosch-psb-680-2re-manual>

Car Charger with USB port can power up mobile phone, MP3 player, camera, GPS navigator and other similar electronic devices. Specifications. Color black, white optional. Material plastic. Battery 3.7V 100mAh Liion Battery. Standby 12 days. Working Time 46 days. Calling Time 150180 min. Humidity Range 5%95%. Package List. Percentage off and savings amounts are based on the sellers reference price. Sellers are not required to provide a reference price, but if they do, it should be a the Manufacturers Suggested Retail Price MSRP or similar List Price of the product; or b the price at which the item has been recently offered for sale and for a reasonable period of time. We want you to be completely satisfied with your purchase on Wish. Return all products within 30 days of delivery if they are not up to your satisfaction. Please read the Privacy Policy. This site is protected by reCAPTCHA and the Google Privacy Policy and Terms of Service apply. Log In Sign Up Forgot password. Log In or Facebook Google By clicking Log In, Facebook or Google you agree to the Wish Terms of Use. It adopts the most advanced technology of GPS and LBS dual positioning. Besides, with builtin powerful magnet, it can be installed very easily and tightly on car, truck and any target with metal interface. Under GPS locating mode, the accuracy is 510 meters, under LBS locating mode, the accuracy is 1001000 meters. Realtime Tracking You will can realtime track the device on google maps via mobilephone, tablet and computer, and the minumum data upload interval is 10 seconds. History Route Playback The APP and web server can record the upload data of the device up to 6 months, you will can playback the history route at any time. Long Standby Time It has builtin 3.7V 5000mAh Liion battery, can standby up to 90 days. Powerful Magnetic It has 5pcs builtin magnets, with super strong powerful magnetic, can be very easily installed.



Waterproof The waterproof level of this device is IP65, it can resist splash water but cant be put under water. Overspeed Alarm This alarm works only under continuous positioning mode. When the unit speed is exceed the speed you presetted, it will send message "speed alarm!" to the admin number every 5 minutes. Shake Alarm After you did the shake alarm setting, please keep the tracker being stationary for 5 minutes, then this function will start working. It will send SMS "sensor alarm!" to the admin number when the unit get shocked. Geofence Set up a geofence for the tracker to restrict its movements within a district. The unit will send alarm information to APP and web server when it goes out of or get in this district. Vibration, SMS, call will can wake up the tracker. User Manual About the SIM card Please prepare a sim card, write down your SIM card number. Only the Normal GSM SIM Card works. It may needed when you want to use the application. Insert the sim card prepared into gps tracker. When you insert the SIM card to the device, Blue and yellow indicator light will flash once every 3 seconds, or you call the SIM card, it answering busy or you heard it rings and then the call fails. That's mean the device has received the GPS signal, you can go on. If at this step, the trackers's light not showing as we said or when you call the sim card with tracker, it can't connected or straight turn to voicemail, pls take out the card and plug into a phone to cancel call forwarding. Cancel pin code of the sim card. to be done with a mobile phone or the mobile service center After done that, please reinsert the sim card into the tracker, using your phone to call the trackers again. If it works, you will receive location SMS with google maps link. If it can't reply location SMS, please kindly contact us by email.

GPS Anti-theft Alarm System (GPS+GSM+SMS/GPRS)

User Manual



Thank you for purchasing the tracker. This manual shows how to operate the device smoothly and correctly. Make sure to read this manual carefully before using this product. Please note that specification and information are subject to changes without prior notice in this manual. Any change will be integrated in the latest release.

1. Accessories:

4Pin Power cable, screw, user manual, Product accessories are subject to the material object.

About this function After parking the car for 5 minutes, if you restart the car, the shock sensor alarm will feel the vibration, then it will send a SMS alarm to the admin number. But if the car is rolling on the road, the device will always detect vibrations and no alarm will be generated. Set the power saving mode 1. Sleep by time mode setting Command sleep123456 time The SMS command and phone call can wake up the tracker. After waking up, the tracker only works for 5 minutes and it will return to standby mode, the GPS is off, the GSM operates in low consumption mode. 2. Sleep by shock mode setting Command sleep123456 shock The Vibration, SMS command and phone call can wake up the tracker. After waking up, the tracker only works for 5 minutes and it will return to standby mode, the GPS is off, the GSM operates in low consumption mode. The default password is 123456 2. If you have several trackers, you can contact us to request for creating an account to manage there trackers. And then, you can log in the application by username and password. After logging in the application, If there is TKSXXX not enabled showed at the top of the main page, you just need to set APN. 3. If you have problems in using the application, please contact us for assistance. Tracking by Web Log in the webiste www.mytkstar.net as the same way as logging in to the app. You can get the tracking information via this Website. The default password is 123456, and it can be changed via this website. After you done that, pls restart the tracker by take out sim card reinsert it. Eg For TMobile SIM card in Germany, the APN information is APN name internet.telekom APN user name tmobile APN password tm The SMS commands are gprs123456 apn123456 internet.telekom apnuser123456 tmobile Apnpasswd123456 tm Our Service Please contact us by email or whatsapp if there is any problem. We will reply you as soon as possible in 24 hours. Please each customer should be noted and correct the wrong created accounts.

For single vehicle client only. No need create account. Once a device is added, it can login with either Asset Name Normally Car Plate No. or Device IMEI Normally device ID. In below picture, Asset Name and Device ID act as IMEI login ID. Search POSGPS at Google Play. Below is the APP Icon. Full Global Coverage. 4G LTE RealTime Tracking for Vehicle, Asset, Fleet, Elderly and more. Subscription is required. Please try again. Please try again. Please feel free to contact us if you need any help, you will get a satisfactory solution within 24 hours. Page 1 of 1 Start over Page 1 of 1 In order to navigate out of this carousel please use your heading shortcut key to navigate to the next or previous heading. Full Global Coverage. 4G LTE RealTime Tracking for Vehicle, Asset, Fleet, Elderly

and more. Subscription is required. Register a free business account Please try your search again later. For Vehicles, Car, Kids. Magnetic Hidden small Portable Tracking Device. Child, elderly, Dog pet drone motorcycle bike auto Full Global Coverage. 4G LTE RealTime Tracking for Vehicle, Asset, Fleet, Elderly and more. Subscription is required. It works with the 2G network from TMobile and SpeedTalk in the US and almost all telecom operators in South America. Refer to the user manual for installation and testing. Please feel free to contact us for help if any question, you will get an effective solution within 24 hours. You will receive alarm messages by SMS and APP if any abnormal conditions. GeoFence Alarm Set a geofence for the tracker to limit its movement within this area, and you will receive alarm messages when the device leaves the zone. Speeding Alarm When your vehicle is out of the set speed, the tracker will send you an Overspeed alarm message to remind you to drive safely. 90 Days Driving Trajectories Viewing This Function can help you find back stolen or robbed vehicles. To calculate the overall star rating and percentage breakdown by star, we don't use a simple average.

<http://www.naturapreserved.com/wp-content/plugins/formcraft/file-upload/server/content/files/16272d863e876e---bridgeport-cnc-manual.pdf>

Instead, our system considers things like how recent a review is and if the reviewer bought the item on Amazon. It also analyzes reviews to verify trustworthiness. Please try again later. It calls me and texts me when the motor detects movement, the ignition is turned on, or the bike moves out of my preset zone. All this is selectable anywhere anytime with your cellphone. I got through the install so easy. Really worth the money. I would recommend to anyone or buy again. Indicator light Status Green Light Solid GSM Cell Signal Connected Green Light Flash Searching for GSM Cell Signal Blue Light Solid GPS Signal Connected. Blue Light Flash Searching for GPS Signal. Red Light Solid Power Ok Wasn't looking for that type of tracker Yet location on the app and the pc are in the Atlantic Ocean. When The 2 Gps devices are in Florida. I try to send message to the co no luck. How to Operate it The default user password is 111111. If the user password is changed, user should send the SMS command with the new user password instead of 111111. It is the default setting. 111111SPD to check the setting of overspeed alert. SMS command 111111LNGX it is used to define the SMS content in different languages. The tracker will only accept commands with the correct password. To set the parameter, please. Alarm Types Vibration Alarm In arming status, if the car is vibrated, it will send out alarm SMS. Power Failure Alarm In arming status, if the battery is cut off, it will send out alarm SMS. Installation PIN No. Blue For optional use. Otherwise, fix the GSM antenna or GPS antenna at other places until the signals are OK. Pictures are for indication and illustration purposes only. Pictures are for indication and illustration purposes only. When the SIM card is ready you will hear a click. Or else please insert again and then replace the silicon seal. Note Please use GSM network SIM card; Power off before installing or removing the SIM card.

cg.algeria-dubai.com/userfiles/files/comdial-manual-7260.pdf

The SIM card used should be enabled for GPRS. The SIM card used should be enabled for called ID. If there is a power on password, or pin, please cancel it; Ensure the SIM card can send and receive SMS. Please refer installation to an auto electrical contractor. NOTE Covertly installation is suggested. During installation, please make sure the receiving side face is up, with no metal object above the device to interfere with GPS reception. The following places are suggested for installation In this case, please change the installation place. Please choose 24V relay if it is 24V car battery. Please use the power line which The red line is the positive. The black line is the negative. The negative should earth alone or link iron during installing. Do not connect it to other ground wire. Please make sure to connect the ACC line. The tracker will decide whether to enter ignition detection according to ACC status. If do not connect to ACC line, the device will enter ignition detection status. If the vehicle vibrates when moving, it will activate the vibration alarm. If there is no need for the theftproof function, connect the ACC line to the positive in parallel and keep high

level. There is a reply SMS after sending the command. If set successfully, there is a "ok" reply SMS; or else please set again. The device will reply the corresponding information after sending the SMS command. Any phone numbers can send SMS command to the device as default. Command format Device will be connected to other platform. Command format SMS command to the device to delete the number. Only SOS phone number can send this command successfully to set the center number. The command is If the vehicle battery is still not on ACC is in low level after 3 minutes, the device will start vibration alarm. Once received "OK", it succeeds. Once GPS LED keeps solid light, it means the device has been located and it starts to work. Power off Just turn off the power switch.

During the working time, it can upload data to server every 10 seconds. Check location If the device succeed to get the address, it will reply a location Google Map link. You can get the address. If the device does not search any information of location, it will send "No data" to the cell phone. Example LatN22.571285,LonE113.877115,Course42.20,Speed0.0740,DateTime10 1123 222851 If the device does not search any information of location, it will send "No data" to the cell phone. Then the device will send SOS SMS to preset specific numbers and then dial the numbers in circles until the call is through. At the meantime, the device will upload SOS alarm data to the server. In this case, the device will send related SMS to the specific numbers and dial the numbers in circles. If nobody answers, the call just keeps 3 loops at most. At the meantime, the device will upload SOS alarm data to the server. Low battery alarm sms content example "Attention!!!battery too low, please charge." Which means the battery is to low, to inform user charging it in time. Note SMS and call alarm function need setting specific numbers before hand. When the security alarm is on, once the vehicle vibrates for several times, the alarm will be activated, in the later 3 minutes, vehicle power is still offACC status is low, device will start alarm. If nobody answers, the call just keeps 3 loops at most. Incoming call from non special number will not activate voice monitoring function. Note To realize this function, please set special numbers before hand. The SIM card put into the device should be equipped with caller identification. It needs password and platform account password is needed when sending oil cut off command. Only center number can send the command to the device to cut off and restore oil. Device will restore oil supplying, and vehicle will work normally again. Platform account password is needed when sending oil cut off command.

There is also a playback feature that allows you to view where the vehicle has been for up to 30 days in the past making it ideal for fleet management. Please check the installation of device In normal working status, the red LED is in solid bright or flashing; green LED and blue LED are both in solid bright. If it is not convenient to check that, please check the SIM card status Generally, it needs 12 minutes to receive the first coordinates. If the FUSE in it is blown, please contact your distributor to exchange with the same model FUSE, after the internal trouble is shoot, it can be power on to work again. Builtin motion sensor for power saving 2 Command W,000 Note The default password is the following the same 5 And if X is less than or equal to 5 seconds, then the function will be disabled. Tracker ID must be less than 14 digitals Example SMS send W000000,010, Meaning this tracker s ID is Set APN by SMS Description W,011, APN name, APN username, APN password if no username and password required, just put in APN name only. POWER Red DC In power source. GND Black Ground. The GSM antenna is nondirectional, so you can hide it in any place of vehicle. Connect the GPS antenna to the GPS connector which is GPS labeled. The optimum location for the GPS antenna is on the roof of the vehicle. The covert and GPS antenna are directional, make sure they are facing up and lying as flat as possible. Secure them in place with glue or zip ties. Note Do not shield or cover the GPS antenna with any objects containing metal. 8.3 Install Camera optional More specific details refer to Appendix 4 Wait for SMS. Some GSM networks slow down during peak times or when they have equipment problems. Insert the correct password Replace or top up the SIM card Insert working SIM card. Check in phone that the SIM can send SMS messages. Replace SIM card if needed. Remove PIN code by inserting SIM in you phone and deleting the code Inspect SIM, clean the contacts.

If reinserting does not help try another to see if it will work. If you are in a different country your SIM account must have roaming enabled Recharge the unit and the GSM will start working. Problem SMS from VT1000 states last. Possible Cause Unit does not have clear view of the sky VT1000 is in an inner place Resolution Move the antenna of the unit to a location where the sky is visible. Wait for the target to come out Note Don't connect VT1000 to external battery when configuring. Connect the USB Data Cable between VT1000 and PC. 2. Connect the configuration cable with PC, open device management of your computer, you can find Prolific USBtoSerial Comm. Port, as following picture shows. The USB port is virtual comm. Port com3 in this example, Extend Settings Set Geofence alarm 017 command is for alarm when tracker moves out the preset scope; 117 command is for alarm when tracker moves in. When the tracker moves in or out, it will send an SMS alarm to the authorized phone number for SOS. It is in stops working. GSM enters unit of minute. Password Initialization W888888,999,666 This command will reset the current password to factory default password 24 Appendix 3 RFID Car Alarm Functions and How to use RFID Reader RFID Tag 1. Install RFID as following When tracker normal work and installed RFID reader later. 2. SMS Commands 2.1 To configure authorized RFID tag by SMS commands W,060,num1 W,160,num2 W,260,num3 W,360,num4 W,460,num5 Note The default password is Num1, num2, num3, num4, num5 means 5 digital FRID number. For example if configure NO as the authorized RFID tag, then send SMS W000000,060,00412 Tracker will reply SMS STUDY ID OK 100412; 200000; 300000; 400000; 500000, means the 1 st RFID tag number is 00412, the 2 nd, 3 rd, 4 th, 5 th RFID tag not set.

If the RFID tag is detected at this time, tracker will send SMS NOW ID 00412, if tracker will not send SMS NOW ID00412, send Enable The RFID Function W000000,062,1 and then, Mobile phone will receive an SMS NOW ID00412, means RFID tag is detected. Note RFID reader detecting test RFID tag distance is within 5 meters. Another way to configure authorized RFID tag by Parameter. Step 1 Open GPS Tracker Editor 2010 V2.65 following picture Following Appendix 1 to configure the tracker 25 Turn on MT100 and it will connect with the Editor automatic, As soon as they connect successful, all the buttons are availability and the status bar will clue on Tracker Connect!, then you can Read or Write the MT100 s Parameters Step 2 Finding RFID Settings as following picture. Following the digital sort to do 1. write the RFID tag s number, example 00412 2. click Apply, then display com operate success, click the OK; 3. Click the Read. 4. Then it will display 412 it prove already configure authorized RFID tag succeed. Enable function of cutting off oilway when illegally ignite under ARM status SMS command W,061,1 Disable function of cutting off oilway when illegally ignite under ARM status SMS command W,061,0 The system default setting is disable function of cutting off oilway when illegally ignite under ARM status. 2.3 Enable RFID Detection W000000,062,1 Disable RFID Detection W000000,062,0 The system s default setting is disable RFID detection function. The arming SMS command arm The disarming SMS command dsm, When send the disarming SMS command DSM, it will automatic disable the RFID function, and if send the enable SMS command the RFID function will be restored. 3. Command List Description Command Reply SMS Configure authorized RFID tag W,060,num1 W,160,num2 W,260,num3 W,360,num4 W,460,num5 STUDY ID OK 1num1; 2num2; 3num3; 4num4; 5num5 Enable the RFID detection W,062,1 ENABLE OK. Disable the RFID detection W,062,0 DISABLE OK. Arm arm Vehicle is armed.

Disarm dsm Enable function of cutting off W,061,1 System default setting is oilway when illegally ignite under ARM status Disable function of cutting off oilway when illegally ignite under ARM status W,061,0 disable function of cutting off oilway when illegally ignite under ARM status 27 4. Functions 4.1 To ignite in Armed status, it will check the RFID tag. If an authorized tag can be detected, it will not alert. If an authorized tag can not be detected, it will send alert SMS Engine Is On. If an authorized tag can be detected, it will not alert; if an authorized tag can not be detected, it will send alert SMS Door Is Open. Put the mouse on the logo, It will automatically pop up frame instructed 3, you can click the Take Photo in the options instructed 3, then it will taking photo down following picture P3 If you want to see photos record, please click Report Centre instructed 4, then

The Report interface will pop up; following picture P4 P333 34 P4 In Reports options, there is a Picture Report, click it instructed⁵, then it will display Picture Report interface. Choose you want to choose the vehicle instructed⁶, wait for few seconds, it will display the Picture Report, click view, Will see you want to see pictures instructed⁷ Appendix 5 Fuel Sensor Installation and function 1. Installation instruction 1.1 Installation flow chart 35 floater 1.2 Operation procedures Find the position Generally installed in the middle of the fuel tank, to avoid the original fuel Clean the oil stain on the installation position Clean the oil stain on the installation position Holing Use handdrill with a 42mm metal drill bit, connect the power supply and drill in the position Note please do not drill too fast, stop when it is about to drop, then use the screwdriver and sharpnose plier to remove the attached metal scraps to prevent them dropping into the tank .

<https://www.thebiketube.com/acros-bosch-psb-600-re-manual>