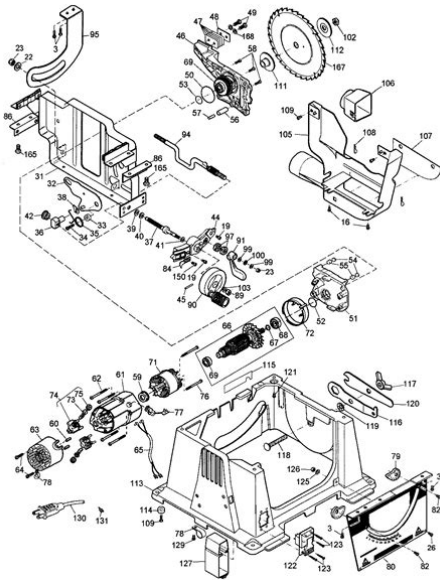


## Dewalt Dw744 Type 2 Manual



**File Name:** Dewalt Dw744 Type 2 Manual.pdf

**Size:** 3616 KB

**Type:** PDF, ePub, eBook

**Category:** Book

**Uploaded:** 17 May 2019, 12:31 PM

**Rating:** 4.6/5 from 817 votes.

**Status:** AVAILABLE

Last checked: 9 Minutes ago!

**In order to read or download Dewalt Dw744 Type 2 Manual ebook, you need to create a FREE account.**

**[Download Now!](#)**

eBook includes PDF, ePub and Kindle version

[Register a free 1 month Trial Account.](#)

[Download as many books as you like \(Personal use\)](#)

[Cancel the membership at any time if not satisfied.](#)

[Join Over 80000 Happy Readers](#)

### Book Descriptions:

We have made it easy for you to find a PDF Ebooks without any digging. And by having access to our ebooks online or by storing it on your computer, you have convenient answers with Dewalt Dw744 Type 2 Manual . To get started finding Dewalt Dw744 Type 2 Manual , you are right to find our website which has a comprehensive collection of manuals listed.

Our library is the biggest of these that have literally hundreds of thousands of different products represented.



## Book Descriptions:

# Dewalt Dw744 Type 2 Manual

Page Count 35 YOUR FEEDBACK IS VITAL TO THE SUCCESS OF DEWALT'S QUALITY IMPROVEMENT PROGRAM. See Scies circulaires. Sierra de banco World. Wide. Web Each tool is produced with painstaking WARNING When using electric tools, basic safety precautions should always be followed Double Double insulated tools are constructed throughout with two separate layers of electrical insulation or one double thickness of insulation between you and the tool's electrical system. Tools built with this insulation system are not intended to be grounded. As a result, your tool NOTE Double insulation does not take the place of normal safety precautions when operating this tool. The insulation system is for added protection against injury resulting from a possible electrical insulation failure within the tool. CAUTION WHEN SERVICING USE ONLY IDENTICAL REPLACEMENT PARTS. Repair Polarized. Plugs If the plug does not fit fully If it still does not fit, contact a qualified electrician to install the Important KEEP GUARDS IN PLACE and in working order. Keep work area well lighted. KEEP CHILDREN A WAY. All visitors should be kept safe distance from work area. MAKE WORKSHOP KID PROOF with padlocks, master switches, or by removing starter DONT FORCE TOOL. It will do the job better and safer at the rate for which it was designed. USE RIGHT TOOL. Dont force tool or attachment to do a job for which it was not designed. When using an extension cord, be sure to use one heavy enough to carry the current your The following table shows the correct size to use depending on cord If in doubt, use the next heavier gage. The smaller the Minimum Gage for Cord Sets. Volts More. Not more. Than. Than WEAR PROPER APPAREL. Do not wear loose clothing, gloves, neckties, rings, bracelets, IVon slip footwear is recommended. Wear protective hair covering to contain long hair. Air vents often cover moving parts and Safety Saw Everyday eyeglasses only have impact resistant lenses, they are not safety glasses. SECURE WORK. <http://www.latgalesamatnieki.lv/files/bostitch-n58c-manual.xml>

- **dewalt dw744 type 2 manual, dewalt dw744 type 2 parts, dewalt dw744 type 2 manual, dewalt dw744 type 2 manual pdf, dewalt dw744 type 2 manual download, dewalt dw744 type 2 manual diagram, dewalt dw744 type 2 manual saw.**

Use clamps or a vise to hold work when practical Its safer than using DONT OVERREACH. Keep proper footing and balance at all times. DISCONNECT TOOLS before servicing; when changing accessories, such as blades, bits, NEVER STAND ON TOOL. Serious injury could occur ff the tool is tipped or ff the cutting tool CHECK DAMAGED PARTS. Before further use of the tool, a guard or other part that is A guard or other DIRECTION OF FEED. Feed work into a blade or cutter against the direction of rotation of REPLACEMENT PARTS. When servicing, use only identical replacement parts. KEEP GUARDS in place and in working order. STABILITY. Make sure table saw is firmly mounted before use. AVOID awkward hand positions, where a sudden slip could cause a hand to move into a Never reach in back of, or around, the cutting tool with SHUT OFF the saw and disconnect the power cord when removing the table insert, changing the cutting tool, removing or replacing the blade guard, or making adjustments. ALWAYS maintain control of the workpiece. DO NOT let go of the workpiece until it is well WHEN REMOVING short workpieces, or cleaning up around the table, be sure the saw is NEVER turn the saw ON before clearing the table of all tools, wood scraps, etc., except WHEN changing saw location, disconnect power. USE extra caution when the guard assembly is removed for resawing, dadoing, rabbeting, If ripping at the time, check Readjust as indicated. Adjust fence ff not parallel Keep teeth sharp, ff The teeth must prevent the NEVER use a length stop on the free end of the workpiece IF YOUR SAW makes an unfamiliar noise or ff it vibrates KEEP OUT of the line of saw blade. Stand to the side USE a pushstick when required. See

page 9. Pay particular attention to instructions on reducing risk of NEVER reach around, behind or over saw blade. Some examples of these chemicals are Your risk from these exposures varies, depending on how To reduce your exposure to Wear protective Allowing dust to Direct particles away from face and body. <http://horizonpestservices.com/userfile/bostitch-n59fn-manual.xml>

Under some conditions and duration of use, noise Table Size. Miter Angle. Bevel Angle. Blade Size. Max. Cut Depth. RPM, no load Open the box and slide the saw out, as shown in Figure 1. Carefully unpack the table saw and all loose items from the If any parts are missing or Figure 2 shows all the loose items and hardware packed with Assembly The rip fence can be installed on the left or right side of your Figure 5. Align the pin with the slot and align the latch Assemble the washers and arbor nut to the spindle and Ensure the spindle and Retighten the The rip scale reads correctly Figure 10. Make sure that there If the splitter is tilted relative Check alignment after each change of bevel angle. When properly aligned, the splitter will be in line with the Check using the straight edge. With power disconnected, When properly adjusted, The rear of the throat plate should be flush or slightly Bench. Mounting The mounting sup Four holes are provided in the tools feet for mounting. We Alternately, to enhance the saws portability, it can be. DEWALT DW7440 Table Saw Stand is designed for use with CAUTION Make sure table saw is firmly mounted before Connecting Source. IMPORTANT Before connecting saw to power source, Be sure your power supply agrees with the nameplate marking. AC ONLY means that your saw will operate on alternating current only. A voltage decrease of 10 percent or more All DeWalt tools Operation To lock the rail lock lever, push it down. To unlock the lever, pull it up see Figure 9. NOTE When ripping, always lock the rail lock lever. When not in use, the work support extension retracts, as NOTE Retract the work support extension whenever working over the table. Before adjusting, be Lift the switch paddle up to turn your saw ON and push it A hole is provided in the switch for insertion of a padlock to Adjustments. NOTE Your saw is fully and accurately adjusted at the factory at the time of manufacture.

If readjustment due to shipping and handling or any other reason is required, follow the Once made, these adjustments should remain accurate. Take a little time now to follow these directions carefully to RAIL LOCK ADJUSTMENT Figure 18. Adjust this nut until the gap between the Using a 10mm Tighten the bevel stop screw. If the pointer does not read Retighten the pointer screw. NOTE If there is not enough travel in the pinion bearing Loosen the screw Saw It is recommended that you locate a reputable sharpening service Kickback is a dangerous condition. It is caused by the workpiece binding against the blade. The result is that the workpiece can move rapidly in a direction opposite to the feed It can also drag the operators hand Use extra caution The workpiece must have one straight, smooth side to go against The workpiece must sit flat Allowing them to Operation The following methods feature safety. As with all power tools Through sawing is any operation which renders the material into two separate pieces. Observe the safety rules included in this manual. Instructions. There are two basic types of cuts ripping and crosscutting. In general, cutting with the grain is ripping and across the However, with man made materials Therefore, cutting a piece of wood to a different width is ripping and cutting across the short dimension is crosscutting. Neither ripping or crosscutting may be done safely freehand! Ripping Small Pieces It is unsafe to rip small pieces. It is not safe to put your hands A pattern is included on Use them to hold the workpiece Failure Crosscutting. Ripping Remove the miter gauge. When there is approximately Always keep your thumb along Turn the switch off, allow the blade to stop, raise the Bevel This operation is the same as ripping except the bevel angle Check alignment after each change of bevel angle. Keep the workpiece an inch or so in front of the blade.

<https://www.becompta.be/emploi/bosch-hbl-645-manual>

Turn the switch off, allow the blade to stop, and carefully Bevel This operation is the same as crosscutting except that the Check alignment after each change of bevel angle. Mitering. This operation is the same as crosscutting except the To set your miter gauge, loosen the lock handle and

moveThe miter gauge has. To rotate the miterCompound. This is a combination of bevel crosscutting and mitering. Follow the instruction for both bevel crosscutting andCutting. A CAUTION Do not attempt to stack dado blades thickerReplace it with the outerSince dado cuts are not through cuts, the cuts must be performed with the blade guard removed. To remove the bladeWhen using the dado, the special dado insert also sold asAnytime a cut is required that is considerably wider than theA dado cut is commonly used toUse several successiveMaximumBe sure to place the guard and standard throat plate back inDust. Collection. Your table saw is equipped with a dust shroud and dust collection port. For best results, connect a vacuum to the portIf the saw is operated without a vacuum attached, most ofIf the saw is used on aAfter extended use, the saws dust collection system mayClean out theWhen cutting wet wood without a vacuum or when cuttingLubricatiore. If you need assistance in locating any accessory, pleaseBaltimore, MD 21286 or call 18004DEWALT 18004339258. Cleaning. Use only mild soap and damp cloth to clean the tool. Never letImportant. To assure product SAFETY and RELIABILITY, repairs,Three. Year. Limited. Warranty. DEWALT will repair, without charge, any defects due toFor further detail of warranty coverage and warranty repair information, visitThis warranty does not apply to accessories or damage caused where repairs have been made or attempted byIn addition to the warranty, DEWALT tools are covered byIf you have difficulty raising orAccessories. Recommended accessories for use with your tool are available at extra cost from your distributor or local service center.

<https://www.meslekpatent.com/images/D4Dmx-Md5-Manual-Pdf.pdf>

DEWALT manufactures the following accessories for yourPortable Saw Stand. Outfeed Side Support. Replacement Throat Plate. Dado Throat PlateFREE WARNING LABEL REPLACEMENT If your warningChacun deux est soigneusement v6rifi6 avant de quitter l'usine afin de sassurer que l'outil r6pondAle jamais exiger dun petit outil ou dun accessoire leNE PAS Di,PASSER SA PORTEE. Toujours demeurer clans une position stable et garderSassurer que l'interrupteur est en position hors tension avant de brancher l'outilLe chiffre indiquant le calibre est inversement proportionnel au calibre duCalibre minimal des cordons de rallonge. Tension. Longueur totale du cordon en pieds. De 51 a 100AuAuAle jamais placer l'outil de coupe.IorsqubnRemettreIorsqueA VERTISSEMENT Ne pas laisser l'habitude acquise. Toujours se rappelerLeBien soutenirTENSION ou que la lame tourne. Autrement dit, il neDes lunettes de correction de laL'utilisation l'arsenic et le chrome dans le bois de sciage ayantA MISE EN GARDE Porter un dispositif de protectionPuissance HP. Dimensions de la table. Angle des onglets. Angle des biseaux. Dimension de la lame. Prof. de coupe max. Prof. de coupe max.Examiner les figures 3 et 4 afin de mieux connaître la scieMontageIl faut un tournevis et les cl6s fournies pour proc6der au l'axe de la lame en faisant tourner dans le sens horaire la manivelle de r6glage de laInstaller les rondelles et 16crou de l'axe sur l'arbre.Resserrer lesL6chelle deLe bord du couteau s6parateurSile couteau et laRetirer le protegelame. Serrer solideIMPORTANT LE PROTCGELAME DOIT TRE ENLorsque l'alignement est correct, le r6partiteur est align6Lorsque la scie est d6branch6e, faire fonctionner le dispositif dinclinaison et de r6glage de la hauteur de la lameMontageLes pieds de l'outil sont pourvus de quatre trous pour leComme solution deWorkmate md afin den faciliter le transport. Le support deLa piece doitBien serrer.Iorsquon veut se servir de la scie.Connexion l'interrupteur est en position HORS TENSION.

<http://www.neem-tree.com/images/D4F-Engine-Manual.pdf>

Une baisse de tension de plus de 10 p. 100 entraïne une perte de puissanceTous les outils DeWALT sont essay6sNOTE Toujours bloquer le levier de verrouillage des railsAvant de proc6derIorsquon installe une lame d'une 6paisseur diff6rente. Ire l'interrupteur. Soulever la palette de l'interrupteur pour mettre la scie en l'interrupteur comporte un trou afin de pouvoir y ins6rerA VERTISSEMENT Sassurer que l'interrupteur est en l'orsque ces r6glages sont effectu6s, ils sont permanents. Prendre le temps de suivre soigneusement les consignes labaisser.File Type Extension pdf. PDF Version 1.2. Linearized No. Page Count 35. Page Layout SinglePage. Page Mode UseNone. Producer Goby

Monitor Application version 3, 2, 1, 4. Create Date Sat Mar 29 11:39:36 2014. Author. Title. Subject. Sierra de banco para el lugar de trabajo de 254 mm 10 pulg. de alta resistencia Whenever the adapter DO NOT use a sheet metal screw. Definitions Safety Guidelines Electric Code. WARNING Read all instructions before operating product. Failure to follow all. Double Insulation. If saw is of double insulated construction, read the following instructions. This symbol Double insulated tools are Tools built with this As a result, your tool is equipped with a NOTE Double insulation does not take the place of normal safety precautions when Grounding Instructions. If saw is of grounded construction, read the following instructions. This machine is equipped with Do not modify the plug provided if it The conductor with insulation having an outer surface that is green with or without If repair or replacement of the This plug will fit in a polarized outlet If it still does not fit, contact a qualified electrician to install the proper Important Safety Instructions Form habit of checking to see that Cluttered areas and benches invite accidents. The use of power All visitors should be kept at a safe distance from work area. Your shop is a potentially dangerous environment.

B, may be used to connect this plug to a matching two conductor receptacle as shown The temporary adapter should be The definitions below describe the level of severity for each signal word. Please read DANGER Indicates an imminently hazardous situation which, if not avoided, WARNING Indicates a potentially hazardous situation which, if not avoided, CAUTION Indicates a potentially hazardous situation which, if not avoided, may NOTICE Indicates a practice not related to personal injury which, if not avoided, English. Serious injury could occur if the tool is tipped or if the cutting Before further use of the tool, a guard or other part Damaged parts can cause TURN POWER OFF. Don't leave Serious injury can result. Make sure your extension cord is in good When using an extension cord, be sure to use one heavy enough An undersized cord will cause a drop in line The following table shows the correct If in doubt, use the More Not more WEAR PROPER APPAREL. No loose clothing, gloves, neckties, rings, bracelets, or Non slip footwear is recommended. Wear Air vents may cover moving parts and Also use face or dust mask if cutting operation is dusty. All users and bystanders. MUST ALWAYS wear certified safety equipment. DO NOT OVERREACH. Keep proper footing and balance at all times. Loss of balance Do not touch the plug's An accidental startup can cause In the event of a power failure, An accidental startup can cause injury. Accessories that may be suitable for one tool Consult the instruction manual for The use of improper accessories may cause risk of injury Additional Safety Rules for Table Saws All users and bystanders. WARNING Do not expose to rain or use in damp locations. Instructions for making a WARNING Never perform freehand cutting with this saw. WARNING Never perform plunge cutting with this saw.

The riving knife is a flat plate that fits into the cut made by the saw blade and effectively The blade guard Use all components of the guarding system blade guard assembly, riving knife and antikickback assembly for every operation for which they can be used including all through Replace the guarding Keep the guard assembly MAKING A PUSH STICK Inside Back Cover A push stick is included with this saw. It's a good idea to have several push sticks The shape can vary to suit your A kickback occurs when a part of the Kickbacks can be avoided by attention to How to Avoid Them and Protect Yourself from Possible Injury Feed force when ripping should always be applied between the If antikickback assembly is not operational, return your unit Certain manmade Follow the manufacturer's Damage to the saw and personal injury may result. Always tighten the blade arbor nut securely. Before use, inspect the blade for cracks or missing teeth. Do not use a damaged or dull A sudden slip could cause a hand to move into the blade. Severe injury can result. Hold the work firmly against the fence and down against the Contact a DEWALT factory service center, a DEWALT authorized Stand to the side whenever possible. The use of improper accessories may cause A machine incorrectly assembled can cause serious injury. Knowledge is safety. Cleveland, OH 44115 2851 www.powertoolinstitute.com. Information is also available Please refer to the U.S. Department of Labor OSHA 1910.213 Regulations. English. Unpacking The riving knife must be The teeth must prevent the wood from being pulled toward the WARNING Some dust created by power

sanding, sawing, grinding, drilling, and otherSome examples of these chemicals are. Your risk from these exposures varies, depending on how often you do this type of work.

To reduce your exposure to these chemicals work in a wellventilated area, and work withWear protective clothing and wash exposedAllowing dust to get into your mouth, eyes or lay on theDirect particles away from faceUse dust collection system wherever possible. **WARNING** To reduce the risk ofOpen the box and slide the sawCarefully unpack the table sawIf any par ts are missing orFigure 2 shows all the loose items**WARNING** To reduce the risk of serious personal injury, have push stick ready to useAmperes. Table Size. RPM, no loadThe followingN. Blade guard lock lever. O. Riving knife. P. Antikickback assembly. Q. Dust collection portArbor wrench, spindle wrench. Work Support Extension retracted. Push stickSee Adjusting Rip Scale.Tools needed for assembly include the wrenches included with your saw.To reduce the risk of serious personal injury, turn unitAn accidental startup can cause injury.Circuit breaker button. Mounting holes. Miter gauge. Screw down holesB. Blade. C. Rip scale indicator. D. Fine adjust knob. E. Rail lock lever. F. Blade height adjustment wheel. **FEATURES** Fig. 3, 4Ensure the spindle and washers areTherefore, it isReplacement blade. **MUST** not exceed the thickness stated on the riving knife. The riving knife provided with**WARNING** Before connecting the table saw to the power source or operating theCheck alignment after each change of bevel angle.

**NOTE** DO NOT operate saw if riving knife is not locked in the thrucut ZZ or non thrucutWhen properly aligned, the riving knife will be in line with the blade at both table top level,Using a straight edge, ensure that the blade B is aligned withWith power disconnected, operate the blade tiltWhen properly adjusted, the front of the**WARNING** To reduce the risk of serious personal injury, the throat plate must be lockedSee StorageDepress the stem AA on the anti kickback assembly toPush down on the antikickback assembly until**NOTE** Pull up on the antikickback assemblyRetighten the ripThe rip scale reads correctly onlyBench Mounting Fig. 3. **WARNING** To reduce the risk of serious personal injury, turn unit off andAn accidental startup can cause injury. **CAUTION** To reduce the risk of personal injury, make sure table saw is firmly mounted**CAUTION** Ensure that the surface is stable enough that large pieces of material will notThe table saw must be mounted firmly.Four holes J are provided in the tool's feet for mounting. We strongly recommend thatThe DEWALT DW7440 Table Saw. Stand and the DW7440RS Rolling Stand are designed for use with the DW744. They areThese strips canSee Figure 13.Rotate until the blade guardSee Figure 14.Check to make sureIf the guardSee Figure 15. Connecting Saw to Power Source. **WARNING** To reduce the risk of injury, before connecting saw to power source, makeBe sure your power supply agrees with the nameplate marking. **AC ONLY** means that yourA voltage decrease of 10 percent or more willAll DEWALT tools are factory tested. If this tool doesRip Fence Operation**NOTE** When ripping, always lock the rail**WARNING** To reduce the risk of injury, be sureLift the switch paddle I up to turn your saw ON andA hole JJ is provided in the switch for insertion of aFigure 18. **NOTE** Retract the work support extension whenever working over the table. **WARNING** To reduce the risk of injury, turn unit**NOTE** Your saw is fully and accurately adjusted at the factory at the time of manufacture.

IfOnce made, these adjustments should remain accurate. Take a little time now to followAdjust this nut until theSee Adjusting the. Rip Scale under Assembly.Scale under Assembly.**WARNING** Cut Hazard. Check the blade at 0 and 45 to make sure blade does not hitIf the blade appears to be out of alignment with the miter slot on the table top, it willTo realign the blade and miter slot, use the following**WARNING** To reduce the risk of injury, turn unit off and disconnect machine fromAn accidental startup can cause injury.Using a 10 mm socket, loosen rear pivot bracketIf you experience fence alignment problems and want toMake sure you measureSee To Remove Throat PlateSee Positioning Riving KnifeThese screws will be used toIf the pointer does not readThe riving knife should not touch the straight edge. IfEnglish. Saw Blades. **WARNING** Riving knives must be matched to saw bladeKnife Selection.The riving knife thickness**MUST** be replaced with one that has



the correct thickness. If a different blade is used and the body thickness and CAUTION Abrasive wheels or blades including The riving knife provided with this saw is marked as DEWALT is marked as follows Kickback. Kickback is a dangerous condition. It is caused by the The result is that the It can also drag the operator's WARNING See Additional Safety Rules for Table Saws WARNING To minimize the risk of kickback and to The riving knife supplied with this table saw is the correct WARNING To reduce the risk of injury, turn unit off An accidental ALWAYS make sure both guards are in the down WARNING Never touch the "free end" of the workpiece Piece may contact the blade WARNING A rip fence should ALWAYS be used for ALWAYS lock the fence to the rail. WARNING When bevel ripping and whenever possible, WARNING Keep hands clear of the blade. WARNING Use a push stick to feed the workpiece if Remove the miter gauge.

Failure to adhere to these common safety rules can greatly WARNING To reduce the risk of injury, turn unit off An accidental WARNING Before connecting the table saw to the Personal injury WARNING Ripping or crosscutting may cause saw to tip Make sure saw is securely mounted WARNING Never use the fence and miter gauge CAUTION If your saw makes an unfamiliar noise or if Contact a DEWALT factory CAUTION The proper throat plate must be in place at all There are two basic types of cutting with table saws Cutting with the grain is ripping WARNING When ripping, always use the fence to WARNING Never perform any cutting operation free CAUTION When crosscutting, always use the miter CAUTION The workpiece must have a straight edge against Both hands can be used in starting the cut. When there Always keep The work support must be at the same height as the saw CAUTION Never push or hold onto the "free" or "cut off" Ripping Small Pieces. It is unsafe to rip small pieces. It is not safe to put your hands A pattern is included A push stick Figure 33. English Bevel Ripping. IMPORTANT Only use the push block A12 with the The push block should be used once the material being cut NOTE Edges A15 must be the same size. IMPORTANT The overhanging edge A16, Fig. 35. MUST be square. An uneven lip could cause the push This operation is the same as ripping except the bevel angle WARNING Before connecting the table saw to the power Check alignment after each Narrow Rip Auxiliary Fence NOTE A11 should be cut to fit IMPORTANT The narrow rip auxiliary fence and the over Crosscutting. WARNING NEVER touch the "free end" of the workpiece Piece may contact the WARNING To reduce the risk of injury, NEVER use the WARNING NEVER use a length stop on the free end In short, the cutoff WARNING Use caution when starting the cut to prevent CAUTION When using a block as a cutoff gauge, Keep the workpiece an inch or so in front of the blade.

Turn the switch off, allow the blade CAUTION Never touch or hold onto the "free" or "cut off" end of the workpiece. Miter Gauge Operation. To set your miter gauge, loosen the lock handle and move the miter gauge to the desired This is a combination of bevel crosscutting and mitering. Follow the instructions for both bevel Dado Cutting. Bevel Crosscutting. When installing the dado stack, do not Replace it with the outer clamp washer, then install the Since dado cuts are not through cuts, the cuts must be performed with the blade To remove the blade guard assembly, lift guard lock lever When using the dado, the special dado insert also sold as an accessory must be used. Anytime a cut is required that is considerably wider than the saw kerf, a dado is used. A Use EXTREME care when using the dado without the blade guard assembly and Use several successive passes rather than attempting Be sure to place the blade guard assembly and standard throat plate back in position Reinstall blade guard This operation is the same as crosscutting except that the bevel angle is set to an angle Check alignment after each change of bevel angle. WARNING Miter angles greater than 45. CAUTION Certain workpiece shapes, such as molding may not lift the blade guard If the blade guard assembly This operation is the same as crosscutting except the miter gauge is locked at an angle Featherboard Construction. Featherboards are used to keep the work in contact with the fence and table, and help Make the featherboard from a straight piece of wood that is free of knots and cracks. Clamp Always replace the English. Compound Mitering Make sure the featherboard presses only on the portion An accidental startup can cause injury. English WARNING Blowing dust

and chips out of the motor housing using clean, dryDust and chips containingMany householdAlso, do not useNever let any liquid get inside the tool; never immerseLubricationDust Collection.

Your table saw is equipped with a dustAfter extended use, the saw's dustTo clear the dust collection systemRecommended accessories for use with your tool are available at extra cost from your localIf you need assistance in locating any accessory, pleaseWARNING If power is interrupted by a circuit breaker trip, make sure the switch is in the. OFF position before restoring power to prevent the saw from starting unexpectedly. Circuit breaker overload is often the result of a dull blade. Change your blade on a regularCheck your blade before resetting the circuit breakerTo assure product SAFETY and RELIABILITY, repairs, maintenance and adjustmentAlways use identical replacement parts.See To Remove Blade guard assembly. Slide bladeWhile depressing stemPlace the rivingThree Year Limited Warranty. DEWALT will repair, without charge, any defects due to faulty materials or workmanshipThis warranty does not cover part failure dueFor further detail of warranty coverage and warranty repairThis warrantyIn addition to the warranty, DEWALT tools are covered by ourLATIN AMERICA This warranty does not apply to products sold in Latin America. ForFREE WARNING LABEL REPLACEMENT If your warning labels Fig. 46 become illegiblePush Stick Pattern. Adjust length of push stick so hand will clear blade guard and rip fence. Ajuste el largo de las varas de empuje para que laCAUTION Make push stick from plywood orOptional hanging hole. Trou de suspension optionnel. Orificio para colgar opcional.Notch to help prevent hand from slipping. Muesca para prevenir que la mano se resbale. DEWALT Industrial Tool Co., 701 Joppa Road, Baltimore, MD 21286. Please check your inbox, and if you can't find it, check your spam folder to make sure it didnt end up there. Please also check your spam folder. Each tool is produced with painstaking precision using advanced manufacturing systems and intense quality control.

<https://congviendis.vn/vi/bosch-hbl-645-manual>