



File Name: cannondale caadx tiagra manual.pdf

Size: 3578 KB

Type: PDF, ePub, eBook

Category: Book

Uploaded: 17 May 2019, 23:23 PM

Rating: 4.6/5 from 757 votes.

Status: AVAILABLE

Last checked: 15 Minutes ago!

In order to read or download cannondale caadx tiagra manual ebook, you need to create a FREE account.

[Download Now!](#)

eBook includes PDF, ePub and Kindle version

[❑ Register a free 1 month Trial Account.](#)

[❑ Download as many books as you like \(Personal use\)](#)

[❑ Cancel the membership at any time if not satisfied.](#)

[❑ Join Over 80000 Happy Readers](#)

Book Descriptions:

We have made it easy for you to find a PDF Ebooks without any digging. And by having access to our ebooks online or by storing it on your computer, you have convenient answers with cannondale caadx tiagra manual . To get started finding cannondale caadx tiagra manual , you are right to find our website which has a comprehensive collection of manuals listed.

Our library is the biggest of these that have literally hundreds of thousands of different products represented.



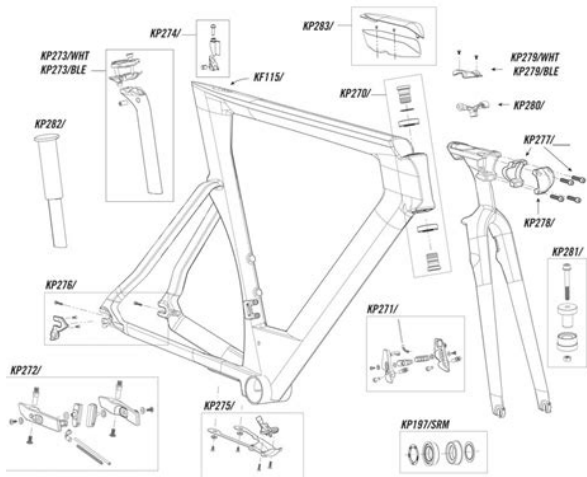
Book Descriptions:

cannondale caadx tiagra manual



Please review our cookie policy to learn more or to change your cookie settings. By continuing to browse, you agree to our use of cookies. Please review our cookie policy to learn more or to change your cookie settings. By continuing to browse, you agree to our use of cookies. These supplements feature indepth specifications including geometry, torque specifications as well as replacement part numbers. We suggest navigating the above link to the respective riding genre and model to see what supplements are available for your model. Submit a request. Would you prefer to shop on our website You previously shopped on our website. Would you like to go to our website now It's a pretty relentless philosophy. But it obviously works, as they're now one of the most popular bike brands in the UK. Whatever style of riding you're into or whatever your budget is, riding Cannondale bikes is a great choice.. Read More If you continue to use our website, we will assume you are happy to receive cookies from us and our partners. Cannondale begins with 6000 series butted and heat treated aluminum. I just ordered the entry level CAADX Tiagra through my shop in the States. Doesn't look like they have the new one up on the Cannondale site yet, comes in dark red this year.Issuu is a digital publishing platform that makes it simple to publish magazines, catalogs, newspapers, books, and more online. Easily share your publications and get them in front of Issuu's. Find great deals on eBay for caadx and cyclocross bike. Shop with confidence. I have had 2 new bikes in the last 6 months, a Cannondale CAADX Tiagra which got returned as the top chain ring snapped whilst riding after 2 weeks, I then upgraded my bike to the CAADX 105, still fitted with the FSA Gossamer Compact set, 10 weeks in during that time I didn't ride for 3 weeks due to a new baby in the house the same issue has. Moved Permanently.<http://www.souz-himki.ru/userfiles/dl2-manual.xml>

- **cannondale caadx tiagra manual, cannondale caadx tiagra size guide, cannondale caadx tiagra manual pdf, cannondale caadx tiagra manual 2017, cannondale caadx tiagra manuals, cannondale caadx tiagra manual 2016.**



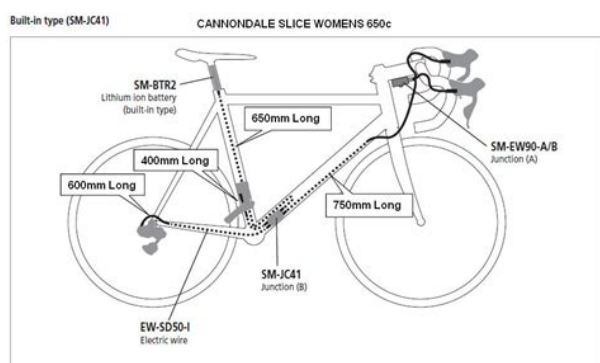
Hyundai getz 2006 user manual pdf Panasonic nn j993 user manual Beretta silver pigeon ii user manual Sony cdp cx235 user manual VideoTiagra user caadx User tiagra cannondale The document has moved here. Buy your Cannondale CAADX Tiagra CX Velo from Triton Cycles. The Cannondale CAADX Tiagra isn't just for racing, and makes for a superb commuter during the week, so enjoy the versatility of this cyclocross bike. I've been using a CaadX as a winter bike since September and love it. All the latest cycles of the season are in stock and ready for delivery. Special conditions in GER 0 % financing and free shipping for orders over. Cannondale CAADX 105 1 customer review on Australia's largest opinion site ProductReview. 0 out of 5 stars for Cannondale CAADX 105 in Road Bikes. Cannondale CAAD 8 Pdf User Manuals. View online or download Cannondale CAAD 8 Owner's Manual. Shop for Cannondale at REI. Top quality, great selection and expert advice. 100% Satisfaction Guarantee. Cannondale reserves the right to make changes to information contained on this site at any time without notice, including with respect to prices, specifications, equipment, models, colors, and materials. GT Bikes Gt Grade Al Tiagra All Road Bike Pushing the Boundaries of Road. Never before has a high tech road bike been so capable on low tech roads. The Grade is ready for eve. Find out how much a Cannondale CAADX 6 bicycle is worth. Cannondale CAADX 6 Tiagra with 9 speed SLX RD to run 11 32T cassette and Stan's Alpha 400 rims and tubeless and Some Burton snowboard setups, one with stiff ol Camber and one with Rocker Camber Rocker. I am the original owner, and only modifications have been to the pedals the originals developed a creak, so I replaced with the lurid green pedals shown. Shop the Cannondale CAADX Tiagra Cyclocross Bike online at Sigma Sports. Receive FREE UK delivery and returns on all orders over 30! <http://analogsys.com/uploaded/21416313765f695971493f9.xml>



Cannondale CAADX Tiagra Cyclo cross bike costing is a great looking do everything bike Find this Pin and more on Outdoor stuff by Rob. Cannondale CAADX Tiagra Cyclo cross bike costing 999 is a great looking do everything bike. Cannondale CAADX Tiagra Disc for. I am now looking at a used CAADX Tiagra Disc. Use of this site constitutes acceptance of our User Agreement and. I like to

imagine that Cannondale's bike designers have a thousand page manual of rules on how to design a bike. And that each time they develop a new bike they. High end cross racing capabilities and all in one versatility make the CAADX, an all round adventure machine. Cannondale's CAADX Cyclocross Bike uses a balanced and aggressive position for. Max 5 Reviews per user are. Not just great for racing, a bike that can be used for rough commutes or weekend. Everything you need to know about the Cannondale CAADX Tiagra SE View Reviews, Specifications, Prices, Comparisons and Local Bike Shops. Top quality, great selection and expert advice you can trust. Cannondale CAADX Tiagra. We may also use non personal information to compile tracking information reports regarding Site user. Cannondale was one of the pioneers of oversized aluminium bike frames. Its CAAD 10 can trace its evolution directly back to the first ever oversized alloy frames ever by a top level pro team. Cannondale even gives you the option of disc brakes and just in case you change your mind after your purchase, the non disc model has braze ons to accommodate and upgrade nice touch when an OEM helps make an up sale for the local shop. Whatever you do, I d recommend a 105 groupset it s definitely in your price range and is a huge step up from tiagra, and as I said the model fits the new standard 11 speed rear cassette tiagra is still 10. Off Road, Pavement Michael Svendsen July 08, SuperX, Cannondale, CAADX, CAADX SE, SuperX SE, Columbia. Shimano Tiagra STI Dual. Cannondale even gives you the option of disc brakes and just in.

The owner s manual on my new bike with the new Shimano Claris, not the old one with Octalink asks me to do this After the first 20 km tighten the crankset and also tighten the pedals in the. Cannondale CAADX Tiagra Cyclocross Bike. Cannondale CAADX 105. Cannondale caadx 105 cannondale caadx 105. Read it s strength, weaknesses, find deals and pricing roadbikereview. Cannondale Bikes is an American company founded in 1971. Panasonic quintrix tv user manual They are recognised globally for their innovation and the quality of their bikes. From touring bikes to mountain bikes, a Cannondale is a solid investment that will last for years. When we reviewed the Cannondale CAAD10 Racing Edition in issue six of Bikes Etc, we were blown away by its low weight, incredible power delivery and excellent spec. Cannondale Caadx 56cm cyclocross bike in excellent condition. It's also a perfect pit bike for new SuperX owners. OutFront Steering Geometry offers drama-free stability on technical courses and potholed streets but maintains quickhandling agility everywhere else. SmartForm C2 Alloy Construction and CAAD12-inspired tube shapes keep it light and easy to shoulder, while SAVE micro-suspension helps you track smoothly through the rough stuff. Subtle rack mounts, a removable seat stay fender mount and hidden fork fender mounts expand its usability without affecting its racy looks. A tough 2x10 Shimano Tiagra drivetrain gives you solid shifting, while the Promax cable-actuated disc brakes keep you in control whether you're on a muddy cross course, a wet commute, or loose gravel roads. The all-terrain WTB ST i19 wheels and 37mm tubeless-ready Riddler tires are just as versatile as ready-for-adventure. Email Address Do Not Input Trek Superstore Facebook Trek Superstore Instagram. From heavy hitting Full Suspension Enduro Bikes to KOM chasing Road Bikes and Balance Bikes to freedom inspiring eBikes, we love all things bike and are passionate about helping you find the perfect bike.



<https://skazkina.com/ru/4-speed-manual-cars>

Pay4Later is licensed by The Office of Fair Trading Consumer Credit Licence 0616240. For more information please refer to our frequently asked questions or visit. Secure Trust Bank is authorised and regulated by the Financial Services Authority, licensed by the Office of Fair Trading and a member of the Finance and Leasing Association. For more information please visit. Try using Search to find similar products. Featuring the SAVE technology that adds compliance for comfort to the frame, seatpost and full carbon fibre fork. With rack and mudguard mounts the CAADX is the ultimate all weather, all terrain commuter. A Bike Fit can help you achieve the most comfortable and efficient riding position. Choose a bike, hire it for an agreed length of time from your employer using pretax salary sacrifice meaning you pay less tax and then snap it up for a fraction of its value at the end of the period. This can be beneficial for both the company and the employees by streamlining the process for the HR department and enabling the employees to avoid paying any commission. If you'd like to know more about this please get in touch. We provide an easy to follow stepbystep instruction sheet to help you along the way. We are happy to advise over the phone, but if you are unsure, we would always recommend having your bike assembled by a professional. During very busy periods there may be a 12 delay on dispatch but we'll make this clear straight away. We therefore strongly recommend that you advise us of a favoured delivery day, ask the courier to leave your package with a trusted neighbour, or collect it from a local delivery depot. We can hold dispatch for a day that suits you if you can work from home, or you have a family member who can be home on a particular day for example but we are unable to change the delivery address. If you cannot decide, please contact us and we can assist, but don't ride it before doing so. Bikes must be returned in a securely packaged bike box.

<https://dhomerotravel.com/images/brother-p-touch-1000-user-manual.pdf>



Once goods have been used it will be considered an acknowledgement that you are happy. Please also ensure you have removed any personal items or upgrades before returning the item. Signing for items that have clearly been damaged by the courier is the responsibility of the receiver. Give us a call on 01362 690 953 Registered Office One Arleston Way, Solihull, B90 4LH. Secure Trust Bank Plc is authorised by the Prudential Regulation Authority and regulated by the Financial Conduct Authority and the Prudential Regulation Authority with registration number 204550. For more information please visit www.v12retailfinance.com Actual Finance Application is Completed During Checkout. They are for indication purposes only and can change at any time without notice. Whenever we get updated information from our suppliers we will endeavour to update the Estimated Delivery Dates provided on product pages. Featuring the SAVE technology that adds compliance for comfort to the frame, seatpost and full carbon fibre fork. With rack and mudguard mounts the CAADX is the ultimate all weather, all terrain commuter. Please upgrade your browser to improve your experience. Buy mountain bikes, road bikes and cycle clothing. Buy mountain bikes, road bikes

and cycle clothing. 3 years 14.9% Finance available on all bikes. You might be interested in Pedals Protection Lights Accessories Security Clothing Description Finance Details HOW TO BUILD YOUR MAIL ORDER BIKE Mail Order Bikes Aftercare Reviews Size Guide Availability Returns Product Description CROSS, FUNCTIONAL A supremely versatile bike, the CAADX cyclocross bikes demonstrate their racing heritage with CAAD10 AND SuperX inspired tube shapes, SAVE stays and racebred geometry while rack and fender mounts and a slightly more upright position expand its usability. RIDER PROFILE With its mix of high performance and durability CAADX is perfect for cyclocross racers, fast commuters, winter training, or general roughroad riding.

<https://diatecgroup.com/images/brother-p-touch-1700-manual.pdf>



Home Delivery by Experts All Terrain Cycles are now offering a Home Delivery service. Our Cytech qualified mechanics will first make sure that your bike is fully checked and ready to ride. Then we will deliver it completely assembled direct to your home or place of work where we will set up your bike for your personal needs and answer any questions you may have. All for just 50.00. Our delivery map indicates a general area, however, if you do not see your location on the map please call us on 01274 588488 to discuss a special delivery. HOW TO BUILD YOUR MAIL ORDER BIKE Aftercare After the first few weeks of use, the whole bike will settle down. As a result, the gears may need tweaking, some nuts and bolts may need tightening and you may well need to check the adjustment of the saddle and handlebars. CABLE STRETCH Gears Cable stretch tends to occur shortly after a new bike has been ridden a few times. A rear derailleur that we have tuned to hit every gear, nicely and quietly, may now not be making each shift causing a sensation and sound of “being in between gears”. Generally you may have to shift up, or shift down a couple times to quiet it down and settle the derailleur into a “happy gear”. A front derailleur may no longer want to shift all the way onto the big ring or will require a much firmer push to get it there. It is advisable to get the cable tension adjusted as soon as this happens either by your local bike shop. This tune up is considered a necessary part of any bicycles maintenance schedule and as such should not be ignored. Brakes Your brakes will also be affected by cable stretch provided of course that they are NOT hydraulic in which case this does not apply. The symptom here is that they usually start to feel quite loose. i.e. you have to pull the lever much further back or harder in order to get the same stopping power you once had. This is partly why new bikes come with a first free service.

If your brakes start feeling a little spongy after a few weeks, you can adjust them at the barrel or the clamp or ask a mechanic at your local bike shop to do it for you. DISC BRAKES New disc brakes won’t deliver their full power until the rotor and pads have bedded in. SRAM has a really good guide for bedding in disc brakes “Accelerate the bike to a moderate speed and then firmly applying the brakes until you are at walking speed. Repeat this process 20 times. Then accelerate the bike to a faster speed and apply the brakes until you are at walking speed. Repeat this process ten times. It’s

important that during this process you never come to a complete stop or lock up the wheels at any point.” Doing this process should drastically improve the performance of your brakes and prepare them for many happy rides. **CRANKS** Check the cranks and crank bolts or nut for tightness; grab a crank arm in each hand and try to wiggle them to check for looseness. If there is play in the cranks, the nuts or bolts may need to be tightened. Cranks should be checked after every ride for the first week. **HEADSET** A loose headset can be diagnosed by turning the front wheel to point left or right, holding the front brake on, and then rocking the bike backwards and forwards. Hold your fingers between the stem and the frame. Any movement indicates that you need to tighten the headset. **SADDLE** Check your seat post is not loose and that you have not exceeded the limit marked on the seat post. Once you have checked these, use an allen key to tighten the seat post clamp. Check the seat is secure by giving it another check once you have finished. **STEM** Check that your front wheel and stem do not move independently, and that your handlebar clamp bolts are tight. Perform this check by standing in front of the bike, holding the front wheel between your knees, and twisting the handlebars. You can prevent any movement by tightening the stem bolts and the handlebar clamp with an allen key.

<https://laneopx.com/wp-content/plugins/formcraft/file-upload/server/content/files/16270b30c8705c---boston-subsat-6-manual.pdf>

SUSPENSION FORKS Keeping your mountain bike’s suspension maintained is one of the best ways to ensure you’re getting all the performance you can out of your bike. Plus, giving your fork and shock a few seconds of attention here and there can prevent costly repairs or even replacements. Dirt is the number one enemy of suspension. After every ride make sure to wipe the seal area and stanchions of your fork and shock. Wipe in a horizontal motion, not vertical as you don’t want to force any debris towards the seals. Every few rides double check that your suspension sag is correct, as well as your rebound and compression adjustments. If something has changed, or the adjustments aren’t working as before, some maintenance is likely due. Working on your bike at home can seem daunting, and we always recommend you take your bike to a qualified mechanic if possible. Our mechanic will also complete a rigorous PreDelivery Inspection PDI before carefully repacking for shipping to you; but in order to fit the bike back into its box for delivery, some disassembly has to be done. Reassembly of these parts should be straightforward and should not take very long. **Tools Youll Need** A multitool or a 4mm or 5mm Allen key, a pedal wrench or 15mm Allen key, depending on your pedals and a pair of scissors to open the box and cut the zipties with. **1. Open the Box and Remove Your Bike** Carefully remove your bike from the box and remove all of the packaging and zip ties with your scissors or snips. Never use a sharp knife as this can easily result in damage to paintwork and tyre sidewalls. Pedals and quick release if supplied will be in a small box at the bottom of your package as well as an instruction manual for your specific bike. Make sure you keep hold of this as it contains your bikes serial number. **2. Secure Your Front Wheel** Bikes will be delivered with the rear wheel already fitted so all you have to do is slide in the front wheel.

First, remove the plastic fork spacer, along with any other packing material. Set the frame upright on the ground and attach the wheel. Make sure that the brake is properly aligned and that the wheel is sitting straight. Next, tighten the quick release skewer if supplied and make sure that the brake quick release is tightened. **3. Attach the Handlebars** Using a multitool or a 4 or 5mm Allen key, clamp the faceplate over the bars so that they are fastened securely but not so tight that you cannot change the angle of the bars. Note many models of handlebar have handy measurement markers, allowing you to find your perfect angle. **4. Fit Your Pedals** It is important to note that pedal threads are different from left side and right side. The right side pedal has a righthand thread removes anticlockwise, installs clockwise. The left side pedal has a lefthand thread removes clockwise, installs anticlockwise. We will label the pedals with “left and right” stickers in order to make sure you refit them correctly. The pedals will have grease applied to the threads, do not wipe this off.

Follow the direction arrows on the stickers to ensure the pedal threads engage correctly then tighten them with a 15mm pedal wrench or Allen key where applicable. 5. Fit Your Saddle The seatpost has already been greased so all you have to do is slide the post into the frame at your desired height and tighten the seat clamp using your multitool. 6. Final Checks Finally give your bike a final check over to ensure your handlebars and seat post clamp are tightened securely, and also that your brakes quick releases are in the closed position. Please also read our aftercare recommendations. Want to ask us a question about this product. Just fill in the form below and we will get back to you as soon as we can. Leaving a review can be helpful to us and to other customers. If you would like to leave a review please fill in the form below.

Upon placing an online order we will notify you if we are unable to fulfil your order within 15 working days. We do not charge your credit or debit card until we dispatch your order, unless by prior agreement or as a holding deposit for special purchase items. Our mail Order Customer service is open Monday to Friday 8am to 5.30pm If you are visiting one of our stores and interested in a specific item, please ring us on 01274 588 488 to check that it is available at the store you are visiting before making a special trip. This telephone number is manned 7 days a week in line with our shop opening hours. Returns Goods must be returned within 30 days of receipt. Returned goods must be unused, in a saleable condition and in their original packaging with all labels still attached. Goods must not be fitted or used. All Goods must be accompanied with a Completed Returns Form. Goods can be returned to the Store for a refund or exchange. A Completed Returns form must accompany all goods returned to the store; the refund however will be processed by the Mail Order Customer Service Staff and not by the Store Staff so the refund may not be immediate. How about Liege Bastogne Liege. By continuing to use our site, you are agreeing to the use of Cookies as set in our Cookie Policy Accept. Its CAADX aluminum frame offers low weight and incredible efficiency, while the SAVE stays and carbon fork create a smooth ride. Sturdy Maddux wheels are ready for whatever the road ahead has in store. Promax Render mechanical disc brakes provide great stopping power, even in wet, sloppy conditions, while the Schwalbe cross tires hook up on everything from pavement to grass to gravel. Topped off with highquality components and saddle from Cannondale, this bike has comfort and performance to spare. Find more newsletters on our newsletter signup page. Magazine The recall, which affects model years 2013 through 2016, comes after 11 reported incidents of the front fork breaking.

According to the Consumer Product Safety Commission, seven of those incidents involved serious physical harm, including concussions and spinal injury. One resulted in the death of the rider. Bikes that have all of those attributes warrant inspection. Components suffering from stress fatigue can fail suddenly and catastrophically, causing loss of control, serious injury, or death.” However, a brand representative explained to Outside that the replacement forks an updated component that’s lighter weight and supposedly higher performing than the original have undergone extensive testing internally by “a leading thirdparty bicycle testing laboratory,” and have CPSC approval. In recent years, Outside Online has reported on groundbreaking research linking time in nature to improved mental and physical health, and we’ve kept you informed about the unprecedented threats to America’s public lands. Our rigorous coverage helps spark important debates about wellness and travel and adventure, and it provides readers an accessible gateway to new outdoor passions. Time outside is essential—and we can help you make the most of it. Making a financial contribution to Outside Online only takes a few minutes and will ensure we can continue supplying the trailblazing, informative journalism that readers like you depend on. We hope you’ll support us. Thank you. Subscribe for indepth reviews, first impressions, industry news, and pro DIY tips. Any item including bikes but with the exception of food can be returned to us for any reason provided it is received by us in an unused condition in or with its original packaging. If you decide to purchase the bike, the balance you owe will be based on a percentage of how much the bike was worth at the time you took out the Cycle To Work scheme. For full instructions on how youre bike will arrive and what

you'll need to do, visit our [How Our Bikes Are Built](#) page. Please note pedals are not included with all bikes so please check the specification.

You can shop our awesome range of pedals [HERE](#). Once you add the bike to cart you will be taken to the pedal selection page to add your half-price pedals, discount will be applied at the checkout.

Registered Office One Arlestone Way, Solihull, B90 4LH. Secure Trust Bank Plc is authorised by the Prudential Regulation Authority and regulated by the Financial Conduct Authority and the Prudential Regulation Authority with registration number 204550. For more information please visit www.v12retailfinance.com. Actual Finance Application is Completed During Checkout. They are for indication purposes only and can change at any time without notice. Whenever we get updated information from our suppliers we will endeavour to update the Estimated Delivery Dates provided on product pages.

With the unflappable Shimano Tiagra drivetrain, and powerful Promax mechanical disc brakes at your disposal, you'll be primed to conquer course or commute with equal ease. Tough CX 3.0 rims, Schwalbe tires, and Cannondale components are on hand to ensure the CAADX is battleready, whether you're in the weekend racing fray, or zipping to work on a weekday morning.

Brakes Mechanical Disc Report incorrect bike information Where to Buy Gearing 2 10 — 20 speed 2020 Cannondale CAADX Tiagra 33 mph Similar Bikes 35 mph The CAADX Tiagra is easier to ride up hills than similar bikes. Add custom gearing Learn more about bike gearing Estimated Spec Level Estimated spec level of the CAADX Tiagra compared to other cyclocross bikes. 99 Spokes analyzes the build material and quality level of the frame, fork, wheelset, groupset, suspension system, and more to estimate the overall spec level of each bike. Love data Subscribe for updates. It's not only made for racing, however. For commuting purposes, it could be the ultimate bike. The versatile handling and robust parts make the CAADX ideal for taking on rough city streets as well as backcountry adventures. We review the CAADX model range, showing the highlights.

As a winter bike, there's little else you could wish for, especially when the weather turns. With reasonable price points and fantastic value for money, the Cannondale CAADX range makes for an attractive do-it-all dropbar bike. CAAD stands for Cannondale Advanced Aluminium Design, and packs in high-end production techniques into its construction. Double pass welding allows for a stronger and smoother join between tubes. It also gives Cannondale the opportunity to manipulate the shapes of the tubes to suit the handling characteristics. All frames get neat internal routing, keeping your cables from getting in the way, as well as two water bottle mounts. Both models in the range feature carbon bladed forks, complete with internal routing, completing the clean look. To make it easy, Cannondale has named their models based on the groupset they get, so the CAADX Tiagra entry-level bike gets a 2x10 speed Tiagra groupset with mechanical disc brakes, they deliver smooth power in all weather and keep maintenance simple with cable actuation. The road sized 700c wheels are fast rolling, keeping their speed well. Cannondale's CX 2.0 rims are matched to Formula hubs giving a light weight and strength. Its main purpose is to race in the demanding cyclocross discipline, but it is also happy doubling as your everyday workhorse. The lightweight alloy frame gets comfortable geometry, making it great for both racing as well as hitting city streets. Every model gets a parts spec that is capable from the off and comes at a very competitive price point too. If a more premium build is what you're after, then the carbon-framed Cannondale SuperX is worth a look. All Rights Reserved Terms and Conditions apply. Performance Cycling Limited acts as a broker and offers credit from PayPal Credit. We also share information about your use of our site with our social media, View our cookies policy to find out more.

<https://formations.fondationmironroyer.com/en/node/8957>