

File Name: canon s2 is owners manual.pdf

Size: 1808 KB

Type: PDF, ePub, eBook

Category: Book

Uploaded: 27 May 2019, 13:51 PM

Rating: 4.6/5 from 700 votes.

Status: AVAILABLE

Last checked: 12 Minutes ago!

In order to read or download canon s2 is owners manual ebook, you need to create a FREE account.

[Download Now!](#)

eBook includes PDF, ePub and Kindle version

[Register a free 1 month Trial Account.](#)

[Download as many books as you like \(Personal use\)](#)

[Cancel the membership at any time if not satisfied.](#)

[Join Over 80000 Happy Readers](#)

Book Descriptions:

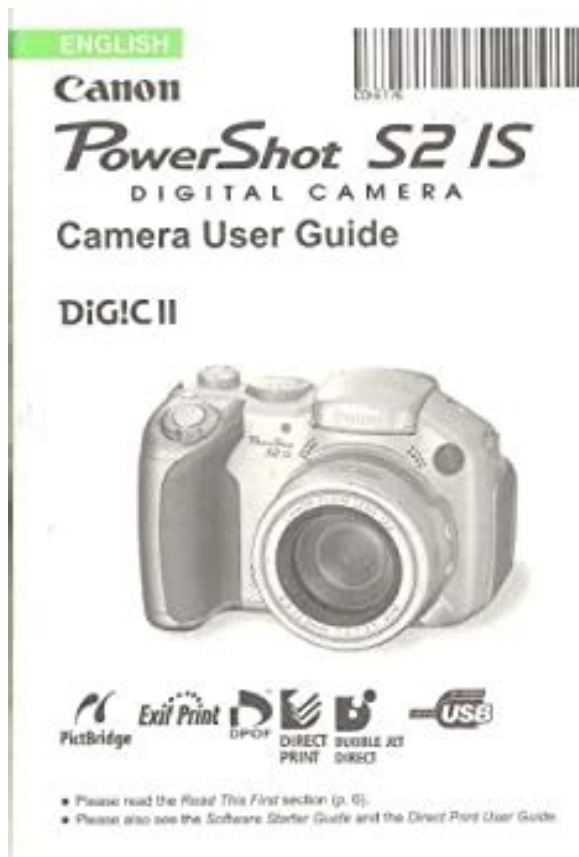
We have made it easy for you to find a PDF Ebooks without any digging. And by having access to our ebooks online or by storing it on your computer, you have convenient answers with canon s2 is owners manual . To get started finding canon s2 is owners manual , you are right to find our website which has a comprehensive collection of manuals listed.

Our library is the biggest of these that have literally hundreds of thousands of different products represented.



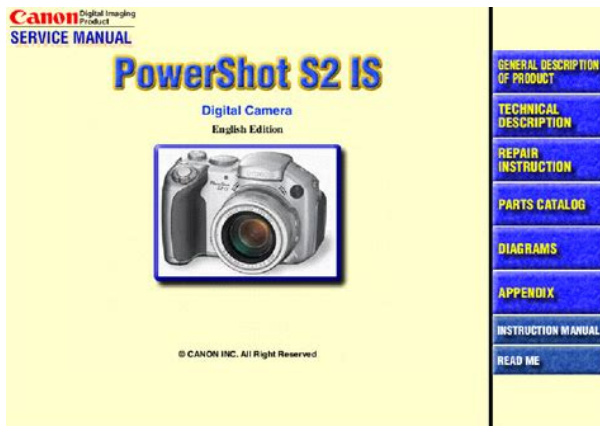
Book Descriptions:

canon s2 is owners manual

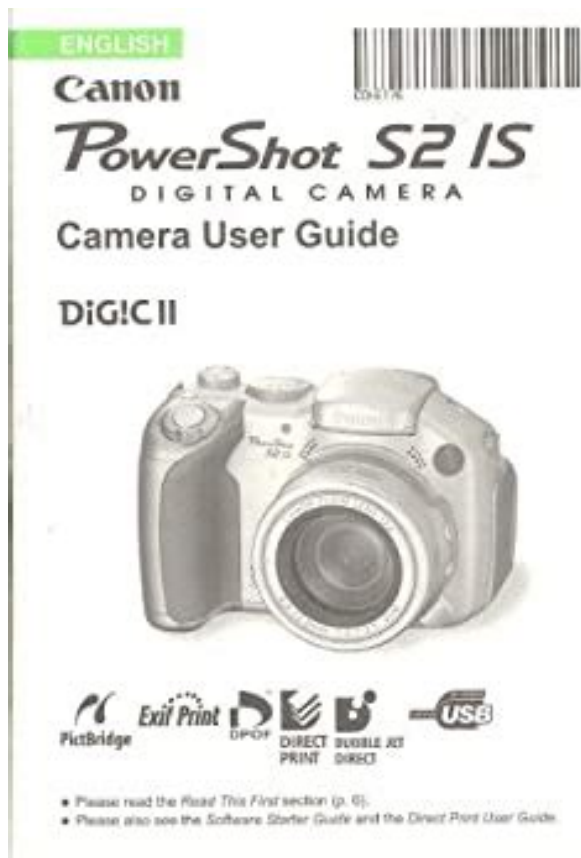


When it has completed, the PDF file will open. Note Please use Adobe Reader 6.0 or later to browse this PDF file. You may download and use the Content solely for your personal, noncommercial use and at your own risks. Canon shall not be held liable for any damages whatsoever in connection with the Content, including, without limitation, indirect, consequential, exemplary or incidental damages. You shall also not and shall not let others reproduce, modify, reformat or create derivative works from the Content, in whole or in part. This page requires Javascript. Modify your browsers settings to allow Javascript to execute. See your browsers documentation for specific instructions. To install your download click on the name of the downloaded file. Access your account, or create a new account, click here to get started. Figures for Movie Mode represent total capacity of SD memory card. Direct connection to Canon CP Printers and PIXMA Photo Printers via cameras USB cable no computer required or PictBridge compatible printers. Use flash every two shots. Turn camera off and on after every ten shots. LCD brightness setting by Factory default. Recommended Software File Name Date File Size Optional Software File Name Date File Size Recommended Manuals File Name Date File Size Optional Manuals File Name Date File Size The Product purchased with this limited warranty is the only PowerShot Digital Camera to which this limited warranty applies. Warranty exchange or replacement does not extend the original warranty period of the Product. The sole warranty, if any, with the respect to such nonCanon brand items is given by the manufacturer or producer thereof. This limited warranty covers all defects encountered in normal use of the Products, and does not apply in the following cases A Canon Customer Care representative will attempt to diagnose the nature of the problem and correct it over the telephone. <https://www.thesourcebookonline.com/helpfiles/dv2150-manual.xml>

- canon powershot s2 is service manual, canon powershot s2 is user manual, 1.0, canon powershot s2 is service manual, canon powershot s2 is user manual.



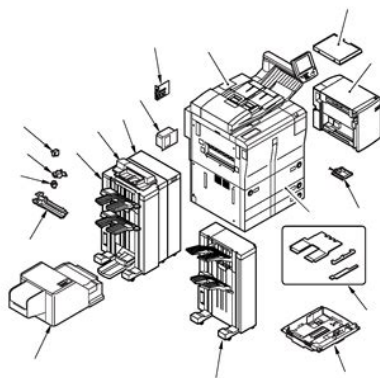
If the problem cannot be corrected over the telephone, you will be asked to follow the applicable procedures for MAILIN SERVICE. Note that a dated proof of purchase is required at the time of service. MAILIN SERVICE is a program under which your Product is repaired by a Canon U.S.A. or a Canon Canada authorized service center for the Product. You will be given the name, address and phone number of an authorized service center. It is your responsibility to properly package and send the defective Product, together with a copy of your dated proof of purchase, a complete explanation of the problem and a return address to the authorized service center at your expense. Do not include any other items with the defective Product. The Product covered by this limited warranty and proven to be defective upon inspection will be repaired and returned to you without charge by the authorized service center. Any Product received by the authorized service center that is not covered by the limited warranty will be returned unrepaired, or at the discretion of the authorized service center, you may receive a written estimate of repair at such cost as the service center may establish from time to time. Scroll down to easily select items to add to your shopping cart for a faster, easier checkout. Visit the Canon Online Store For use with most EF lenses and PowerShot cameras. Requires Conversion Lens Adapter which is specific to camera model. Also compatible with the S80, S2 IS, S1 IS. Effectively doubles the flash range of the camera. Comes with mounting bracket. The cable connects to your camera and to the USB port on your PC or MAC Computer. Comes standard with the EOS 1Ds Mark III, 1D Mark IV, 1D Mark III, 1Ds Mark II, 1D Mark II N, 1D Mark II, 5D Mark II, 7D, 5D, 50D, 40D, 30D, 20D, 10D, Digital Rebel XTi, Digital Rebel XT and Digital Rebel. Please see Compatibility tab for compatible models. The strap is lightly padded and features wide tapered ends for maximum comfort. <http://geulle.com/fckeditor/ckfinder/userfiles/dv2225la-manual.xml>



This product is designed to achieve excellent performance when used with genuine Canon accessories. Components Guide. Operation Panel. Installing the Batteries. Registering Settings to the Shortcut Button. Setting the Auto Rotate Function. Resetting the File Number. Customizing the Camera My Camera Settings. Connecting the Camera to a Computer. Downloading from a Memory Card. Viewing Images on a TV Set. About Printing. There is a risk of high voltage electrical shock. Failure to do so may result in fire or electrical shock. Check that the strap does not come loose from the strap mount when pulled. Perform the same steps on the other side of the camera. Attaching the Lens Cap Fit the lens cap over the lens casing so that it covers the entire lens. Change the batteries. Replace the batteries. The memory card has a write protect tab, Sliding the tab downward. Reformatting the SD card may solve the problem. When a non Canon brand memory card is malfunctioning, reformatting it may solve the problem. Memory cards formatted. You may use multi media cards with this camera. However, Canon makes no warranties. This operation cannot be performed during movie playback, in the jump search mode p. 46 or while connected to a separately sold printer. Also, closing LCD monitor causes the viewfinder to display. Shooting Mode Press the DISP. Always keep the LCD monitor closed to protect it when the camera is not in use. If the surroundings are too bright for example, when you are shooting outdoors When digital zoom is enabled, the zoom value is displayed in blue. If the exposure requires adjustment, set the exposure compensation p. You can perform the following while an image is displayed stitch assist is not available. Display the image information p. 27. Display the magnified image p. 43. Erase individual images p. Flash is closed The flash will not fire, Raise the flash manually, shoot. The last recorded image appears on the LCD monitor or viewfinder.

The jump bar will display, View the previous or next nine images using, Sound is also recorded simultaneously. Results may vary depending on the subject. Use this mode to shoot a series of overlapping frames for merging stitching into a large panoramic image using a computer. Please use the bundled PhotoStitch program. Try to keep the vertical misalignment to less than 10% of the image height. Digital zoom is not available. To use a custom white balance setting, first set it in another shooting mode. Macro mode remains active after shooting a photo. Photo Tips and

Information p. 174 Image Area in Macro Mode When the zoom is set between the maximum telephoto and wideangle. When Super Macro mode is enabled, digital zoom is canceled and the zoom is set to maximum wideangle. Recording time will display properly if you format the memory card in this camera excluding slow recording memory formatted in your camera to shoot movies p. While shooting a movie, press shutter button halfway to focus. Press the shutter halfway so the camera can focus and set exposure for the still image. During this process, movie shooting continues. Press shutter button. However unnatural sound can result when used to record in locations with no wind, You can play back recorded movies. See the Direct Print User Guide for details. This icon appears when a printer is connected Play Starts playback of movies and sound Movie Control Panel Slow Playback During slow playback, Playback Sound Level. The preedit data is lost. New File Saves the edited movie under a new file name. The preedit data is left unchanged. Selecting a lower aperture value opening the aperture allows you to blur the background and create a beautiful portrait. A higher aperture value closing. By selecting optimal mode, can shoot a subject with the optimal exposure. Evaluative metering is the default metering mode. The camera divides images into several zones for light metering.

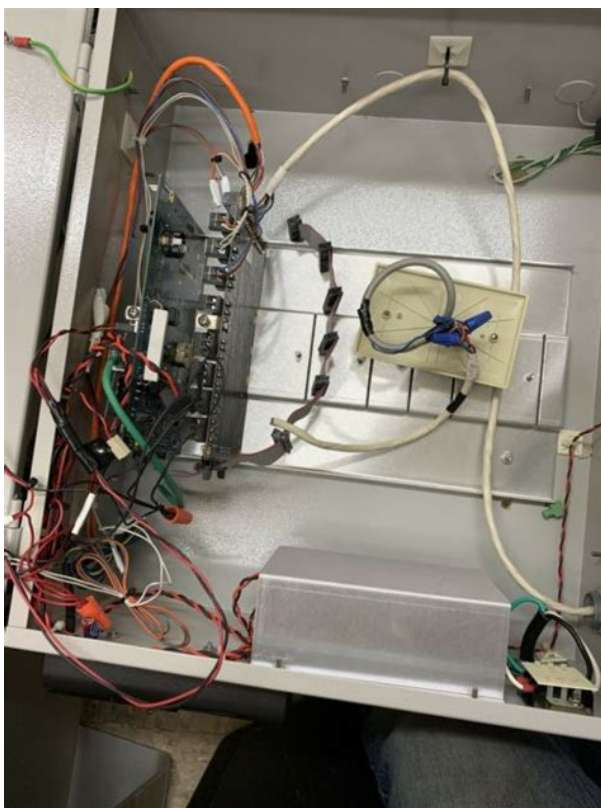


<http://www.raumboerse-luzern.ch/mieten/bosch-shu3306uc-manual>

The camera evaluates complex lighting conditions, such as the Evaluative position of the. Combinations of setting contents and light source are as follows. Auto Settings are automatically set by the camera DayLight For recording outdoors on a bright day Cloudy For recording under overcast, shady or twilight skies For recording under tungsten and bulb type 3 wavelength fluorescent. If the white balance setting conditions and shooting conditions are not the same, the correct white balance may not be obtained. Effect Off Records normally with this setting. Vivid Emphasizes the contrast and color saturation to record bold colors. Neutral Tones down the contrast and color saturation to record neutral hues. Low Sharpening Records subjects with softened outlines. Use this option to emphasize blue tints. It makes blue subjects, such as the sky or ocean, more vivid, Vivid Blue Use this

option to emphasize green tints, It makes green subjects, such as mountains, new growth, flowers and lawns, more vivid. Vivid Green Use this option to emphasize red tints. See Selecting Menus and Settings p, 73. The colors specified in the color swap mode are retained even if the camera's power is turned off. The nearer and farther focus positions can be set in three steps large, medium and small. Images are shot with the focus position changing in the following order;. This is effective when the contrast is too strong between the subject and background or when a subject is backlit. Focus the AF frame or the spot metering frame on the subject on which you wish to lock the flash exposure setting and press the shutter button halfway,. With the following procedures. 1. Turn the mode dial to P, TV or AV. 2. The flash fires right before the shutter closes, Compared with the 1st curtain, 2nd curtain the flash fires later and this allows you to shoot images in which, for example, a car's lights seem to trail off behind.

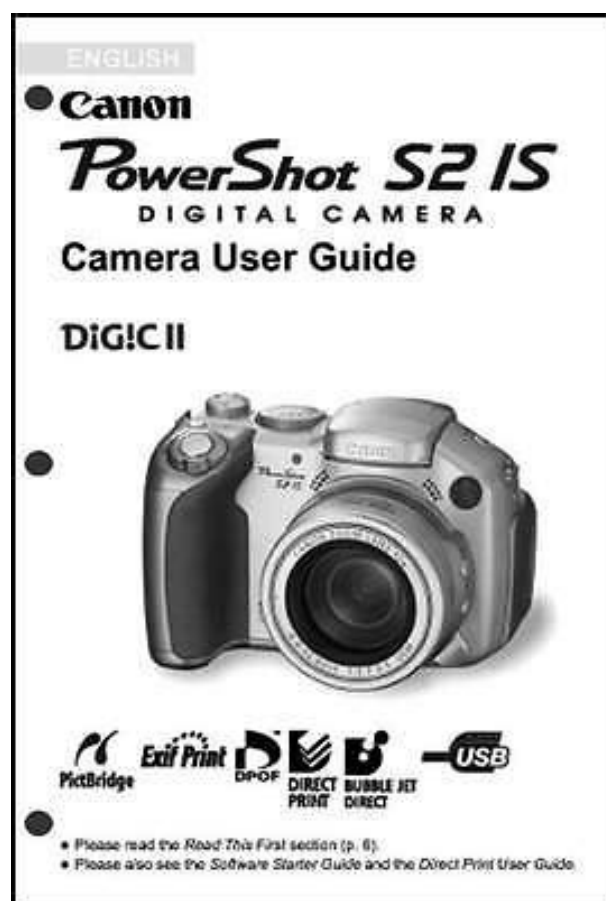
<http://efesup.com/images/c51-keil-manual.pdf>



In addition, the AF lock is convenient because you can let go of the shutter button since the focus stays locked to the same position even after the shot is taken, you can immediately shoot the next image with the same focus position. Continuous The camera is continually focusing on whatever it is aimed even when the shutter button is not pressed, allowing you to shoot without missing opportunities. This is the default setting. When necessary, you can then shoot images with previously saved settings by simply turning the mode dial to C. Settings that are usually forgotten when the shooting mode is changed or when the power is turned off such as Continuous Shooting and Self timer mode are also remembered. See Selecting Menus and Settings p, 73. Use the The sound data is saved in the WAVE format. All Images Play all images on the memory card in order. Slide Show 13 Play the images selected for each show in order p. Depending the power saving setting, the camera power down or the monitor or viewfinder may go off automatically. See Selecting Menus and Settings p, 73. Each menu item has three choices. Recording will start and automatically stop when the time is exceeded. Recording times for each item are as follows Standup Sound 1 sec. Depending on the OS used, some methods may not be available. Please read Computer System Requirements p.

132 in advance. Connect the camera to a computer with the USB cable. With this method, you download images. Macintosh Install the driver bundled software applications from the Canon Digital Camera Solution Disk only the first time, Please see the Software Starter Guide for the installation procedures, Set the auto. Transfers and save to the computer only the images that New Images have not been previously transferred, Transfers and save to the computer only the images with. This is useful for downloading images to a computer which the software is not installed. However, please.

<http://www.dimalcco.com/images/c5180-service-manual.pdf>



This is extremely convenient for sending the images to a photo developing service or for printing on a direct print function compatible printer. A maximum of 998 images can be selected per memory card. See Selecting Menus and Settings p. 73. Use the Please refer to the Direct Print User Guide for the messages that display during a printer connection. Images being recorded to, or read from, memory card. Playback mode is starting. Resetting all the camera and menu settings to default. Note the number and contact your Canon Customer Support Help Desk. If an error code displays directly after taking a picture, Canon NiMH batteries. Or use the Compact Power Adapter. AA size NiMH batteries, See Proper Battery Handling p. 16 The batteries are cold. Press the ring release button and hold it down, turn the ring in the direction of the arrow and remove it. Remove batteries from the camera or charger and store in a dry cool location when not in use. Connect the power cord to the compact power adapter first and then plug the other end into the power outlet, Plug in the power cord firmly. Please replace the battery with a commercially available lithium coin battery CR1220 with the following procedures. Camera Body Gently wipe dirt off the camera body with a soft cloth or eyeglass lens wiper. Subject to change without notice. Even better results can be obtained by placing the camera on a stable. The higher the ISO speed, the higher the sensitivity. A high ISO speed allows you to shoot images in dark indoor or outdoor conditions without a flash and also helps prevent blurred images due to camera shake. Transfer Order. Turning the Power On/Off. Video

System.Viewfinder. 14, 28 Viewing Images on a TV Set. !39 Volume.White Balance. NoteThis equipment has been tested and found to comply with the limits for Class B digital devices, pursuant to Part 15 of the FCC rules. This product is designed to achieve excellent performance when used with genuine Canon accessories.

Please be aware of this and take care when operating the camera for an extended period. About the LCD Monitor and Viewfinder The LCD monitor and viewfinder are produced with extremely high precision manufacturing techniques. If a problem arises while the camera is in use abroad, please convey it back to the country of sale before proceeding with a warranty claim to a Canon Customer Support Help Desk. There is a risk of high voltage electrical shock. Please take the first opportunity to consult your camera distributor or the closest Canon Customer Support Help Desk. Please consult your camera distributor or the closest Canon Customer Support Help Desk. Do not use substances containing alcohol, benzene, thinners or other flammable substances to clean or maintain the equipment. Use of another charger may cause batteries to overheat or deform, posing risk of fire injury and damage to the surroundings. Disconnect the battery charger and compact power adapter from both the camera and the power outlet after recharging and when they are not in use to avoid fire and other hazards. If your camera is used for prolonged periods, the camera body may become warm. Please take care when operating the camera for an extended period as your hands may experience a burning sensation. PictBridge Compliant NonCanon Printers Interface Cable IFC400PCU supplied with the camera Please refer to the System Map or the Direct Print User Guide supplied with the camera for direct print compatible printer information. Check that the strap does not come loose from the strap mount when pulled. Avoid waving the camera about or catching it on other items when suspending it from the strap. Image Zone p. 49 The camera automatically selects settings according to the image composition type. Portrait Landscape Night Scene Special Scene My Colors. If you are using the camera in cold areas or for a long time, we recommend using Canon's AA size NiMH Battery Kit a four piece set.

<https://webhostmurah.com/wp-content/plugins/formcraft/file-upload/server/content/files/16272cc5da13d2---bridge-design-codes-and-manuals.pdf>

Never mix new batteries together with batteries that have been used in other devices. The partially used batteries may leak. Batteries are beginning to run low. Replace or recharge the batteries if you wish to continue using the camera. The batteries are discharged and the camera can no longer operate. Change the batteries. Push as indicated on the back of the memory card slot cover until it clicks into place. Do not touch or allow metal objects to contact the terminals on the back of the memory card. Close the memory card slot cover. To Remove the Memory Card Push in the memory card until you hear it click, then release it. Please note that formatting initializing a memory card erases all data, including protected images and other file types. Turn the power on. Reformatting the SD card may solve the problem. Memory cards formatted in other cameras, computers, or peripheral devices may not operate correctly in this camera. You may use multi media cards with this camera. However, Canon makes no warranties concerning the use of multi media cards. This is convenient when you wish to shoot again after checking or deleting an image immediately after it is shot. Shooting Mode Playback Mode Turn the mode lever to p. Sets the date and time and the date format. Use the button on the omni selector to select the item you wish to set and set its value using the on the omni selector. This operation cannot be performed during movie playback, in the jump search mode p. 46 or while connected to a separately sold printer. Use the button on the omni selector to select. Also, closing the LCD monitor causes the viewfinder to display. Shooting Mode LCD Monitor LCD Monitor Display No Information Information View p. 29 when the LCD monitor is open when the LCD monitor is closed Playback Mode No Information p. Always keep the LCD monitor closed to protect it when the camera is not in use.

Using the Viewfinder If the surroundings are too bright for example, when you are shooting outdoors

and images on the LCD monitor are not clear, use the viewfinder for shooting. A sound file in a format other than the WAVE format is attached or the file format is not recognized. JPEG image with format not conforming to Design rule for Camera File System Standards p. If the exposure requires adjustment, set the exposure compensation p. 90 and reshoot. Set the mode dial to If you are using the LCD monitor, open it. p. 77 Aim the camera at the subject. Use the zoom to achieve the desired composition in the LCD monitor or viewfinder. Two beeps will sound when the camera has finished focusing, and the AF frame appears green. The AF frame will light yellow and the beep will sound one time if the subject is difficult to focus on. Camera shake may not be fully corrected when shooting with slow shutter speeds, such as with evening shots. In this case, affix the camera to a tripod. You can perform the following while an image is displayed stitch assist is not available. Display the images information p. 27. Display the magnified image p. 43. Erase individual images p. Use the button on the omni selector to select the resolution you wish to set, then press the SET button. Mode Dial Flash is open Flash is closed Raise the flash manually, and shoot. Press the button to switch between switching does not apply in some modes. A flashing red insufficient light level. When shooting with a high ISO sensitivity and using the builtin flash, there is more of a chance of overexposure the closer you are to the subject. The last recorded image appears on the LCD monitor or viewfinder. Move between images using the arrow on the omni selector. Movie frames and index playback images cannot be magnified. You can magnify an image while it is displayed on the LCD monitor or viewfinder immediately after the image is shot p. JUMP The display jumps nine images at a time In index playback mode p.

44, press the JUMP button. The jump bar will display. View the previous or next nine images using the omni selector. Jump 10 Images jumps over 10 images at a time Jump 100 Images jumps over 100 images at a time Jump Shot Date jumps to the first image with the next shooting date Jump to Movie. Exercise adequate caution before erasing a file. Use the button to select an image for deletion and press the button. Exercise adequate caution before erasing a file. Landscape Use this mode to shoot spacious landscape scenes. Night Scene Use this mode to capture human subjects against the backdrop of an evening sky or night scene. You can achieve a better blurring effect of the background by making sure the upper half of your subject fills the entire LCD monitor or viewfinder. You can enhance the blurring effect of the background even more by setting the lens to its maximum telephoto setting. The icon of the selected shooting mode appears on the LCD monitor. Shooting procedures are the same as for the Auto Mode p. 33. You can shoot right after selecting an option. Results may vary depending on the subject. Shooting Panoramic Images Stitch Assist Use this mode to shoot a series of overlapping frames for merging stitching into a large panoramic image using a computer. Please use the bundled PhotoStitch program to merge the images on a computer. When composing shots, try to include a distinctive item landmark in the overlapping portions. Compose each frame so that it overlaps 30 50% of the adjoining image. Digital zoom is not available. A custom white balance p. 92 setting cannot be set in Assist mode. To use a custom white balance setting, first set it in another shooting mode. Minor discrepancies in the overlapping portions can be corrected when the images are stitched together. An image can be retaken. Press the button on the omni selector to return to that frame. Macro mode remains active after shooting a photo. Photo Tips and Information p.

174 Image Area in Macro Mode When the zoom is set between the maximum telephoto and wideangle settings, the effective distance from the lens to the subject becomes the same as for the maximum telephoto setting. Pressing the button again cancels the Super Macro mode Macro mode is also canceled. Be careful to avoid damaging the lens when shooting in Super Macro mode. Digital zoom is not available. When Super Macro mode is enabled, digital zoom is canceled and the zoom is set to maximum wideangle. The current setting is displayed. Pressing the button cycles between settings. With the specified number of shots are taken after the specified delay. Selecting Menus and Settings p. 73 These settings are not available when My Colors, Movie is displayed. Images become

coarser the more they are digitally zoomed. If the flash is firing, the interval between shots will lengthen to accommodate the flash's charging requirements. Selecting a Continuous Shooting Method Select either standard or highspeed continuous shooting. The camera beeps once and shooting starts. Sound is recorded simultaneously. When the Movie button is pressed again, the camera beeps twice and shooting stops. The tally lamp blinks red during movie recording and goes off when the recording session is over. On the Macintosh platform, this program is standard with Mac OS X or later. Mode Dial While shooting a movie, press the shutter button halfway to focus. Press the shutter halfway so the camera can focus and set exposure for the still image. Press the FUNC. button. Use the button on the omni selector to select the desired movie resolution and frame rate settings using the button. Even if the recording volume becomes too loud, it automatically adjusts to avoid distortion of loud sounds. Wind filter suppresses noise that occurs in locations with strong wind. However, unnatural sound can result when used to record in locations with no wind. See the Direct Print User Guide for details.

This icon appears when a printer is connected Play Starts playback of movies and sound Slow Playback During slow playback, playback speed can be changed by speeds up and slows down. Overwrite Saves the edited movie with its original name. The preedit data is lost. The preedit data is left unchanged. Button Only in Shooting Mode Some menu options may not be displayed in certain shooting modes. Press the switch between menu tabs. Press the select a menu item. Depending on the function, press the SET or after making a selection. For details, see Registering the My Camera Settings p. 128 or the Software Starter Guide. Camera settings can be reset to the default values p. AF Mode Sets the frequency of autofocus activation. AF Assist Enables AF Assist beam firing during auto focusing, if Beam. Set Shortcut Selects functions to be registered on the button button. Save Settings Saves settings selected in the Rec. Startup Image Sets the startup image when you turn on the camera. Startup Sound Sets the startup sound when you turn on the camera. Operation Sets the sound when the omni selector or any button other Sound. After settings are made, shooting procedures are the same as for See page 184 for settings that can be changed in this mode. How to Use the Mode Dial Check that the camera is in Shooting mode. Please note that camera shake becomes a factor at low shutter speeds and with larger aperture values. If flash warning, in red appears in the LCD monitor or viewfinder, try the following steps to resolve the problem. Adjust the shutter speed with the button so that the aperture value display turns white. The nature of CCD image sensors is such that noise in the recorded image increases at slow shutter speeds. Selecting a lower aperture value opening the aperture allows you to blur the background and create a beautiful portrait. A higher aperture value closing it brings the entire range from foreground to background into focus.

By selecting the optimal mode, you can shoot a subject with the optimal exposure. The camera divides images into several zones for light metering. The camera evaluates complex lighting conditions, such as the Evaluative position of the subject, the brightness, the background, the direct. Combinations of setting contents and light source are as follows. Auto Settings are automatically set by the camera Day Light For recording outdoors on a bright day Cloudy. After taking a custom white balance reading with start shooting. If the white balance setting conditions and shooting conditions are not the same, the correct white balance may not be obtained. Effect Off Records normally with this setting. Vivid Emphasizes the contrast and color saturation to record bold colors. Neutral Tones down the contrast and color saturation to record neutral hues. Sharpness This function allows you to adjust how sharply outlines are defined. Saturation This function allows you to adjust the color depth. It makes blue subjects, such as Vivid Blue the sky or ocean, more vivid. Use this option to emphasize green tints. It makes green subjects, such as Vivid Green as mountains, new growth, flowers and lawns, more vivid. Set the mode dial to Accent from the FUNC. See Shooting in a My Colors Mode p. 95. All colors but the previously specified one display in black and white. See Shooting in a My Colors Mode p. 95. The camera will switch to color input mode and the display will alternate

between the original image and the color swap image. The default color to change is green, which changes to white after setting. The colors specified in the color swap mode are retained even if the camera's power is turned off. Exposure compensation is disabled while enabled. AEB settings can be combined with exposure compensation settings p. 90 to extend the adjustment range. The images are recorded in the following order: Standard exposure, underexposure and overexposure.

The nearer and farther focus positions can be set in three steps: large, medium and small. This is effective when the contrast is too strong between the subject and background or when a subject is backlit. To ensure that the flash is disabled, make sure that it is in the closed position. With the following procedures:

1. Turn the mode dial to 2.
2. Focus on the subject on which you wish to lock the exposure and press the shutter button halfway. The flash prefires to acquire the exposure value required for the subject, appears on the LCD monitor or viewfinder. Each time you press the required intensity for that composition. Recompose the image and shoot. After performing FE lock, pressing anything except the shutter button or the FE Lock is not available while. The flash fires right before the shutter closes. Compared with the 1st curtain, 2nd curtain the flash fires later and this allows you to shoot images in which, for example, a car's lights seem to trail off behind. See *Selecting Menus and Settings* p. 73.

Use the button to select an interval time. The lens stays extended until the next image is shot. Images are not displayed on the LCD monitor or viewfinder right after being shot. A beep sounds and the AF frame turns green. The AF frame is not displayed with the AE setting will also lock when you do this. The exposure may occasionally be incorrect if the difference in intensity between the two items is too great. In addition, since the focus stays locked to the same position even after the shot is taken, you can immediately shoot the next image with the same focus position. Because Stitch Assist does not display the AF frame, aim the camera to focus on the subject. You can change the MF indicator displayed distance units p. 80. Switching between Focus Settings Mode Dial You can switch between focus settings to shoot.

<https://www.thebiketube.com/acros-bosch-shu33a-repair-manual>